

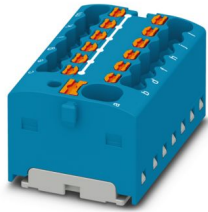
# PTFIX 4/12X1,5 BU - Distribution block



1046962

<https://www.phoenixcontact.com/us/products/1046962>

Please be informed that the data shown in this PDF document is generated from our online catalog. Please find the complete data in the user documentation. Our general terms of use for downloads are valid.



Distribution block, Basic terminal block with supply, nom. voltage: 450 V, nominal current: 17.5 A, number of connections: 13, Load contact, cross section: 0.14 mm<sup>2</sup> - 2.5 mm<sup>2</sup>, Push-in connection, Line contact, Rated cross section: 4 mm<sup>2</sup>, cross section: 0.2 mm<sup>2</sup> - 6 mm<sup>2</sup>, mounting type: for snapping onto a DIN rail adapter, Direct mounting with flange, Free-hanging, color: blue

## Commercial data

|                                      |               |
|--------------------------------------|---------------|
| Item number                          | 1046962       |
| Packing unit                         | 20 pc         |
| Minimum order quantity               | 20 pc         |
| Sales key                            | BE09          |
| Product key                          | BEA123        |
| GTIN                                 | 4055626668871 |
| Weight per piece (including packing) | 13.325 g      |
| Weight per piece (excluding packing) | 13 g          |
| Customs tariff number                | 85369010      |
| Country of origin                    | PL            |

# PTFIX 4/12X1,5 BU - Distribution block



1046962

<https://www.phoenixcontact.com/us/products/1046962>

## Technical data

### Notes

#### General

|      |  |
|------|--|
| Note | The maximum load current of a single clamping unit must not be exceeded.   |
|      | For power distribution applications, IEC 60364-4-43:2008; modified + corrigendum Okt. 2008 (DIN VDE 0100-430:2010-10) section 433.2 ff must be observed! |

### Product properties

|                       |                            |
|-----------------------|----------------------------|
| Product type          | Distributor terminal block |
| Number of connections | 13                         |
| Number of rows        | 1                          |

#### Insulation characteristics

|                      |     |
|----------------------|-----|
| Overvoltage category | III |
| Degree of pollution  | 3   |

### Electrical properties

|   |        |
|---|--------|
| Rated surge voltage                             | 6 kV   |
| Maximum power dissipation for nominal condition | 0.56 W |

### Connection data

|                                 |                     |
|---------------------------------|---------------------|
| Service Entrance                | yes                 |
| Number of connections per level | 13                  |
| Nominal cross section           | 1.5 mm <sup>2</sup> |
| Rated cross section AWG         | 14                  |

#### Load contact

|   |   |
|---|---|
| Stripping length  | 8 mm ... 10 mm  |
| Internal cylindrical gage   | A3  |
| Connection in acc. with standard                                  | IEC 60998-2-2   |
| Conductor cross-section rigid                                     | 0.14 mm <sup>2</sup> ... 2.5 mm <sup>2</sup>              |
| Cross section AWG   | 26 ... 14 (converted acc. to IEC)                         |
| Conductor cross-section flexible                                  | 0.14 mm <sup>2</sup> ... 2.5 mm <sup>2</sup>              |
| Conductor cross-section, flexible [AWG]                           | 26 ... 14 (converted acc. to IEC)                         |
| Conductor cross-section flexible (ferrule without plastic sleeve) | 0.14 mm <sup>2</sup> ... 1.5 mm <sup>2</sup>              |
| Flexible conductor cross-section (ferrule with plastic sleeve)    | 0.14 mm <sup>2</sup> ... 1.5 mm <sup>2</sup>              |
| Nominal current   | 17.5 A  |
| Maximum load current  | 22 A (with a 2.5 mm <sup>2</sup> conductor cross-section) |
| Maximum total current   | 32 A  |
| Nominal voltage   | 450 V   |

#### Line contact

# PTFIX 4/12X1,5 BU - Distribution block



1046962

<https://www.phoenixcontact.com/us/products/1046962>

|   |  |
|---|--|
| Connection method   | Push-in connection                                 |
| Stripping length  | 10 mm ... 12 mm                                    |
| Connection in acc. with standard                                  | IEC 60998-2-2                                      |
| Conductor cross-section rigid                                     | 0.2 mm <sup>2</sup> ... 6 mm <sup>2</sup>          |
| Cross section AWG   | 24 ... 10 (converted acc. to IEC)                  |
| Conductor cross-section flexible                                  | 0.2 mm <sup>2</sup> ... 6 mm <sup>2</sup>          |
| Conductor cross-section, flexible [AWG]                           | 24 ... 10 (converted acc. to IEC)                  |
| Conductor cross-section flexible (ferrule without plastic sleeve) | 0.2 mm <sup>2</sup> ... 4 mm <sup>2</sup>          |
| Flexible conductor cross-section (ferrule with plastic sleeve)    | 0.2 mm <sup>2</sup> ... 4 mm <sup>2</sup>          |
| Nominal cross section   | 4 mm <sup>2</sup>                                  |
| Nominal current   | 41 A   |
| Maximum load current  | 41 A (with 6 mm <sup>2</sup> conductor connection) |
| Maximum total current   | 41 A   |

## Load contact Connection cross sections directly pluggable

|   |  |
|---|--|
| Conductor cross-section rigid                                     | 0.34 mm <sup>2</sup> ... 2.5 mm <sup>2</sup> |
| Conductor cross-section flexible (ferrule without plastic sleeve) | 0.34 mm <sup>2</sup> ... 1.5 mm <sup>2</sup> |
| Flexible conductor cross-section (ferrule with plastic sleeve)    | 0.34 mm <sup>2</sup> ... 1.5 mm <sup>2</sup> |

## Line contact Connection cross sections directly pluggable

|   |  |
|---|--|
| Conductor cross-section rigid                                     | 0.34 mm <sup>2</sup> ... 6 mm <sup>2</sup> |
| Conductor cross-section, rigid [AWG]                              | 24 ... 12 (converted acc. to IEC)          |
| Conductor cross-section flexible                                  | 0.34 mm <sup>2</sup> ... 4 mm <sup>2</sup> |
| Conductor cross-section flexible (ferrule without plastic sleeve) | 0.2 mm <sup>2</sup> ... 4 mm <sup>2</sup>  |
| Flexible conductor cross-section (ferrule with plastic sleeve)    | 0.2 mm <sup>2</sup> ... 4 mm <sup>2</sup>  |

## Dimensions

|        |         |
|--------|---------|
| Width  | 31.4 mm |
| Height | 21.6 mm |
| Depth  | 17.7 mm |

## Material specifications

|   |                 |
|---|-----------------|
| Color   | blue (RAL 5015) |
| Flammability rating according to UL 94                                  | V0              |
| Insulating material group   | I               |
| Insulating material   | PA              |
| Static insulating material application in cold                          | -60 °C          |
| Temperature index of insulation material (DIN EN 60216-1 (VDE 0304-21)) | 125 °C          |
| Relative insulation material temperature index (Elec., UL 746 B)        | 130 °C          |
| Fire protection for rail vehicles (DIN EN 45545-2) R22                  | HL 1 - HL 3     |
| Fire protection for rail vehicles (DIN EN 45545-2) R23                  | HL 1 - HL 3     |
| Fire protection for rail vehicles (DIN EN 45545-2) R24                  | HL 1 - HL 3     |
| Fire protection for rail vehicles (DIN EN 45545-2) R26                  | HL 1 - HL 3     |
| Calorimetric heat release NFPA 130 (ASTM E 1354)                        | 27,5 MJ/kg      |

# PTFIX 4/12X1,5 BU - Distribution block



1046962

<https://www.phoenixcontact.com/us/products/1046962>

|   |        |
|---|--------|
| Surface flammability NFPA 130 (ASTM E 162)              | passed |
| Specific optical density of smoke NFPA 130 (ASTM E 662) | passed |
| Smoke gas toxicity NFPA 130 (SMP 800C)                  | passed |

## Mechanical properties

### Mechanical data

|                 |    |
|-----------------|----|
| Open side panel | No |
|-----------------|----|

## Environmental and real-life conditions

### Needle-flame test

|                  |             |
|------------------|-------------|
| Time of exposure | 30 s        |
| Result           | Test passed |

### Oscillation/broadband noise

|                        |  |
|------------------------|--|
| Specification          | DIN EN 50155 (VDE 0115-200):2018-05            |
| Spectrum               | Long life test category 2, bogie-mounted       |
| Frequency              | $f_1 = 5 \text{ Hz}$ to $f_2 = 250 \text{ Hz}$ |
| ASD level              | $6.12 \text{ (m/s}^2\text{)}^2\text{/Hz}$      |
| Acceleration           | 3.12g  |
| Test duration per axis | 5 h  |
| Test directions        | X-, Y- and Z-axis                              |
| Result                 | Test passed                                    |

### Shocks

|                                |                                     |
|--------------------------------|-------------------------------------|
| Specification                  | DIN EN 50155 (VDE 0115-200):2018-05 |
| Pulse shape                    | Half-sine                           |
| Acceleration                   | 30g                                 |
| Shock duration                 | 18 ms                               |
| Number of shocks per direction | 3                                   |
| Test directions                | X-, Y- and Z-axis (pos. and neg.)   |
| Result                         | Test passed                         |

### Ambient conditions

|  |  |
|--|--|
| Ambient temperature (operation)          | -60 °C ... 110 °C (Operating temperature range incl. self-heating; for max. short-term operating temperature, see RTI Elec.) |
| Ambient temperature (storage/transport)  | -25 °C ... 60 °C (for a short time, not exceeding 24 h, -60 °C to +70 °C)  |
| Ambient temperature (assembly)           | -5 °C ... 70 °C  |
| Ambient temperature (actuation)          | -5 °C ... 70 °C  |
| Permissible humidity (operation)         | 20 % ... 90 %  |
| Permissible humidity (storage/transport) | 30 % ... 70 %  |

## Standards and regulations

|                                  |               |
|----------------------------------|---------------|
| Connection in acc. with standard | IEC 60998-2-2 |
|                                  | IEC 60998-2-2 |

# PTFIX 4/12X1,5 BU - Distribution block



1046962

<https://www.phoenixcontact.com/us/products/1046962>

## Mounting

|               |                                      |
|---------------|--------------------------------------|
| Mounting type | for snapping onto a DIN rail adapter |
|               | Direct mounting with flange          |
|               | Free-hanging                         |

# PTFIX 4/12X1,5 BU - Distribution block

1046962

<https://www.phoenixcontact.com/us/products/1046962>



## Drawings

Circuit diagram



# PTFIX 4/12X1,5 BU - Distribution block



1046962

<https://www.phoenixcontact.com/us/products/1046962>

## Approvals

To download certificates, visit the product detail page: <https://www.phoenixcontact.com/us/products/1046962>

| <b>DNV</b><br>Approval ID: TAE00002TT-05 |                       |                       |                   |                      |
|--|-----------------------|-----------------------|-------------------|----------------------|
|  | Nominal voltage $U_N$ | Nominal current $I_N$ | Cross section AWG | Cross section $mm^2$ |
| keine                                    |                       |                       |                   |                      |
|  | 500 V                 | 24 A                  | -                 | -                    |

| <b>CSA</b><br>Approval ID: 13631 |                       |                       |                   |                      |
|----------------------------------|-----------------------|-----------------------|-------------------|----------------------|
|                                  | Nominal voltage $U_N$ | Nominal current $I_N$ | Cross section AWG | Cross section $mm^2$ |
| <b>B</b>                         |                       |                       |                   |                      |
| Output                           | 300 V                 | 20 A                  | 26 - 12           | -                    |
| Input                            | 300 V                 | 30 A                  | 24 - 10           | -                    |
| <b>C</b>                         |                       |                       |                   |                      |
| Output                           | 150 V                 | 20 A                  | 26 - 12           | -                    |
| Input                            | 150 V                 | 30 A                  | 24 - 10           | -                    |

| <b>IECEE CB Scheme</b><br>Approval ID: DE1-63084 |                       |                       |                   |                      |
|--|-----------------------|-----------------------|-------------------|----------------------|
|  | Nominal voltage $U_N$ | Nominal current $I_N$ | Cross section AWG | Cross section $mm^2$ |
| keine  |                       |                       |                   |                      |
|  | 450 V                 | 32 A                  | -                 | - 4                  |

| <b>EAC</b><br>Approval ID: RU C-DE.BL08.B.00644 |  |  |  |  |
|---|--|--|--|--|
|---|--|--|--|--|

| <b>VDE Zeichengenehmigung</b><br>Approval ID: 40047798 |  |  |  |  |
|--|--|--|--|--|
|--|--|--|--|--|

| <b>cULus Recognized</b><br>Approval ID: E60425 |                       |                       |                   |                      |
|--|-----------------------|-----------------------|-------------------|----------------------|
|  | Nominal voltage $U_N$ | Nominal current $I_N$ | Cross section AWG | Cross section $mm^2$ |
| <b>B</b>                                       |                       |                       |                   |                      |
| Output   | 300 V                 | 20 A                  | 26 - 12           | -                    |
| Input  | 300 V                 | 30 A                  | 24 - 10           | -                    |
| <b>C</b>                                       |                       |                       |                   |                      |
| Output   | 150 V                 | 20 A                  | 26 - 12           | -                    |
| Input  | 150 V                 | 30 A                  | 24 - 10           | -                    |

# PTFIX 4/12X1,5 BU - Distribution block



1046962

<https://www.phoenixcontact.com/us/products/1046962>



**EAC**

Approval ID: KZ7500651131219505

# PTFIX 4/12X1,5 BU - Distribution block



1046962

<https://www.phoenixcontact.com/us/products/1046962>

## Classifications

### ECLASS

|             |          |
|-------------|----------|
| ECLASS-13.0 | 27250118 |
| ECLASS-15.0 | 27250118 |

### ETIM

|           |          |
|-----------|----------|
| ETIM 10.0 | EC000897 |
|-----------|----------|

### UNSPSC

|             |          |
|-------------|----------|
| UNSPSC 21.0 | 39121400 |
|-------------|----------|

# PTFIX 4/12X1,5 BU - Distribution block



1046962

<https://www.phoenixcontact.com/us/products/1046962>

## Environmental product compliance

### EU RoHS

|   |                    |
|---|--------------------|
| Fulfills EU RoHS substance requirements | Yes, No exemptions |
|---|--------------------|

### China RoHS

|  |  |
|--|--|
| Environment friendly use period (EFUP) | EFUP-E                                   |
|  | No hazardous substances above the limits |

### EU REACH SVHC

|                                     |                            |
|-------------------------------------|----------------------------|
| REACH candidate substance (CAS No.) | No substance above 0.1 wt% |
|-------------------------------------|----------------------------|

Phoenix Contact 2026 © - all rights reserved  
<https://www.phoenixcontact.com>

Phoenix Contact USA  
586 Fulling Mill Road  
Middletown, PA 17057, United States  
(+717) 944-1300  
[info@phoenixcon.com](mailto:info@phoenixcon.com)