

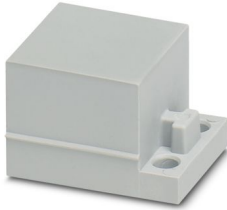
CES-STPG-GY - Blind sleeve



0801715

<https://www.phoenixcontact.com/us/products/0801715>

Please be informed that the data shown in this PDF document is generated from our online catalog. Please find the complete data in the user documentation. Our general terms of use for downloads are valid.



Blind sleeve, small, no. of conductors: 0, type: Blind sleeve, closed, material: SEBS (halogen-free), color: gray, length: 29.5 mm, width: 19.5 mm, height: 17 mm

Product description

Blind sleeves seal feed-through sections that are not required in CES sealing frames

Commercial data

| | |
|--------------------------------------|---------------|
| Item number | 0801715 |
| Packing unit | 10 pc |
| Minimum order quantity | 1 pc |
| Sales key | BF67 |
| Product key | AF7CCX |
| GTIN | 4046356675161 |
| Weight per piece (including packing) | 8.15 g |
| Weight per piece (excluding packing) | 8.15 g |
| Customs tariff number | 40169997 |
| Country of origin | PL |

CES-STPG-GY - Blind sleeve

0801715

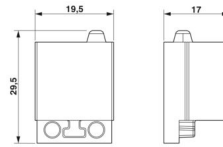
<https://www.phoenixcontact.com/us/products/0801715>

Technical data

Product properties

| | |
|-------------------|--------------|
| Product type | Cable sleeve |
| No. of conductors | 0 |

Dimensions

| | |
|---------------------|--|
| Dimensional drawing |  |
| Width | 19.5 mm |
| Height | 17 mm |
| Length | 29.5 mm |

Material specifications

| | |
|--|---------------------|
| Material | SEBS (halogen-free) |
| Flammability rating according to UL 94 | V0 |

Characteristics

| | |
|-------------------------|--------------|
| Conductor sealing range | Blind sleeve |
| Seal size | small |
| Design, Format | Blind sleeve |
| Design, Cable seal | closed |

Environmental and real-life conditions

Ambient conditions

| | |
|---------------------------------|--|
| Degree of protection | IP54 (Observe the assembly instructions) |
| Ambient temperature (operation) | -40 °C ... 80 °C (static) |

Mounting

| | |
|---------------|--|
| Assembly note | IP54: for vertical sealing frame mounting/for horizontal sealing frame mounting (downward cable outlet direction). |
|---------------|--|

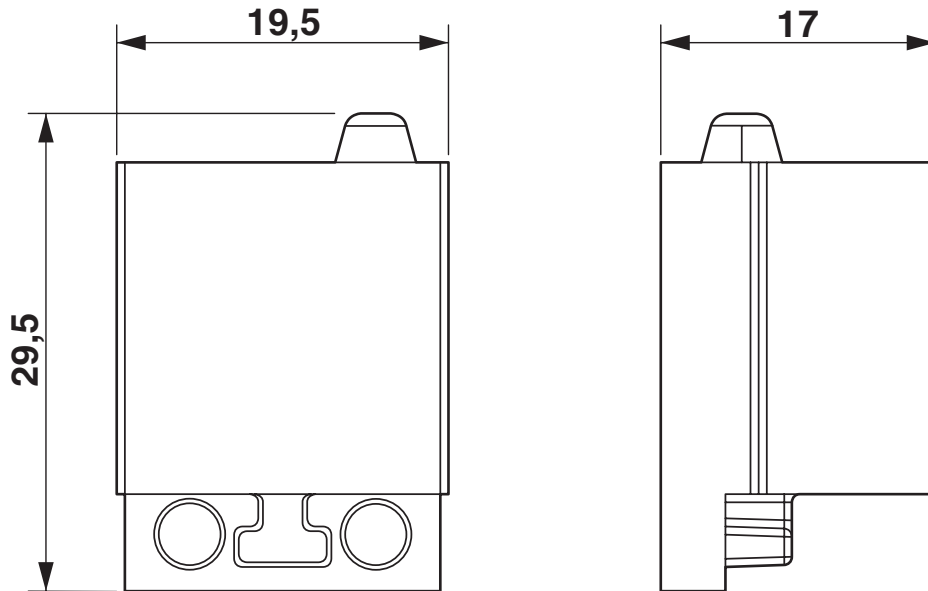
CES-STPG-GY - Blind sleeve

0801715

<https://www.phoenixcontact.com/us/products/0801715>

Drawings

Dimensional drawing



Dimensional drawing

CES-STPG-GY - Blind sleeve



0801715

<https://www.phoenixcontact.com/us/products/0801715>

Approvals

To download certificates, visit the product detail page: <https://www.phoenixcontact.com/us/products/0801715>



cUL Recognized

Approval ID: E255026



UL Recognized

Approval ID: E255026

DNV

Approval ID: TAE00003VJ

CES-STPG-GY - Blind sleeve



0801715

<https://www.phoenixcontact.com/us/products/0801715>

Classifications

ECLASS

| | |
|-------------|----------|
| ECLASS-13.0 | 27144425 |
| ECLASS-15.0 | 27144425 |

ETIM

| | |
|-----------|----------|
| ETIM 10.0 | EC000451 |
|-----------|----------|

UNSPSC

| | |
|-------------|----------|
| UNSPSC 21.0 | 39121400 |
|-------------|----------|

CES-STPG-GY - Blind sleeve



0801715

<https://www.phoenixcontact.com/us/products/0801715>

Environmental product compliance

EU RoHS

| | |
|---|--------------------|
| Fulfills EU RoHS substance requirements | Yes, No exemptions |
|---|--------------------|

China RoHS

| | |
|--|--|
| Environment friendly use period (EFUP) | EFUP-E |
| | No hazardous substances above the limits |

EU REACH SVHC

| | |
|-------------------------------------|----------------------------|
| REACH candidate substance (CAS No.) | No substance above 0.1 wt% |
|-------------------------------------|----------------------------|

EF3.1 Climate Change

| | |
|---------|---------------|
| CO2e kg | 0.058 kg CO2e |
|---------|---------------|

Phoenix Contact 2026 © - all rights reserved
<https://www.phoenixcontact.com>

Phoenix Contact USA
586 Fulling Mill Road
Middletown, PA 17057, United States
(+717) 944-1300
info@phoenixcon.com