

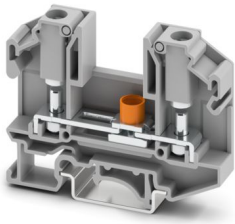
# OTTA 6-T - Disconnect terminal block



0790446

<https://www.phoenixcontact.com/us/products/0790446>

Please be informed that the data shown in this PDF document is generated from our online catalog. Please find the complete data in the user documentation. Our general terms of use for downloads are valid.



Disconnect terminal block, with disconnect slide, nom. voltage: 1000 V, nominal current: 36 A, connection method: Bolt connection, Rated cross section: 6 mm<sup>2</sup>, mounting: NS 35/7,5, NS 35/15, NS 32, color: gray

## Commercial data

Item number	0790446
Packing unit	50 pc
Minimum order quantity	50 pc
Sales key	BE45
Product key	BE4533
GTIN	4017918005559
Weight per piece (including packing)	30.842 g
Weight per piece (excluding packing)	30.842 g
Customs tariff number	85369010
Country of origin	IN

# OTTA 6-T - Disconnect terminal block



0790446

<https://www.phoenixcontact.com/us/products/0790446>

## Technical data

### Product properties

Product type	Bolt connection terminal block
Product family	OTTA
Number of connections	2
Number of rows	1
Potentials	1

### Insulation characteristics

Overvoltage category	III
Degree of pollution	3

### Electrical properties

Rated surge voltage	8 kV
Maximum power dissipation for nominal condition	1.31 W

### Connection data

Number of connections per level	2
Nominal cross section	6 mm <sup>2</sup>
Tightening torque disconnect slide	M4 0.6 ... 0.8 Nm

### Level 1 above 1 below 1

Connection method	Bolt connection
Stripping length	The stripping length depends on the specification provided by the cable lug manufacturer.
Connection in acc. with standard	IEC 60947-7-1
Nominal cross section	6 mm <sup>2</sup>
Nominal current	36 A
Maximum load current	36 A (with 6 mm <sup>2</sup> conductor cross-section)
Nominal voltage	1000 V (the nominal voltage applies to insulated cable lugs)

### Cable lug connection DIN 46234:1980-03

Connection in acc. with standard	DIN 46234:1980-03
Cross section	0.1 mm <sup>2</sup> ... 6 mm <sup>2</sup>
Cross section range AWG	24 ... 10 (converted acc. to IEC)
Hole diameter	4.3 mm
Width	9.6 mm
Bolt diameter	4 mm
Screw thread	M4
Tightening torque	1.5 ... 1.8 Nm
Identification color of ring cable lugs : red	1.5 mm <sup>2</sup>
Identification color of ring cable lugs : blue	2.5 mm <sup>2</sup>
Identification color of ring cable lugs : yellow	6 mm <sup>2</sup>
Connection in acc. with standard	DIN 46237:1970-07

# OTTA 6-T - Disconnect terminal block



0790446

<https://www.phoenixcontact.com/us/products/0790446>

Cross section	0.5 mm <sup>2</sup> ... 2.5 mm <sup>2</sup>
Cross section range AWG	20 ... 14 (converted acc. to IEC)
Hole diameter	4.3 mm
Width	9.6 mm
Bolt diameter	4 mm
Screw thread	M4
Tightening torque	1.5 ... 1.8 Nm

## Dimensions

Width	11 mm
End cover width	1.5 mm
Height	69 mm
Depth on NS 32	57 mm
Depth on NS 35/7,5	52 mm
Depth on NS 35/15	59.5 mm

## Material specifications

Color	gray (RAL 7042)
Flammability rating according to UL 94	V0
Insulating material group	I
Insulating material	PA
Static insulating material application in cold	-60 °C
Relative insulation material temperature index (Elec., UL 746 B)	130 °C
Fire protection for rail vehicles (DIN EN 45545-2) R22	HL 1 - HL 3
Fire protection for rail vehicles (DIN EN 45545-2) R23	HL 1 - HL 3
Fire protection for rail vehicles (DIN EN 45545-2) R24	HL 1 - HL 3
Fire protection for rail vehicles (DIN EN 45545-2) R26	HL 1 - HL 3
Surface flammability NFPA 130 (ASTM E 162)	passed
Specific optical density of smoke NFPA 130 (ASTM E 662)	passed
Smoke gas toxicity NFPA 130 (SMP 800C)	passed

## Electrical tests

### Surge voltage test

Test voltage setpoint	9.8 kV
Result	Test passed

### Temperature-rise test

Requirement temperature-rise test	Increase in temperature ≤ 45 K
Result	Test passed
Short-time withstand current 6 mm <sup>2</sup>	0.72 kA
Result	Test passed

### Power-frequency withstand voltage

Test voltage setpoint	2.2 kV
Result	Test passed

## Mechanical properties

### Mechanical data

Open side panel	Yes
-----------------	-----

## Mechanical tests

### Mechanical strength

Result	Test passed
--------	-------------

### Attachment on the carrier

DIN rail/fixing support	NS 32/NS 35
Test force setpoint	5 N
Result	Test passed

### Test for conductor damage and slackening

Rotation speed	10 (+/- 2) rpm
Revolutions	135
Conductor cross-section/weight	6 mm <sup>2</sup> / 1.4 kg
Result	Test passed

## Environmental and real-life conditions

### Needle-flame test

Time of exposure	30 s
Result	Test passed

### Oscillation/broadband noise

Specification	DIN EN 50155 (VDE 0115-200):2018-05
Spectrum	Long life test category 2, bogie-mounted
Frequency	$f_1 = 5 \text{ Hz}$ to $f_2 = 250 \text{ Hz}$
ASD level	6.12 (m/s <sup>2</sup> ) <sup>2</sup> /Hz
Acceleration	3.12g
Test duration per axis	5 h
Test directions	X-, Y- and Z-axis
Result	Test passed

### Shocks

Specification	DIN EN 50155 (VDE 0115-200):2018-05
Pulse shape	Half-sine
Acceleration	5g
Shock duration	50 ms
Number of shocks per direction	3
Test directions	X-, Y- and Z-axis (pos. and neg.)
Result	Test passed

### Ambient conditions

# OTTA 6-T - Disconnect terminal block



0790446

<https://www.phoenixcontact.com/us/products/0790446>

Ambient temperature (operation)	-60 °C ... 110 °C (Operating temperature range incl. self-heating; for max. short-term operating temperature, see RTI Elec.)
Ambient temperature (storage/transport)	-25 °C ... 60 °C (for a short time, not exceeding 24 h, -60 °C to +70 °C)
Ambient temperature (assembly)	-5 °C ... 70 °C
Ambient temperature (actuation)	-5 °C ... 70 °C
Permissible humidity (operation)	20 % ... 90 %
Permissible humidity (storage/transport)	30 % ... 70 %

## Standards and regulations

Connection in acc. with standard	IEC 60947-7-1
----------------------------------	---------------

## Mounting

Mounting type	NS 35/7,5
	NS 35/15
	NS 32
Screw thread	M4

# OTTA 6-T - Disconnect terminal block



0790446

<https://www.phoenixcontact.com/us/products/0790446>

## Drawings

Circuit diagram

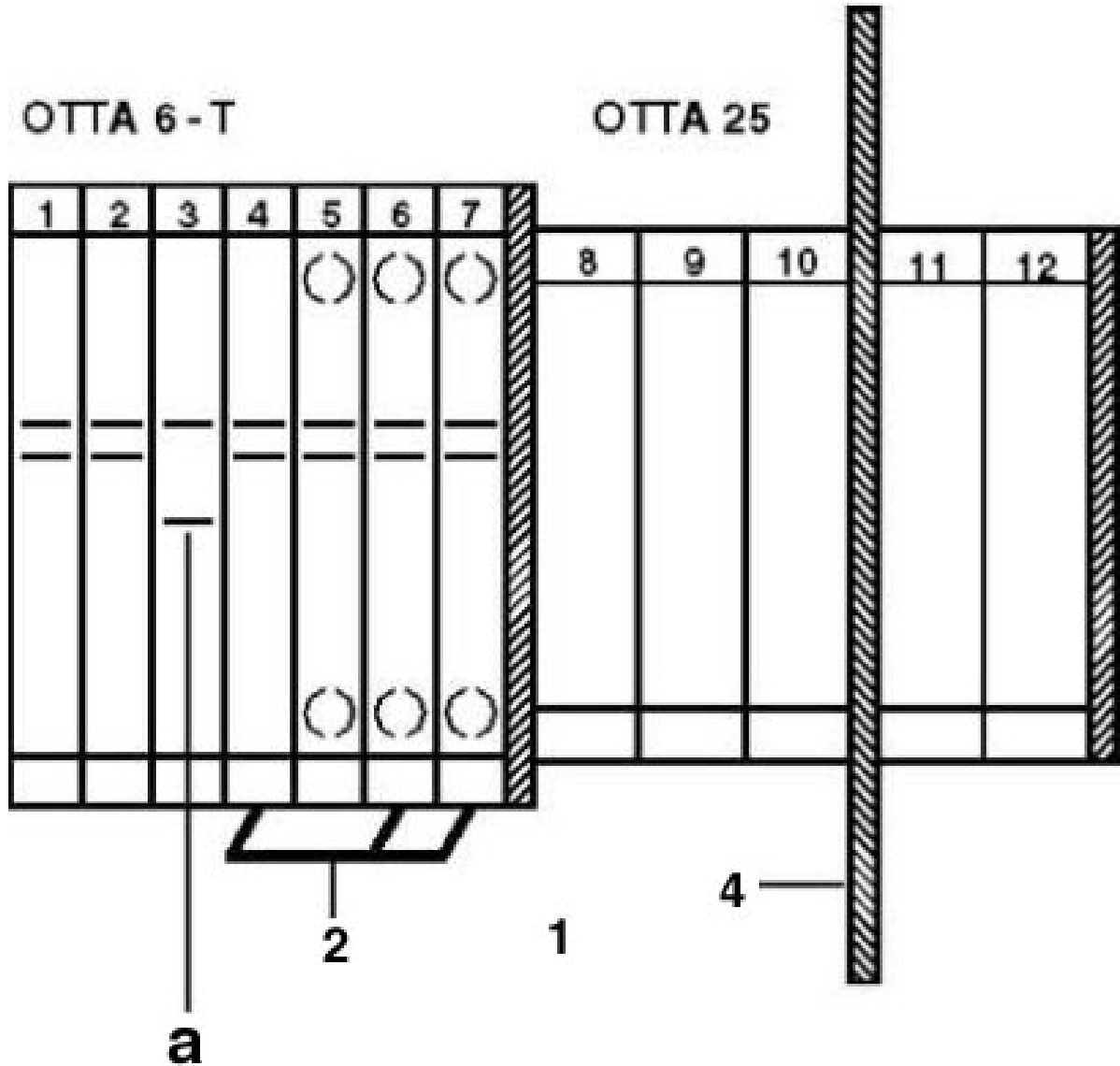


# OTTA 6-T - Disconnect terminal block

0790446

<https://www.phoenixcontact.com/us/products/0790446>

Circuit diagram



- a = open
- 1 = cover
- 2 = insertion bridge
- 4 = partition plate

# OTTA 6-T - Disconnect terminal block





0790446


<https://www.phoenixcontact.com/us/products/0790446>


## Approvals

To download certificates, visit the product detail page: <https://www.phoenixcontact.com/us/products/0790446>

 <b>CSA</b> Approval ID: 13631				
	Nominal voltage $U_N$	Nominal current $I_N$	Cross section AWG	Cross section $\text{mm}^2$
keine				
	600 V	25 A	22 - 10	-

 <b>UL Recognized</b> Approval ID: E60425				
	Nominal voltage $U_N$	Nominal current $I_N$	Cross section AWG	Cross section $\text{mm}^2$
B				
	600 V	30 A	-	-
C				
	600 V	30 A	-	-

 <b>EAC</b> Approval ID: RU C-DE.BL08.B.00540				
---	--	--	--	--

 <b>EAC</b> Approval ID: KZ7500651131219505				
---	--	--	--	--

<b>DNV</b> Approval ID: TAE00001CT				
---------------------------------------	--	--	--	--

# OTTA 6-T - Disconnect terminal block



0790446

<https://www.phoenixcontact.com/us/products/0790446>

## Classifications

### ECLASS

ECLASS-13.0	27250101
ECLASS-15.0	27250101

### ETIM

ETIM 10.0	EC000897
-----------	----------

### UNSPSC

UNSPSC 21.0	39121400
-------------	----------

# OTTA 6-T - Disconnect terminal block



0790446

<https://www.phoenixcontact.com/us/products/0790446>

## Environmental product compliance

### EU RoHS

Fulfills EU RoHS substance requirements	Yes, No exemptions
---	--------------------

### China RoHS

Environment friendly use period (EFUP)	EFUP-E
	No hazardous substances above the limits

### EU REACH SVHC

REACH candidate substance (CAS No.)	No substance above 0.1 wt%
-------------------------------------	----------------------------

Phoenix Contact 2026 © - all rights reserved  
<https://www.phoenixcontact.com>

Phoenix Contact USA  
586 Fulling Mill Road  
Middletown, PA 17057, United States  
(+717) 944-1300  
[info@phoenixcon.com](mailto:info@phoenixcon.com)