

# HDFK 95-F-VP/Z - Panel feed-through terminal block



0717076

<https://www.phoenixcontact.com/us/products/0717076>

Please be informed that the data shown in this PDF document is generated from our online catalog. Please find the complete data in the user documentation. Our general terms of use for downloads are valid.



Panel feed-through terminal block, connection method: Screw connection with tension sleeve, Cable lug connection, number of positions: 1, load current: 232 A, cross section: 35 mm<sup>2</sup> - 95 mm<sup>2</sup>, connection direction of the conductor to plug-in direction: 0 °, width: 25 mm, color: gray

## Your advantages

- Well-known connection principle allows worldwide use
- Low temperature rise, thanks to maximum contact force
- Tool-free snap-in principle enables easy mounting on the device panel
- Automatic panel thickness compensation enables universal use
- Reliable seal even with low-viscosity molding compounds

## Commercial data

Item number	0717076
Packing unit	10 pc
Minimum order quantity	10 pc
Sales key	AA28
Product key	AA1GAB
GTIN	4017918811068
Weight per piece (including packing)	178.03 g
Weight per piece (excluding packing)	178.03 g
Customs tariff number	85369010
Country of origin	GR

# HDFK 95-F-VP/Z - Panel feed-through terminal block



0717076

<https://www.phoenixcontact.com/us/products/0717076>

## Technical data

### Product properties

Product type	Panel feed-through terminal block
Product family	HDFK 95-VP
Number of positions	1
Pitch	25 mm
Number of connections	2
Number of rows	1
Number of potentials	1

### Insulation characteristics

Overvoltage category	III
Degree of pollution	3

### Electrical properties

#### Properties

Nominal current $I_N$	232 A
Nominal voltage $U_N$	630 V (metal panels 2.5 mm ... 5 mm)
Rated voltage (III/3)	630 V
Rated surge voltage (III/3)	6 kV

### Connection data

#### Connection technology

Connector system	HDFK 95
Nominal cross section	95 mm <sup>2</sup>

#### Conductor connection exterior

Connection method	Screw connection with tension sleeve
Connection direction of the conductor to plug-in direction	0 °
Conductor cross-section rigid	35 mm <sup>2</sup> ... 95 mm <sup>2</sup>
Conductor cross-section flexible	35 mm <sup>2</sup> ... 95 mm <sup>2</sup>
Conductor cross-section, flexible, with ferrule, without plastic sleeve	30 mm <sup>2</sup> ... 95 mm <sup>2</sup>
Conductor cross-section, flexible, with ferrule, with plastic sleeve	30 mm <sup>2</sup> ... 95 mm <sup>2</sup>
2 conductors with same cross section, rigid	25 mm <sup>2</sup> ... 35 mm <sup>2</sup>
2 conductors with same cross section, flexible	25 mm <sup>2</sup> ... 35 mm <sup>2</sup>
2 conductors with same cross section, flexible, with ferrule without plastic sleeve	16 mm <sup>2</sup> ... 35 mm <sup>2</sup>
Internal cylindrical gage	B12
Stripping length	27 mm
Tightening torque	15 Nm ... 20 Nm

#### Conductor connection interior

# HDFK 95-F-VP/Z - Panel feed-through terminal block



0717076

<https://www.phoenixcontact.com/us/products/0717076>

Connection method	Cable lug connection
Connection direction of the conductor to plug-in direction	0 °

## Mounting

Panel thickness	1 mm...6 mm
-----------------	-------------

## Material specifications

### Material data - contact

Note	WEEE/RoHS-compliant, free of whiskers according to IEC 60068-2-82/JEDEC JESD 201
Contact material	Cu alloy
Surface characteristics	tin-plated

### Material data - housing

Color (Housing)	gray (7042)
Insulating material	PA
Insulating material group	I
CTI according to IEC 60112	600
Flammability rating according to UL 94	V0
Glow wire flammability index GWFI according to EN 60695-2-12	850
Glow wire ignition temperature GWIT according to EN 60695-2-13	775
Temperature for the ball pressure test according to EN 60695-10-2	125 °C

## Notes

### Safety note

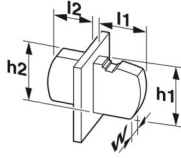
Safety note	<ul style="list-style-type: none"><li>• Only electrically qualified personnel may install and operate the product. To recognize and prevent danger, the qualified personnel must be familiar with the basics of electrical engineering.</li><li>• Observe the technical data provided here and refer to the documents listed under "Downloads". The download area contains important information, such as installation notes, technical drawings, and 3D data.</li><li>• The cable entry funnel is not safe to touch. Never connect or disconnect the terminal when it is energized. Take appropriate steps to ensure touch protection.</li><li>• To maintain the nominal voltage, align the cable lugs straight and centered, and cast the terminals on the inside.</li><li>• There is no electrical contact to the housing. Make sure that protective grounding is provided for green/yellow color variants and articles marked with PE.</li></ul>
-------------	--

## Dimensions

# HDFK 95-F-VP/Z - Panel feed-through terminal block

0717076

<https://www.phoenixcontact.com/us/products/0717076>

Dimensional drawing	
Pitch	25 mm
Width [w]	25 mm
Height [h]	74 mm
Length [l]	91.5 mm

## Electrical tests

### Air clearances and creepage distances | 1. Insulation coordination

Application	Metal wall 2.5 mm ... 5.0 mm
Specification	IEC 60947-7-1:1989-10 + AMD 1:1999-06
Insulating material group	I
Comparative tracking index (IEC 60112)	CTI 600
Rated insulation voltage (III/3)	630 V
Rated surge voltage (III/3)	6 kV
minimum clearance value - non-homogenous field (III/3)	5.5 mm
minimum creepage distance (III/3)	8 mm

### Air clearances and creepage distances | 2. Insulation coordination

Application	Metal panel > 5.0 mm ... 6.0 mm
Specification	IEC 60947-7-1:1989-10 + AMD 1:1999-06
Insulating material group	I
Comparative tracking index (IEC 60112)	CTI 600
Rated insulation voltage (III/3)	500 V
Rated surge voltage (III/3)	6 kV
minimum clearance value - non-homogenous field (III/3)	5.5 mm
minimum creepage distance (III/3)	6.3 mm

### Air clearances and creepage distances | 3. Insulation coordination

Application	Plastic panel 2.5 ... 6.0 mm
Specification	IEC 60947-7-1:1989-10 + AMD 1:1999-06
Insulating material group	I
Comparative tracking index (IEC 60112)	CTI 600
Rated insulation voltage (III/3)	630 V
Rated surge voltage (III/3)	6 kV
minimum clearance value - non-homogenous field (III/3)	5.5 mm
minimum creepage distance (III/3)	8 mm

## Environmental and real-life conditions

### Ambient conditions

# HDFK 95-F-VP/Z - Panel feed-through terminal block



0717076

<https://www.phoenixcontact.com/us/products/0717076>

Relative humidity (storage/transport)	30 % ... 70 %
---------------------------------------	---------------

## Packaging specifications

Type of packaging	packed in cardboard
-------------------	---------------------

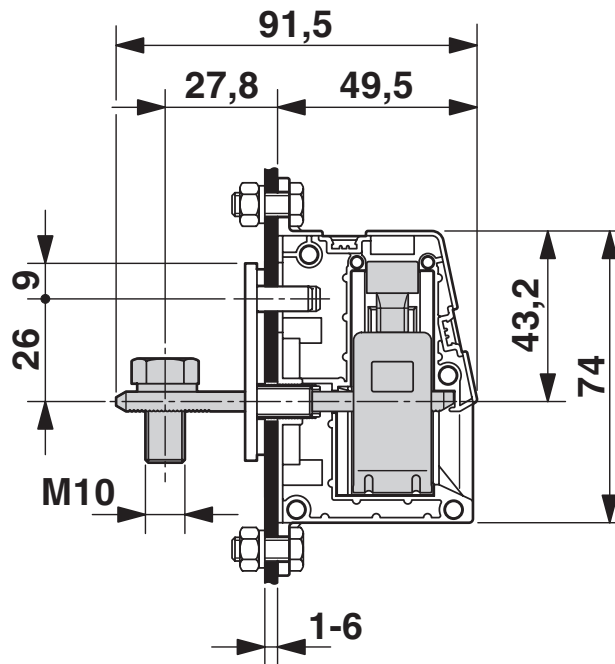
# HDFK 95-F-VP/Z - Panel feed-through terminal block

0717076

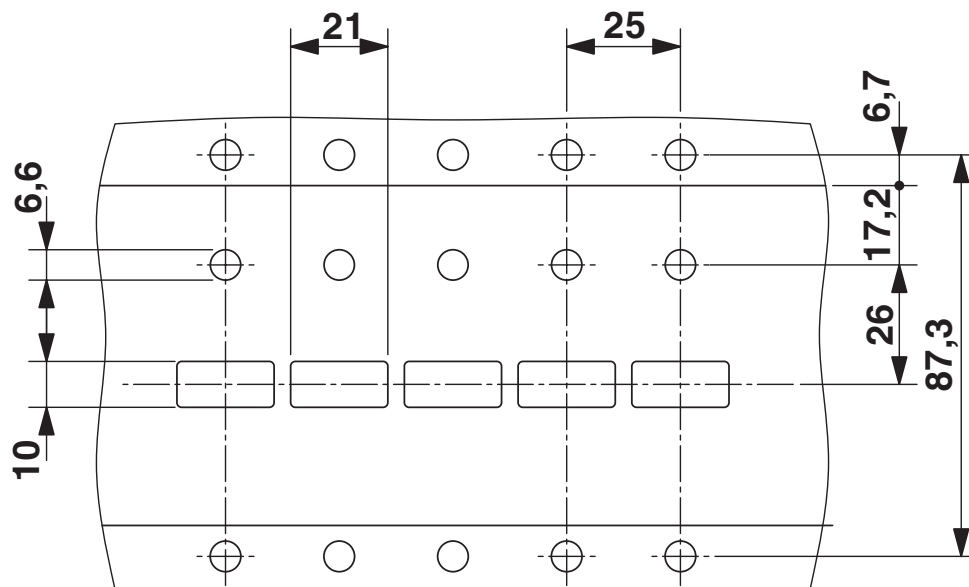
<https://www.phoenixcontact.com/us/products/0717076>

## Drawings

Dimensional drawing



Dimensional drawing



# HDFK 95-F-VP/Z - Panel feed-through terminal block





0717076

<https://www.phoenixcontact.com/us/products/0717076>

## Approvals

To download certificates, visit the product detail page: <https://www.phoenixcontact.com/us/products/0717076>

 <b>CSA</b> Approval ID: 13631				
	Nominal voltage $U_N$	Nominal current $I_N$	Cross section AWG	Cross section $\text{mm}^2$
B	600 V	230 A	2 - 4/0	-
C	600 V	230 A	2 - 4/0	-

 <b>UL Recognized</b> Approval ID: E60425-19890329				
	Nominal voltage $U_N$	Nominal current $I_N$	Cross section AWG	Cross section $\text{mm}^2$
B	600 V	230 A	4 - 4/0	-
C	600 V	230 A	4 - 4/0	-

# HDFK 95-F-VP/Z - Panel feed-through terminal block



0717076

<https://www.phoenixcontact.com/us/products/0717076>

## Classifications

### ECLASS

ECLASS-13.0	27141134
ECLASS-15.0	27141134

### ETIM

ETIM 9.0	EC001283
----------	----------

### UNSPSC

UNSPSC 21.0	39121400
-------------	----------

# HDFK 95-F-VP/Z - Panel feed-through terminal block



0717076

<https://www.phoenixcontact.com/us/products/0717076>

## Environmental product compliance

### EU RoHS

Fulfills EU RoHS substance requirements	Yes, No exemptions
---	--------------------

### China RoHS

Environment friendly use period (EFUP)	EFUP-E
	No hazardous substances above the limits

### EU REACH SVHC

REACH candidate substance (CAS No.)	No substance above 0.1 wt%
-------------------------------------	----------------------------

Phoenix Contact 2026 © - all rights reserved  
<https://www.phoenixcontact.com>

Phoenix Contact USA  
586 Fulling Mill Road  
Middletown, PA 17057, United States  
(+717) 944-1300  
[info@phoenixcon.com](mailto:info@phoenixcon.com)