

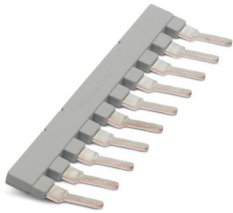
# EB 10-15 - Insertion bridge

0205135

<https://www.phoenixcontact.com/us/products/0205135>

Please be informed that the data shown in this PDF document is generated from our online catalog. Please find the complete data in the user documentation. Our general terms of use for downloads are valid.

Insertion bridge, pitch: 15.25 mm, number of positions: 10, color: gray



## Commercial data

Item number	0205135
Packing unit	10 pc
Minimum order quantity	10 pc
Sales key	BE19
Product key	BE1Z2X
GTIN	4017918098285
Weight per piece (including packing)	41.82 g
Weight per piece (excluding packing)	41.82 g
Customs tariff number	85366990
Country of origin	PL

# EB 10-15 - Insertion bridge



0205135

<https://www.phoenixcontact.com/us/products/0205135>

## Technical data

### Product properties

Product type	Insertion bridge
Number of positions	10
Pitch	15.25 mm
Potentials	10

### Dimensions

Pitch	15.25 mm
-------	----------

### Material specifications

Color	gray (RAL 7042)
Material	Copper
Insulating material	PA

### Mounting

Mounting type	Screw mounting
---------------	----------------

# EB 10-15 - Insertion bridge



0205135

<https://www.phoenixcontact.com/us/products/0205135>

## Classifications

### ECLASS

ECLASS-13.0	27250303
ECLASS-15.0	27250303

### ETIM

ETIM 10.0	EC000489
-----------	----------

### UNSPSC

UNSPSC 21.0	39121400
-------------	----------

# EB 10-15 - Insertion bridge



0205135

<https://www.phoenixcontact.com/us/products/0205135>

## Environmental product compliance

### EU RoHS

Fulfills EU RoHS substance requirements	Yes, No exemptions
---	--------------------

### China RoHS

Environment friendly use period (EFUP)	EFUP-E
	No hazardous substances above the limits

### EU REACH SVHC

REACH candidate substance (CAS No.)	No substance above 0.1 wt%
-------------------------------------	----------------------------

### EF3.1 Climate Change

CO2e kg	0.585 kg CO2e
---------	---------------

Phoenix Contact 2026 © - all rights reserved  
<https://www.phoenixcontact.com>

Phoenix Contact USA  
586 Fulling Mill Road  
Middletown, PA 17057, United States  
(+717) 944-1300  
[info@phoenixcon.com](mailto:info@phoenixcon.com)