

# CASE PTI INSTA L-BOXX DE - Starter kit



1185519

<https://www.phoenixcontact.com/us/products/1185519>

Please be informed that the data shown in this PDF document is generated from our online catalog. Please find the complete data in the user documentation. Our general terms of use for downloads are valid.



Starter kit, Installation terminal block starter set in a practical Sortimo L-BOXX 102 system case. 108 PTI installation terminal blocks, cross section 0.14 mm<sup>2</sup> to 16 mm<sup>2</sup>, 19 end covers, 5 support brackets, 20 plug-in bridges, 1 screwdriver, marking material, and accessories, color: black

## Commercial data

Item number	1185519
Packing unit	1 pc
Minimum order quantity	1 pc
Product key	BE2251
GTIN	4063151226312
Weight per piece (including packing)	5,243 g
Weight per piece (excluding packing)	5.381 g
Country of origin	PL

# CASE PTI INSTA L-BOXX DE - Starter kit

1185519

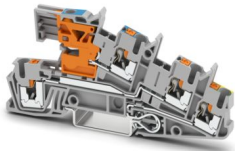
<https://www.phoenixcontact.com/us/products/1185519>

## Set consists of

### PTI 2,5-PE/L/NT - Installation protective conductor terminal block

3213946

<https://www.phoenixcontact.com/us/products/3213946>



### Installation protective conductor terminal block, **Assembly instructions:**

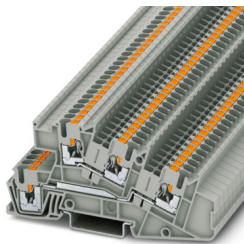
For secure fastening of the neutral busbar, supports must be set at the beginning and end of each terminal strip as well as every 20 cm on longer terminal strips., nom. voltage: 400 V, nominal current: 24 A, Push-in connection, 1st, 2nd and 3rd level, Rated cross section: 2.5 mm<sup>2</sup>, cross section: 0.14 mm<sup>2</sup> - 4 mm<sup>2</sup>, mounting type: NS 35/7,5, NS 35/15, color: gray

---

### PTI 2,5-L/L - Installation level terminal block

3213953

<https://www.phoenixcontact.com/us/products/3213953>



Installation level terminal block, nom. voltage: 400 V, nominal current: 24 A, Push-in connection, 1st, 2nd and 3rd level, Rated cross section: 2.5 mm<sup>2</sup>, cross section: 0.14 mm<sup>2</sup> - 4 mm<sup>2</sup>, Push-in connection, mounting type: NS 35/7,5, NS 35/15, color: gray

# CASE PTI INSTA L-BOXX DE - Starter kit

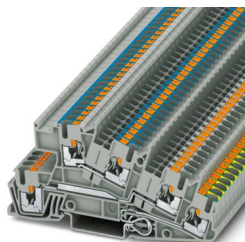
1185519

<https://www.phoenixcontact.com/us/products/1185519>

## PTI 2,5-PE/L/N - Installation protective conductor terminal block

3213950

<https://www.phoenixcontact.com/us/products/3213950>



Installation protective conductor terminal block, nom. voltage: 400 V, nominal current: 24 A, Push-in connection, 1st, 2nd and 3rd level, Rated cross section: 2.5 mm<sup>2</sup>, cross section: 0.14 mm<sup>2</sup> - 4 mm<sup>2</sup>, mounting type: NS 35/7,5, NS 35/15, color: gray

---

## FBS 10-5 - Plug-in bridge

3030213

<https://www.phoenixcontact.com/us/products/3030213>



Plug-in bridge, pitch: 5.2 mm, number of positions: 10, nominal current: 24 A, length: 23 mm, color: red

# CASE PTI INSTA L-BOXX DE - Starter kit



1185519

<https://www.phoenixcontact.com/us/products/1185519>

## FBS 2-5 - Plug-in bridge

3030161

<https://www.phoenixcontact.com/us/products/3030161>



Plug-in bridge, pitch: 5.2 mm, number of positions: 2, nominal current: 24 A, length: 23 mm, color: red

---

## D-PTI/3 - End cover

3213975

<https://www.phoenixcontact.com/us/products/3213975>



End cover, depth: 48.2 mm, width: 2.2 mm, height: 101 mm, color: gray

# CASE PTI INSTA L-BOXX DE - Starter kit

1185519

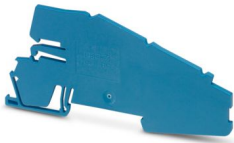
<https://www.phoenixcontact.com/us/products/1185519>

## AB-PTI/3 - Support bracket

3213974

<https://www.phoenixcontact.com/us/products/3213974>

Support bracket, Bracket for busbars, set every 20 cm, pitch: 200 mm, depth: 46 mm, width: 2 mm, height: 103 mm, number of positions: 1, color: blue



---

## ZBFM 5/WH,LGS:1-120 - Zack marker strip

0800271

<https://www.phoenixcontact.com/us/products/0800271>

Zack marker strip, Sheet, white (RAL 9010), labeled, printed horizontally: consecutive numbers 1 ... 120, mounting type: latching, for terminal block width: 5.2 mm, Number of individual labels: 120, text field height: 5 mm, text field width: 4.5 mm



# CASE PTI INSTA L-BOXX DE - Starter kit

1185519

<https://www.phoenixcontact.com/us/products/1185519>

## ZBF 5 CUS - Zack Marker strip, flat

0825025

<https://www.phoenixcontact.com/us/products/0825025>



Zack Marker strip, flat, can be ordered: Strip, white (RAL 9010), labeled according to customer specifications, mounting type: snap into flat marker groove, for terminal block width: 5 mm, Number of individual labels: 10, text field height: 5.15 mm, text field width: 5.15 mm

---

## PTI 4-PE/L/NT - Installation protective conductor terminal block

3214047

<https://www.phoenixcontact.com/us/products/3214047>



Installation protective conductor terminal block, **Assembly instruction:**  
In order to securely fix the neutral busbar in place, support brackets must be placed at the beginning and end of each terminal strip as well as every 20 cm on longer terminal strips.  
The corresponding support brackets can be found at [phoenixcontact.com/products](https://www.phoenixcontact.com/products), nom. voltage: 400 V, nominal current: 28 A, Push-in connection, 1st, 2nd and 3rd level, Rated cross section: 4 mm<sup>2</sup>, cross section: 0.2 mm<sup>2</sup> - 6 mm<sup>2</sup>, mounting type: NS 35/7,5, NS 35/15, color: gray

# CASE PTI INSTA L-BOXX DE - Starter kit



1185519

<https://www.phoenixcontact.com/us/products/1185519>

## PTI 4-L/L - Installation level terminal block

3214052

<https://www.phoenixcontact.com/us/products/3214052>



Installation level terminal block, nom. voltage: 400 V, nominal current: 28 A, Push-in connection, 1st, 2nd and 3rd level, Rated cross section: 4 mm<sup>2</sup>, cross section: 0.2 mm<sup>2</sup> - 6 mm<sup>2</sup>, mounting type: NS 35/7,5, NS 35/15, color: gray

---

## D-PTI 4/3 - End cover

3214054

<https://www.phoenixcontact.com/us/products/3214054>

End cover, depth: 48.2 mm, width: 2.2 mm, height: 114 mm, color: gray



# CASE PTI INSTA L-BOXX DE - Starter kit

1185519

<https://www.phoenixcontact.com/us/products/1185519>

## PTI 16/S - Installation terminal block

3214029

<https://www.phoenixcontact.com/us/products/3214029>



Installation terminal block, nom. voltage: 500 V, nominal current: 76 A, Push-in connection, 1 level, Rated cross section: 16 mm<sup>2</sup>, cross section: 0.5 mm<sup>2</sup> - 16 mm<sup>2</sup>, mounting type: NS 35/7,5, NS 35/15, color: gray

---

## PTI 16/S BU - Installation terminal block

3214023

<https://www.phoenixcontact.com/us/products/3214023>



Installation terminal block, nom. voltage: 500 V, nominal current: 76 A, Push-in connection, 1 level, Rated cross section: 16 mm<sup>2</sup>, cross section: 0.5 mm<sup>2</sup> - 16 mm<sup>2</sup>, mounting type: NS 35/7,5, NS 35/15, color: blue

# CASE PTI INSTA L-BOXX DE - Starter kit

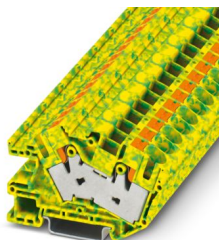
1185519

<https://www.phoenixcontact.com/us/products/1185519>

## PTI 16/S-PE - Installation protective conductor terminal block

3214024

<https://www.phoenixcontact.com/us/products/3214024>



Installation protective conductor terminal block, Push-in connection, 1 level, cross section: 0.5 mm<sup>2</sup> - 16 mm<sup>2</sup>, mounting type: NS 35/7,5, NS 35/15, color: green-yellow

---

## D-PTI 16/S - End cover

3214027

<https://www.phoenixcontact.com/us/products/3214027>

End cover, depth: 43.4 mm, width: 2.2 mm, height: 77.7 mm, color: gray



# CASE PTI INSTA L-BOXX DE - Starter kit

1185519

<https://www.phoenixcontact.com/us/products/1185519>

## ZB10,LGS:L1-N,PE - Marker for terminal blocks

1053412

<https://www.phoenixcontact.com/us/products/1053412>



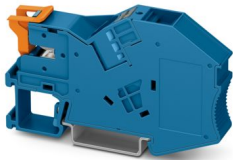
Marker for terminal blocks, Strip, white (RAL 9010), labeled, can be labeled with: CMS-P1-PLOTTER, horizontal: L1, L2, L3, N, PE, L1, L2, L3, N, PE, mounting type: latching, for terminal block width: 10.2 mm, Number of individual labels: 10, text field height: 10.5 mm, text field width: 10.15 mm

---

## PTI 16-NLS-FI BU - Installation terminal block

1030131

<https://www.phoenixcontact.com/us/products/1030131>



Installation terminal block, with end bracket function, nom. voltage: 1000 V, nominal current: 70 A, Push-in connection, 1 level, Rated cross section: 16 mm<sup>2</sup>, cross section: 0.5 mm<sup>2</sup> - 25 mm<sup>2</sup>, mounting type: NS 35/7,5, NS 35/15, color: blue

# CASE PTI INSTA L-BOXX DE - Starter kit



1185519

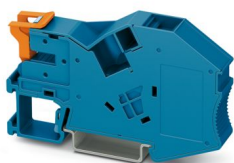
<https://www.phoenixcontact.com/us/products/1185519>

## AB-PTI 16-NLS BU - Support bracket

1030138

<https://www.phoenixcontact.com/us/products/1030138>

Support bracket, depth: 46.8 mm, width: 12.2 mm, height: 81.9 mm, color: blue



---

## AP-NLS N - Cover profile

1013634

<https://www.phoenixcontact.com/us/products/1013634>

Cover profile, height: 300 mm, color: transparent



# CASE PTI INSTA L-BOXX DE - Starter kit



1185519

<https://www.phoenixcontact.com/us/products/1185519>

## CLIPFIX 35-5 - End bracket

3022276

<https://www.phoenixcontact.com/us/products/3022276>



Quick mounting end clamp for NS 35/7,5 DIN rail or NS 35/15 DIN rail, with marking option, with parking option for FBS...5, FBS...6, KSS 5, KSS 6, width: 5.15 mm, color: gray

---

## NLS-CU 3/10 SN 1000MM - Neutral busbar

0402174

<https://www.phoenixcontact.com/us/products/0402174>



Neutral busbar, DIN VDE 0611-4: 1991-02, color: silver-colored

# CASE PTI INSTA L-BOXX DE - Starter kit



1185519

<https://www.phoenixcontact.com/us/products/1185519>

## ST-BW - Actuation tool

1207608

<https://www.phoenixcontact.com/us/products/1207608>



Actuation tool, for all 2.5 mm<sup>2</sup> - 4.0 mm<sup>2</sup> spring-cages

---

## B-STIFT - Marker pen

1051993

<https://www.phoenixcontact.com/us/products/1051993>



Marker pen, for manual labeling of unprinted Zack strips, smear-proof and waterproof, line thickness 0.5 mm

# CASE PTI INSTA L-BOXX DE - Starter kit



1185519

<https://www.phoenixcontact.com/us/products/1185519>

## Technical data

### Product properties

Product type	Feed-through terminal block
--------------	-----------------------------

### Dimensions

Width	445 mm
Height	358 mm
Depth	118 mm

### Material specifications

Color	black (RAL 9005)
-------	------------------

# CASE PTI INSTA L-BOXX DE - Starter kit



1185519

<https://www.phoenixcontact.com/us/products/1185519>

## Approvals

To download certificates, visit the product detail page: <https://www.phoenixcontact.com/us/products/1185519>



**EAC**

Approval ID: KZ7500651131219505

# CASE PTI INSTA L-BOXX DE - Starter kit



1185519

<https://www.phoenixcontact.com/us/products/1185519>

## Classifications

### ECLASS

ECLASS-13.0	27141190
ECLASS-15.0	27141190

### ETIM

ETIM 10.0	EC002848
-----------	----------

### UNSPSC

UNSPSC 21.0	39121400
-------------	----------

# CASE PTI INSTA L-BOXX DE - Starter kit



1185519

<https://www.phoenixcontact.com/us/products/1185519>

## Environmental product compliance

### EU RoHS

Fulfills EU RoHS substance requirements	Not applicable, No electrical and electronic equipment (EEE), cannot be used in EEE
---	---

### EU REACH SVHC

REACH candidate substance (CAS No.)	No substance above 0.1 wt%
-------------------------------------	----------------------------

### EF3.1 Climate Change

CO2e kg	42.004 kg CO2e
---------	----------------

Phoenix Contact 2026 © - all rights reserved  
<https://www.phoenixcontact.com>

Phoenix Contact USA  
586 Fulling Mill Road  
Middletown, PA 17057, United States  
(+717) 944-1300  
[info@phoenixcon.com](mailto:info@phoenixcon.com)