

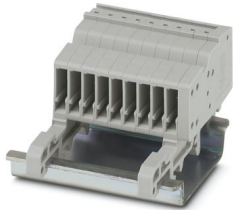
PPC 1,5/S-NS/9 - COMBI coupling



3213455

<https://www.phoenixcontact.com/us/products/3213455>

Please be informed that the data shown in this PDF document is generated from our online catalog. Please find the complete data in the user documentation. Our general terms of use for downloads are valid.



COMBI coupling, nom. voltage: 500 V, nominal current: 17.5 A, number of connections: 1, number of positions: 9, connection method: Push-in connection, Rated cross section: 1.5 mm², 1 level, cross section: 0.14 mm² - 1.5 mm², mounting type: NS 35/15, NS 35/7,5, color: gray

Your advantages

- For secure and space-saving accommodation of plug-in contacts in cable ducts and distributor shafts
- The Push-in technology COMBI couplings for self-assembly provide solutions that users can implement themselves
- Tested for railway applications

Commercial data

| | |
|--------------------------------------|---------------|
| Item number | 3213455 |
| Packing unit | 25 pc |
| Minimum order quantity | 25 pc |
| Sales key | BE22 |
| Product key | BE2245 |
| GTIN | 4046356802628 |
| Weight per piece (including packing) | 15.948 g |
| Weight per piece (excluding packing) | 15.948 g |
| Customs tariff number | 85366990 |
| Country of origin | PL |

PPC 1,5/S-NS/9 - COMBI coupling



3213455

<https://www.phoenixcontact.com/us/products/3213455>

Technical data

Product properties

| | |
|-----------------------|-------------------|
| Product type | Terminal coupling |
| Area of application | Railway industry |
| | Machine building |
| | Plant engineering |
| Number of positions | 9 |
| Pitch | 3.5 mm |
| Number of connections | 1 |
| Number of rows | 1 |
| Potentials | 9 |

Insulation characteristics

| | |
|----------------------|-----|
| Overvoltage category | III |
| Degree of pollution | 3 |

Electrical properties

| | |
|---|--------|
| Rated surge voltage | 6 kV |
| Maximum power dissipation for nominal condition | 0.56 W |

Connection data

| | |
|-----------------------|---------------------|
| Nominal cross section | 1.5 mm ² |
|-----------------------|---------------------|

1 level

| | |
|---|---|
| Connection method | Push-in connection |
| Stripping length | 8 mm |
| Internal cylindrical gage | A1 / B1 |
| Connection in acc. with standard | IEC 61984 |
| Conductor cross-section rigid | 0.14 mm ² ... 1.5 mm ² |
| Cross section AWG | 26 ... 16 (converted acc. to IEC) |
| Conductor cross-section flexible | 0.14 mm ² ... 1.5 mm ² |
| Conductor cross-section, flexible [AWG] | 26 ... 16 (converted acc. to IEC) |
| Conductor cross-section flexible (ferrule without plastic sleeve) | 0.14 mm ² ... 1.5 mm ² |
| Flexible conductor cross-section (ferrule with plastic sleeve) | 0.14 mm ² ... 1 mm ² |
| Nominal cross section | 1.5 mm ² |
| Nominal current | 17.5 A |
| Maximum load current | 17.5 A (with 1.5 mm ² conductor cross-section) |
| Nominal voltage | 500 V |

1 level Connection cross sections directly pluggable

| | |
|---|--|
| Conductor cross-section rigid | 0.25 mm ² ... 1.5 mm ² |
| Conductor cross-section flexible (ferrule without plastic sleeve) | 0.34 mm ² ... 1.5 mm ² |
| Flexible conductor cross-section (ferrule with plastic sleeve) | 0.34 mm ² ... 1 mm ² |

PPC 1,5/S-NS/9 - COMBI coupling



3213455

<https://www.phoenixcontact.com/us/products/3213455>

Dimensions

| | |
|--------------------|---------|
| Width | 34.5 mm |
| End cover width | 2.2 mm |
| Height | 43 mm |
| Depth | 27.1 mm |
| Depth on NS 15 | 28.3 mm |
| Depth on NS 35/7,5 | 28.3 mm |
| Depth on NS 35/15 | 35.8 mm |
| Pitch | 3.5 mm |

Material specifications

| | |
|---|-----------------|
| Color | gray (RAL 7042) |
| Flammability rating according to UL 94 | V0 |
| Insulating material group | I |
| Insulating material | PA |
| Static insulating material application in cold | -60 °C |
| Temperature index of insulation material (DIN EN 60216-1 (VDE 0304-21)) | 130 °C |
| Relative insulation material temperature index (Elec., UL 746 B) | 130 °C |
| Fire protection for rail vehicles (DIN EN 45545-2) R22 | HL 1 - HL 3 |
| Fire protection for rail vehicles (DIN EN 45545-2) R23 | HL 1 - HL 3 |
| Fire protection for rail vehicles (DIN EN 45545-2) R24 | HL 1 - HL 3 |
| Fire protection for rail vehicles (DIN EN 45545-2) R26 | HL 1 - HL 3 |
| Calorimetric heat release NFPA 130 (ASTM E 1354) | 28 MJ/kg |
| Surface flammability NFPA 130 (ASTM E 162) | passed |
| Specific optical density of smoke NFPA 130 (ASTM E 662) | passed |
| Smoke gas toxicity NFPA 130 (SMP 800C) | passed |

Mechanical properties

Mechanical data

| | |
|-----------------|-----|
| Open side panel | Yes |
|-----------------|-----|

Environmental and real-life conditions

Ambient conditions

| | |
|--|---|
| Ambient temperature (operation) | -60 °C (max. operating temperature see derating curve) |
| Ambient temperature (storage/transport) | -25 °C ... 60 °C (for a short time, not exceeding 24 h, -60 °C to +70 °C) |
| Ambient temperature (assembly) | -5 °C ... 70 °C |
| Ambient temperature (actuation) | -5 °C ... 70 °C |
| Permissible humidity (operation) | 20 % ... 90 % |
| Permissible humidity (storage/transport) | 30 % ... 70 % |

Standards and regulations

PPC 1,5/S-NS/9 - COMBI coupling



3213455

<https://www.phoenixcontact.com/us/products/3213455>

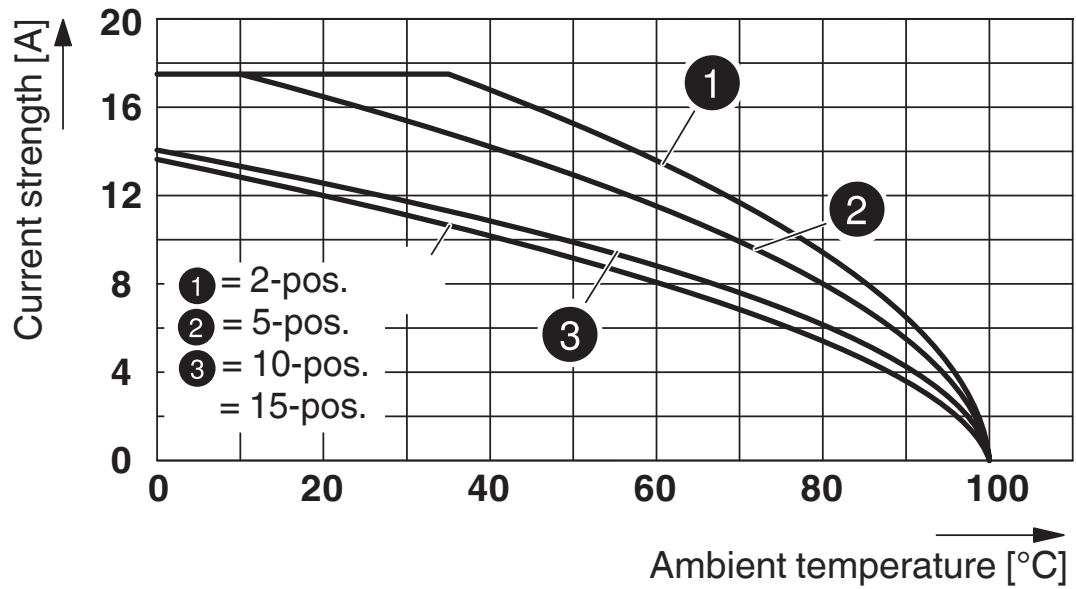
| | |
|----------------------------------|-----------|
| Connection in acc. with standard | IEC 61984 |
|----------------------------------|-----------|

Mounting

| | |
|---------------|-----------|
| Mounting type | NS 35/15 |
| | NS 35/7,5 |

Drawings

Diagram



Circuit diagram



PPC 1,5/S-NS/9 - COMBI coupling



3213455

<https://www.phoenixcontact.com/us/products/3213455>

Approvals

To download certificates, visit the product detail page: <https://www.phoenixcontact.com/us/products/3213455>



EAC

Approval ID: KZ7500651131219505

PPC 1,5/S-NS/9 - COMBI coupling



3213455

<https://www.phoenixcontact.com/us/products/3213455>

Classifications

ECLASS

| | |
|-------------|----------|
| ECLASS-13.0 | 27250117 |
| ECLASS-15.0 | 27250117 |

ETIM

| | |
|-----------|----------|
| ETIM 10.0 | EC000897 |
|-----------|----------|

UNSPSC

| | |
|-------------|----------|
| UNSPSC 21.0 | 39121400 |
|-------------|----------|

PPC 1,5/S-NS/9 - COMBI coupling



3213455

<https://www.phoenixcontact.com/us/products/3213455>

Environmental product compliance

EU RoHS

| | |
|---|--------------------|
| Fulfills EU RoHS substance requirements | Yes, No exemptions |
|---|--------------------|

China RoHS

| | |
|--|--|
| Environment friendly use period (EFUP) | EFUP-E |
| | No hazardous substances above the limits |

EU REACH SVHC

| | |
|-------------------------------------|----------------------------|
| REACH candidate substance (CAS No.) | No substance above 0.1 wt% |
|-------------------------------------|----------------------------|

Phoenix Contact 2026 © - all rights reserved
<https://www.phoenixcontact.com>

Phoenix Contact USA
586 Fulling Mill Road
Middletown, PA 17057, United States
(+717) 944-1300
info@phoenixcon.com