

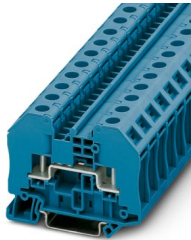
# RT 3 BU - Bolt connection terminal block



3049110

<https://www.phoenixcontact.com/us/products/3049110>

Please be informed that the data shown in this PDF document is generated from our online catalog. Please find the complete data in the user documentation. Our general terms of use for downloads are valid.



Feed-through terminal block with bolt connection technology, cross section: 0.1 ... 2.5 mm<sup>2</sup>, AWG: 26 ... 14, width 12.3 mm, color: blue

## Your advantages

- Quick ring cable lug wiring due to the hinged cover
- Secure connection: The screws are secured by captive disk springs
- The hinged cover cover the live metal parts including the insulated cable lugs in the clamping area so that they are touch proof
- High conductor pull-out forces and contact force for high durability
- Space-saving multi-conductor connection possible
- Full flexibility thanks to the standardized CLIPLINE complete bridging, marking, and testing accessories
- Vibration-resistant conductor connection

## Commercial data

Item number	3049110
Packing unit	50 pc
Minimum order quantity	50 pc
Sales key	BE43
Product key	BE4313
GTIN	4046356140157
Weight per piece (including packing)	25.74 g
Weight per piece (excluding packing)	25 g
Customs tariff number	85369010
Country of origin	CN

# RT 3 BU - Bolt connection terminal block



3049110

<https://www.phoenixcontact.com/us/products/3049110>

## Technical data

### Notes

General	Note: the BE-RT... path extension is to be used for non-insulated cable lugs (see accessories).
---------	---

### General

Note	The rated insulation voltage applies to insulated cable lugs acc. DIN 46237:1970-07 and for uninsulated cable lugs acc. DIN 46234:1980-03 with shrink sleeve.
	The rated insulation voltage applies to insulated cable lugs acc. DIN 46237:1970-07 and for uninsulated cable lugs acc. DIN 46234:1980-03 with shrink sleeve. When using uninsulated cable lugs with shrink sleeve the min. required air clearances and creepage distances have to be ensured by the enduser.
	The rated insulation voltage applies to insulated cable lugs acc. to DIN 46237:1970-07 and for uninsulated cable lugs acc. to DIN 46234:1980-03 with path extension.

### Product properties

Product type	Bolt connection terminal block
Product family	RT
Area of application	Railway industry
	Machine building
	Plant engineering
	Process industry
Number of connections	2
Number of rows	1
Potentials	1

### Insulation characteristics

Overvoltage category	III
Degree of pollution	3

### Electrical properties

Rated surge voltage	8 kV
Maximum power dissipation for nominal condition	0.77 W

### Connection data

Number of connections per level	2
Nominal cross section	2.5 mm <sup>2</sup>

### 1 level

Connection method	Bolt connection
Stripping length	The stripping length depends on the specification provided by the cable lug manufacturer.
Connection in acc. with standard	IEC 60947-7-1
Nominal cross section	2.5 mm <sup>2</sup>

# RT 3 BU - Bolt connection terminal block



3049110

<https://www.phoenixcontact.com/us/products/3049110>

Nominal current	24 A
Maximum load current	24 A (with a 2.5 mm <sup>2</sup> conductor cross-section)
Nominal voltage	1000 V (Rated voltage for open disconnect point 500 V)

## Cable lug connection DIN 46234:1980-03

Connection in acc. with standard	DIN 46234:1980-03
Cross section	0.5 mm <sup>2</sup> ... 2.5 mm <sup>2</sup>
Cross section range AWG	20 ... 14 (converted acc. to IEC)
Hole diameter	3.2 mm
Width	6 mm
Bolt diameter	3 mm
Screw thread	M3
Tightening torque	0.6 ... 0.8 Nm
Connection in acc. with standard	DIN 46237:1970-07
Cross section	1 mm <sup>2</sup> ... 2.5 mm <sup>2</sup>
Cross section range AWG	18 ... 14 (converted acc. to IEC)
Hole diameter	3.2 mm
Width	6 mm
Bolt diameter	3 mm
Screw thread	M3
Tightening torque	0.6 ... 0.8 Nm
Identification color of ring cable lugs : red	1 mm <sup>2</sup>
Identification color of ring cable lugs : blue	2.5 mm <sup>2</sup>

## Ex data

### Rated data (ATEX/IECEx)

Identification	Ⓔ II 2 G Ex eb IIC Gb
Operating temperature range	-60 °C ... 110 °C
Ex-certified accessories	3049097 D-RT 3/5 0706647 TPNS-UK 3049819 BE-RT 3/5 1205053 SZS 0,6X3,5 3022276 CLIPFIX 35-5
List of bridges	Plug-in bridge / FBS 2-6 / 3030336 Plug-in bridge / FBS 3-6 / 3030242 Plug-in bridge / FBS 4-6 / 3030255 Plug-in bridge / FBS 5-6 / 3030349 Plug-in bridge / FBS 10-6 / 3030271 Plug-in bridge / FBS 20-6 / 3030365 Plug-in bridge / FBS 50-6 / 3032224
Bridge data	24 A (2.5 mm <sup>2</sup> )
Ex temperature increase	40 K (24 A / 2.5 mm <sup>2</sup> )
for bridging with bridge	550 V
- At bridging between non-adjacent terminal blocks	352 V

# RT 3 BU - Bolt connection terminal block



3049110

<https://www.phoenixcontact.com/us/products/3049110>

- At cut-to-length bridging with cover	275 V
- At cut-to-length bridging with partition plate	550 V
Rated insulation voltage	500 V
output	(Permanent)

## Ex level General

Rated voltage	550 V
Rated current	24 A
Maximum load current	24 A
Contact resistance	0.62 mΩ

## Ex connection data General

Torque range	0.6 Nm ... 0.8 Nm
Nominal cross section	2.5 mm <sup>2</sup>
Rated cross section AWG	14
Connection capacity rigid	0.1 mm <sup>2</sup> ... 2.5 mm <sup>2</sup>
Connection capacity AWG	26 ... 14
Connection capacity flexible	0.1 mm <sup>2</sup> ... 2.5 mm <sup>2</sup>
Connection capacity AWG	26 ... 14

## Dimensions

Width	12.3 mm
End cover width	2.2 mm
Height	66 mm
Depth on NS 35/7,5	51 mm
Depth on NS 35/15	58.5 mm

## Material specifications

Color	blue (RAL 5015)
Flammability rating according to UL 94	V0
Insulating material group	I
Insulating material	PA
Static insulating material application in cold	-60 °C
Temperature index of insulation material (DIN EN 60216-1 (VDE 0304-21))	130 °C
Relative insulation material temperature index (Elec., UL 746 B)	130 °C
Fire protection for rail vehicles (DIN EN 45545-2) R22	HL 1 - HL 3
Fire protection for rail vehicles (DIN EN 45545-2) R23	HL 1 - HL 3
Fire protection for rail vehicles (DIN EN 45545-2) R24	HL 1 - HL 3
Fire protection for rail vehicles (DIN EN 45545-2) R26	HL 1 - HL 3
Calorimetric heat release NFPA 130 (ASTM E 1354)	28 MJ/kg
Surface flammability NFPA 130 (ASTM E 162)	passed
Specific optical density of smoke NFPA 130 (ASTM E 662)	passed
Smoke gas toxicity NFPA 130 (SMP 800C)	passed

## Electrical tests

### Surge voltage test

Test voltage setpoint	9.8 kV
Result	Test passed

### Temperature-rise test

Requirement temperature-rise test	Increase in temperature $\leq 45$ K
Result	Test passed
	Test passed
Short-time withstand current 2.5 mm <sup>2</sup>	0.3 kA
Result	Test passed

### Power-frequency withstand voltage

Test voltage setpoint	2.2 kV
Result	Test passed

## Mechanical properties

### Mechanical data

Open side panel	Yes
-----------------	-----

## Mechanical tests

### Mechanical strength

Result	Test passed
--------	-------------

### Attachment on the carrier

DIN rail/fixing support	NS 32/NS 35
Test force setpoint	1 N
Result	Test passed

## Environmental and real-life conditions

### Needle-flame test

Time of exposure	30 s
Result	Test passed

### Oscillation/broadband noise

Specification	DIN EN 50155 (VDE 0115-200):2008-03
Spectrum	Long life test category 1, class B, body mounted
Frequency	$f_1 = 5$ Hz to $f_2 = 150$ Hz
ASD level	1.857 (m/s <sup>2</sup> )/Hz
Acceleration	0.8g
Test duration per axis	5 h
Test directions	X-, Y- and Z-axis
Result	Test passed

# RT 3 BU - Bolt connection terminal block



3049110

<https://www.phoenixcontact.com/us/products/3049110>

## Shocks

Specification	DIN EN 50155 (VDE 0115-200):2008-03
Pulse shape	Half-sine
Acceleration	5g
Shock duration	30 ms
Number of shocks per direction	3
Test directions	X-, Y- and Z-axis (pos. and neg.)
Result	Test passed

## Ambient conditions

Ambient temperature (operation)	-60 °C ... 110 °C (Operating temperature range incl. self-heating; for max. short-term operating temperature, see RTI Elec.)
Ambient temperature (storage/transport)	-25 °C ... 60 °C (for a short time, not exceeding 24 h, -60 °C to +70 °C)
Ambient temperature (assembly)	-5 °C ... 70 °C
Ambient temperature (actuation)	-5 °C ... 70 °C
Permissible humidity (operation)	20 % ... 90 %
Permissible humidity (storage/transport)	30 % ... 70 %

## Standards and regulations

Connection in acc. with standard	IEC 60947-7-1
----------------------------------	---------------

## Mounting

Mounting type	NS 35/7,5
	NS 35/15

# RT 3 BU - Bolt connection terminal block



3049110

<https://www.phoenixcontact.com/us/products/3049110>

## Drawings

### Circuit diagram



# RT 3 BU - Bolt connection terminal block





3049110


<https://www.phoenixcontact.com/us/products/3049110>


## Approvals


To download certificates, visit the product detail page: <https://www.phoenixcontact.com/us/products/3049110>


	<b>IECEE CB Scheme</b> Approval ID: DE1-62814
---	--

	<b>VDE approval of drawings</b> Approval ID: 40022553			
	Nominal voltage $U_N$	Nominal current $I_N$	Cross section AWG	Cross section $\text{mm}^2$
keine				
	1000 V	24 A	-	0.14 - 2.5

	<b>cULus Recognized</b> Approval ID: E60425			
	Nominal voltage $U_N$	Nominal current $I_N$	Cross section AWG	Cross section $\text{mm}^2$
B				
	600 V	30 A	-	-
C				
	600 V	30 A	-	-

	<b>EAC Ex</b> Approval ID: KZ 7500525010101950
---	---

	<b>IECEX</b> Approval ID: IECEXPTB08.0063U			
	Nominal voltage $U_N$	Nominal current $I_N$	Cross section AWG	Cross section $\text{mm}^2$
keine				
	550 V	24 A	-	0.1 - 2.5

	<b>ATEX</b> Approval ID: PTB09ATEX1003U			
	Nominal voltage $U_N$	Nominal current $I_N$	Cross section AWG	Cross section $\text{mm}^2$
keine				
	550 V	24 A	-	0.1 - 2.5

	<b>CCC</b> Approval ID: 2020322313000627
---	---

# RT 3 BU - Bolt connection terminal block



3049110

<https://www.phoenixcontact.com/us/products/3049110>



**UKCA-EX**

Approval ID: CSAE 22UKEX1085U

# RT 3 BU - Bolt connection terminal block



3049110

<https://www.phoenixcontact.com/us/products/3049110>

## Classifications

### ECLASS

ECLASS-13.0	27250101
ECLASS-15.0	27250101

### ETIM

ETIM 10.0	EC000897
-----------	----------

### UNSPSC

UNSPSC 21.0	39121400
-------------	----------

# RT 3 BU - Bolt connection terminal block



3049110

<https://www.phoenixcontact.com/us/products/3049110>

## Environmental product compliance

### EU RoHS

Fulfills EU RoHS substance requirements	Yes, No exemptions
---	--------------------

### China RoHS

Environment friendly use period (EFUP)	EFUP-E
	No hazardous substances above the limits

### EU REACH SVHC

REACH candidate substance (CAS No.)	No substance above 0.1 wt%
-------------------------------------	----------------------------

Phoenix Contact 2026 © - all rights reserved  
<https://www.phoenixcontact.com>

Phoenix Contact USA  
586 Fulling Mill Road  
Middletown, PA 17057, United States  
(+717) 944-1300  
[info@phoenixcon.com](mailto:info@phoenixcon.com)