

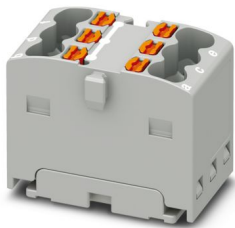
PTFIX 6X1,5 GY - Distribution block



3002757

<https://www.phoenixcontact.com/us/products/3002757>

Please be informed that the data shown in this PDF document is generated from our online catalog. Please find the complete data in the user documentation. Our general terms of use for downloads are valid.



Distribution block, Basic terminal block without protective conductor function, nom. voltage: 450 V, nominal current: 17.5 A, number of connections: 6, connection method: Push-in connection, cross section: 0.14 mm² - 2.5 mm², mounting type: for snapping onto a DIN rail adapter, Direct mounting with flange, Free-hanging, color: gray

Your advantages

- Space-saving, thanks to the compact design
- Flexible use, thanks to direct mounting with flange covers from accessories
- Space-saving potential distribution, thanks to compact micro potential distributors
- Convenient test options, thanks to test openings at every terminal point
- Clear arrangement thanks to marking of all terminal points

Commercial data

| | |
|--------------------------------------|---------------|
| Item number | 3002757 |
| Packing unit | 20 pc |
| Minimum order quantity | 20 pc |
| Sales key | BE09 |
| Product key | BEA113 |
| GTIN | 4055626432403 |
| Weight per piece (including packing) | 5.735 g |
| Weight per piece (excluding packing) | 5.4 g |
| Customs tariff number | 85369010 |
| Country of origin | PL |

PTFIX 6X1,5 GY - Distribution block



3002757

<https://www.phoenixcontact.com/us/products/3002757>

Technical data

Notes

| | |
|--------------------|--|
| Notes on operation | the blocks can be bridged with one another via the conductor shaft, for corresponding plug-in bridges, see accessories |
|--------------------|--|

Product properties

| | |
|-----------------------|----------------------------|
| Product type | Distributor terminal block |
| Number of connections | 6 |
| Number of rows | 1 |
| Potentials | 1 |

Insulation characteristics

| | |
|----------------------|-----|
| Overvoltage category | III |
| Degree of pollution | 3 |

Electrical properties

| | |
|---|--------|
| Rated surge voltage | 6 kV |
| Maximum power dissipation for nominal condition | 0.56 W |

Connection data

| | |
|---|--|
| Number of connections per level | 6 |
| Nominal cross section | 1.5 mm ² |
| Rated cross section AWG | 14 |
| Connection method | Push-in connection |
| Stripping length | 8 mm ... 10 mm |
| Internal cylindrical gage | A1 / B1 |
| Connection in acc. with standard | IEC 60998-2-2 |
| Conductor cross-section rigid | 0.14 mm ² ... 2.5 mm ² |
| Cross section AWG | 26 ... 14 (converted acc. to IEC) |
| Conductor cross-section flexible | 0.14 mm ² ... 2.5 mm ² |
| Conductor cross-section, flexible [AWG] | 26 ... 14 (converted acc. to IEC) |
| Conductor cross-section flexible (ferrule without plastic sleeve) | 0.14 mm ² ... 1.5 mm ² |
| Flexible conductor cross-section (ferrule with plastic sleeve) | 0.14 mm ² ... 1.5 mm ² |
| Nominal current | 17.5 A |
| Maximum load current | 22 A |
| Maximum total current | 26 A |
| Nominal voltage | 450 V |

Connection cross sections directly pluggable

| | |
|---|--|
| Conductor cross-section rigid | 0.34 mm ² ... 2.5 mm ² |
| Conductor cross-section, rigid [AWG] | 26 ... 14 (converted acc. to IEC) |
| Conductor cross-section flexible (ferrule without plastic sleeve) | 0.34 mm ² ... 1.5 mm ² |
| Flexible conductor cross-section (ferrule with plastic sleeve) | 0.34 mm ² ... 1.5 mm ² |

PTFIX 6X1,5 GY - Distribution block



3002757

<https://www.phoenixcontact.com/us/products/3002757>

Dimensions

| | |
|--------|---------|
| Width | 12.5 mm |
| Height | 21.6 mm |
| Depth | 17.7 mm |

Material specifications

| | |
|--|-----------------|
| Color | gray (RAL 7042) |
| Flammability rating according to UL 94 | V0 |
| Insulating material group | I |
| Insulating material | PA |
| Static insulating material application in cold | -60 °C |
| Relative insulation material temperature index (Elec., UL 746 B) | 130 °C |
| Fire protection for rail vehicles (DIN EN 45545-2) R22 | HL 1 - HL 3 |
| Fire protection for rail vehicles (DIN EN 45545-2) R23 | HL 1 - HL 3 |
| Fire protection for rail vehicles (DIN EN 45545-2) R24 | HL 1 - HL 3 |
| Fire protection for rail vehicles (DIN EN 45545-2) R26 | HL 1 - HL 3 |
| Surface flammability NFPA 130 (ASTM E 162) | passed |
| Specific optical density of smoke NFPA 130 (ASTM E 662) | passed |
| Smoke gas toxicity NFPA 130 (SMP 800C) | passed |

Mechanical properties

Mechanical data

| | |
|-----------------|----|
| Open side panel | No |
|-----------------|----|

Mechanical tests

Attachment on the carrier

| | |
|-------------------------|---|
| DIN rail/fixing support | NS 35/NS 15 |
| Result | Test passed |
| Note | <p>When aligning several blocks, it is recommended to either place a DIN rail adapter underneath the connection point or a flange element between the blocks.</p> <p>For versions with 6 or 7 connections, it is enough to place one DIN rail adapter centrally per block and place flange elements after every other block.</p> <p>When using the DIN rail adapter PTFIX-NS35, an aligned block must not protrude by more than a half.</p> |

Environmental and real-life conditions

Oscillation/broadband noise

| | |
|---------------|--|
| Specification | DIN EN 50155 (VDE 0115-200):2018-05 |
| Spectrum | Long life test category 2, bogie-mounted |
| Frequency | $f_1 = 5 \text{ Hz}$ to $f_2 = 250 \text{ Hz}$ |
| ASD level | $6.12 \text{ (m/s}^2\text{)}^2\text{/Hz}$ |
| Acceleration | 3.12g |

PTFIX 6X1,5 GY - Distribution block



3002757

<https://www.phoenixcontact.com/us/products/3002757>

| | |
|------------------------|-------------------|
| Test duration per axis | 5 h |
| Test directions | X-, Y- and Z-axis |
| Result | Test passed |

Shocks

| | |
|--------------------------------|-------------------------------------|
| Specification | DIN EN 50155 (VDE 0115-200):2018-05 |
| Pulse shape | Half-sine |
| Acceleration | 30g |
| Shock duration | 18 ms |
| Number of shocks per direction | 3 |
| Test directions | X-, Y- and Z-axis (pos. and neg.) |
| Result | Test passed |

Ambient conditions

| | |
|--|--|
| Ambient temperature (operation) | -60 °C ... 110 °C (Operating temperature range incl. self-heating; for max. short-term operating temperature, see RTI Elec.) |
| Ambient temperature (storage/transport) | -25 °C ... 60 °C (for a short time, not exceeding 24 h, -60 °C to +70 °C) |
| Ambient temperature (assembly) | -5 °C ... 70 °C |
| Ambient temperature (actuation) | -5 °C ... 70 °C |
| Permissible humidity (operation) | 20 % ... 90 % |
| Permissible humidity (storage/transport) | 30 % ... 70 % |

Standards and regulations

| | |
|----------------------------------|---------------|
| Connection in acc. with standard | IEC 60998-2-2 |
|----------------------------------|---------------|

Mounting

| | |
|---------------|--------------------------------------|
| Mounting type | for snapping onto a DIN rail adapter |
| | Direct mounting with flange |
| | Free-hanging |

PTFIX 6X1,5 GY - Distribution block

3002757

<https://www.phoenixcontact.com/us/products/3002757>



Drawings

Circuit diagram



3002757

<https://www.phoenixcontact.com/us/products/3002757>

Graphic



PTFIX 6X1,5 GY - Distribution block



3002757

<https://www.phoenixcontact.com/us/products/3002757>

Approvals

To download certificates, visit the product detail page: <https://www.phoenixcontact.com/us/products/3002757>

| DNV Approval ID: TAE00002TT-05 | | | | |
|--|-----------------------|-----------------------|-------------------|----------------------|
| | Nominal voltage U_N | Nominal current I_N | Cross section AWG | Cross section mm^2 |
| keine | | | | |
| | 500 V | 24 A | - | - |

| CSA Approval ID: 13631 | | | | |
|----------------------------------|-----------------------|-----------------------|-------------------|----------------------|
| | Nominal voltage U_N | Nominal current I_N | Cross section AWG | Cross section mm^2 |
| B | | | | |
| | 300 V | 20 A | 26 - 12 | - |
| C | | | | |
| | 150 V | 20 A | 26 - 12 | - |
| D | | | | |
| | 300 V | 10 A | 26 - 12 | - |

| IECEE CB Scheme Approval ID: DE1-63083 | | | | |
|--|-----------------------|-----------------------|-------------------|----------------------|
| | Nominal voltage U_N | Nominal current I_N | Cross section AWG | Cross section mm^2 |
| keine | | | | |
| | 450 V | 17.5 A | - | - 1.5 |

| EAC Approval ID: RU C-DE.BL08.B.00644 | | | | |
|---|--|--|--|--|
|---|--|--|--|--|

| VDE Zeichengenehmigung Approval ID: 40047798 | | | | |
|--|--|--|--|--|
|--|--|--|--|--|

| cULus Recognized Approval ID: E60425 | | | | |
|--|-----------------------|-----------------------|-------------------|----------------------|
| | Nominal voltage U_N | Nominal current I_N | Cross section AWG | Cross section mm^2 |
| B | | | | |
| | 300 V | 20 A | 26 - 12 | - |
| C | | | | |
| | 150 V | 20 A | 26 - 12 | - |
| F | | | | |
| | 500 V | 20 A | 26 - 12 | - |

PTFIX 6X1,5 GY - Distribution block



3002757

<https://www.phoenixcontact.com/us/products/3002757>

| | | | | |
|---|-------|------|---------|---|
| D | | | | |
| | 300 V | 10 A | 26 - 12 | - |



EAC

Approval ID: KZ7500651131219505

PTFIX 6X1,5 GY - Distribution block



3002757

<https://www.phoenixcontact.com/us/products/3002757>

Classifications

ECLASS

| | |
|-------------|----------|
| ECLASS-13.0 | 27250118 |
| ECLASS-15.0 | 27250118 |

ETIM

| | |
|-----------|----------|
| ETIM 10.0 | EC000897 |
|-----------|----------|

UNSPSC

| | |
|-------------|----------|
| UNSPSC 21.0 | 39121400 |
|-------------|----------|

PTFIX 6X1,5 GY - Distribution block



3002757

<https://www.phoenixcontact.com/us/products/3002757>

Environmental product compliance

EU RoHS

| | |
|---|--------------------|
| Fulfills EU RoHS substance requirements | Yes, No exemptions |
|---|--------------------|

China RoHS

| | |
|--|--|
| Environment friendly use period (EFUP) | EFUP-E |
| | No hazardous substances above the limits |

EU REACH SVHC

| | |
|-------------------------------------|----------------------------|
| REACH candidate substance (CAS No.) | No substance above 0.1 wt% |
|-------------------------------------|----------------------------|

Phoenix Contact 2026 © - all rights reserved
<https://www.phoenixcontact.com>

Phoenix Contact USA
586 Fulling Mill Road
Middletown, PA 17057, United States
(+717) 944-1300
info@phoenixcon.com