

EMG 17-OV- 24DC/240AC/3 - Solid-state relay module



2954235

<https://www.phoenixcontact.com/us/products/2954235>

Please be informed that the data shown in this PDF document is generated from our online catalog. Please find the complete data in the user documentation. Our general terms of use for downloads are valid.



Power solid-state relay, with LED and protective circuit in input and output circuits, input: 24 V DC, output: 48 - 280 V AC/max. 3 A

The figure shows version EMG 17-OV, with AC voltage output, max. 3 A

Commercial data

| | |
|--------------------------------------|---------------|
| Item number | 2954235 |
| Packing unit | 10 pc |
| Minimum order quantity | 1 pc |
| Sales key | C460 |
| Product key | DK61C1 |
| GTIN | 4017918084899 |
| Weight per piece (including packing) | 85.92 g |
| Weight per piece (excluding packing) | 81.36 g |
| Customs tariff number | 85364190 |
| Country of origin | DE |

Technical data

Notes

Utilization restriction

| | |
|----------|---|
| EMC note | EMC: class A product, see manufacturer's declaration in the download area |
|----------|---|

Product properties

| | |
|----------------|--------------------------|
| Product type | Solid-state relay module |
| Application | Output function |
| Operating mode | 100% operating factor |

Insulation characteristics

| | |
|----------------------|------------------|
| Insulation | Basic insulation |
| Overtoltage category | III |
| Pollution degree | 2 |

Data management status

| | |
|------------------------------|------------|
| Date of last data management | 15.04.2026 |
|------------------------------|------------|

Electrical properties

| | |
|-----------------------------|--------------------------|
| Test voltage (Input/output) | 3.5 kV AC (Input/output) |
|-----------------------------|--------------------------|

Input data

| | |
|--|--|
| Nominal input voltage U_N | 24 V DC |
| Input voltage range in reference to U_N | 0.8 ... 1.2 |
| Input voltage range | 19.2 V DC ... 28.8 V DC |
| Switching threshold "0" signal in reference to U_N | ≤ 0.4 |
| Switching threshold "1" signal in reference to U_N | ≥ 0.8 |
| Typical input current at U_N | 3.6 mA |
| Typical response time | 10 ms |
| Typical turn-off time | 10 ms |
| Operating voltage display | Yellow LED |
| Protective circuit | Reverse polarity protection; Polarity protection diode Surge protection; Varistor |
| Transmission frequency | 25 Hz |

Output data

| | |
|-----------------------------|--|
| Contact switching type | 1 N/O contact |
| Design of digital output | electronic |
| Output nominal voltage | 240 V AC |
| Output voltage range | 48 V AC ... 280 V AC (50 Hz ... 60 Hz) |
| Limiting continuous current | 3 A (see derating curve) |
| Min. load current | 50 mA |

EMG 17-OV- 24DC/240AC/3 - Solid-state relay module



2954235

<https://www.phoenixcontact.com/us/products/2954235>

| | |
|--|---|
| Leakage current | 4 mA (in off state) |
| Surge current | 160 A (t = 10 ms) |
| Phase angle cos phi min | 0.5 |
| Max. load value | 128 A ² s (I ² x t where t = 10 ms) |
| Peak offstate voltage | 600 V (Periodic peak reverse voltage) |
| Voltage drop at max. limiting continuous current | ≤ 1 V |
| Output circuit | 2-conductor, floating |
| Protective circuit | RC element; RC element Surge protection; Varistor |

Connection data

Input side

| | |
|----------------------------------|---|
| Connection method | Screw connection |
| Stripping length | 8 mm |
| Screw thread | M3 |
| Conductor cross-section rigid | 0.2 mm ² ... 4 mm ² |
| Conductor cross-section flexible | 0.2 mm ² ... 2.5 mm ² |
| Conductor cross-section AWG | 24 ... 12 |
| Tightening torque | 0.5 Nm ... 0.6 Nm |

Output side

| | |
|----------------------------------|---|
| Connection method | Screw connection |
| Stripping length | 8 mm |
| Screw thread | M3 |
| Conductor cross-section rigid | 0.2 mm ² ... 4 mm ² |
| Conductor cross-section flexible | 0.2 mm ² ... 2.5 mm ² |
| Conductor cross-section AWG | 24 ... 12 |
| Tightening torque | 0.5 Nm ... 0.6 Nm |

Dimensions

Item dimensions

| | |
|--------|---------|
| Width | 17.5 mm |
| Height | 75 mm |
| Depth | 102 mm |

Material specifications

| | |
|--|------------------|
| Color | green (RAL 6021) |
| Flammability rating according to UL 94 | V0 |

Environmental and real-life conditions

Ambient conditions

| | |
|---------------------------------|------------------|
| Degree of protection | IP20 |
| Ambient temperature (operation) | -20 °C ... 60 °C |

EMG 17-OV- 24DC/240AC/3 - Solid-state relay module



2954235

<https://www.phoenixcontact.com/us/products/2954235>

| | |
|---|------------------|
| Ambient temperature (storage/transport) | -20 °C ... 70 °C |
|---|------------------|

Standards and regulations

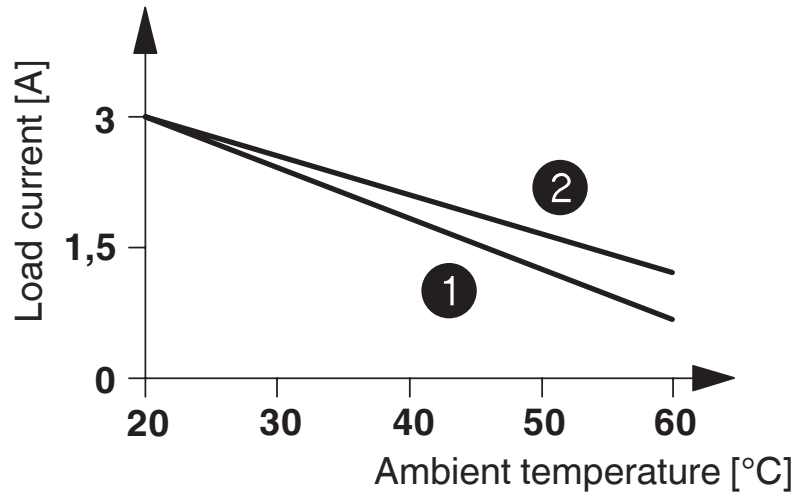
| | |
|-----------------------|-----------|
| Standards/regulations | IEC 60664 |
| | EN 50178 |

Mounting

| | |
|-------------------|---------------------------|
| Mounting type | DIN rail mounting |
| Assembly note | in rows with zero spacing |
| Mounting position | horizontal |

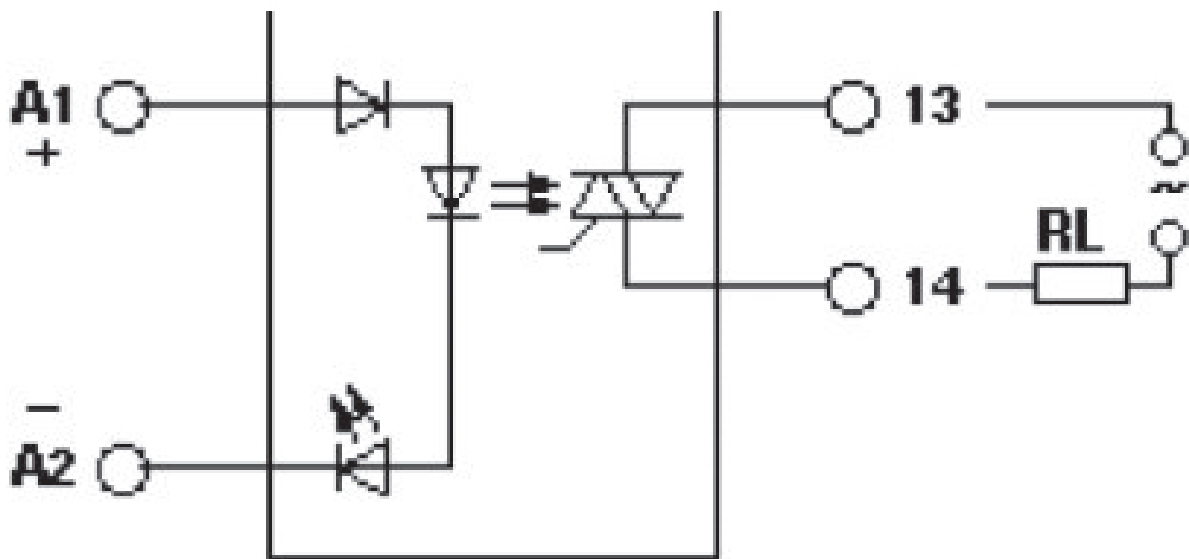
Drawings

Diagram



- ① In rows with zero spacing
- ② stand-alone device

Circuit diagram



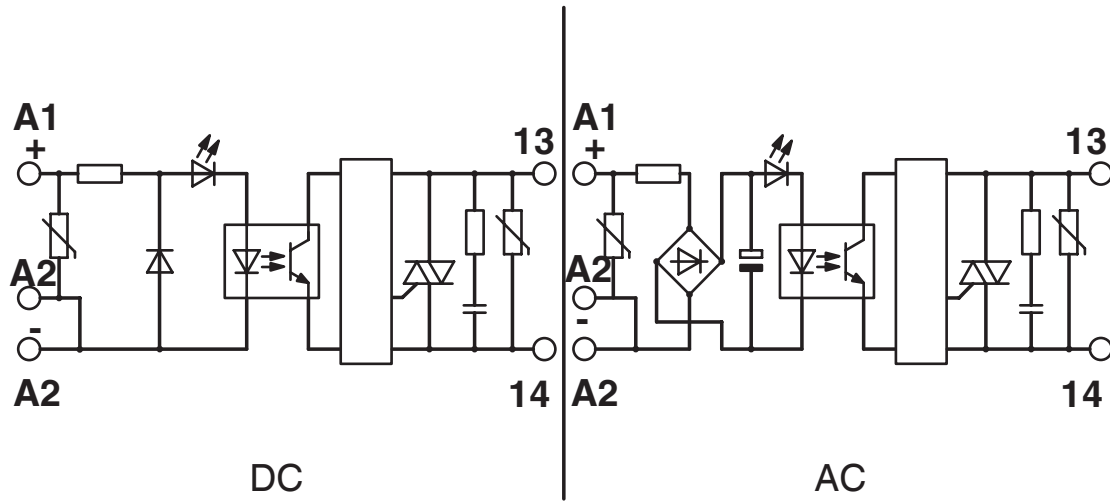
EMG 17-OV- 24DC/240AC/3 - Solid-state relay module



2954235

<https://www.phoenixcontact.com/us/products/2954235>

Circuit diagram



EMG 17-OV- 24DC/240AC/3 - Solid-state relay module



2954235

<https://www.phoenixcontact.com/us/products/2954235>

Approvals

To download certificates, visit the product detail page: <https://www.phoenixcontact.com/us/products/2954235>



EAC

Approval ID: RU*C-DE.*08.B.00010

2954235

<https://www.phoenixcontact.com/us/products/2954235>

Classifications

ECLASS

| | |
|-------------|----------|
| ECLASS-13.0 | 27371604 |
| ECLASS-15.0 | 27371604 |

ETIM

| | |
|-----------|----------|
| ETIM 10.0 | EC001504 |
|-----------|----------|

UNSPSC

| | |
|-------------|----------|
| UNSPSC 21.0 | 39122300 |
|-------------|----------|

2954235

<https://www.phoenixcontact.com/us/products/2954235>

Environmental product compliance

EU RoHS

| | |
|---|--------------------|
| Fulfills EU RoHS substance requirements | Yes |
| Exemption | 6(c), 7(a), 7(c)-I |

China RoHS

| | |
|--|---|
| Environment friendly use period (EFUP) | EFUP-50 |
| | An article-related China RoHS declaration table can be found in the download area for the respective article under "Manufacturer declaration". For all articles with EFUP-E, no China RoHS declaration table issued and required. |

EU REACH SVHC

| | |
|-------------------------------------|--------------------------------------|
| REACH candidate substance (CAS No.) | Lead(CAS: 7439-92-1) |
| SCIP | 0a0268b6-de29-4425-ac48-9d044af204eb |

EF3.1 Climate Change

| | |
|---------|---------------|
| CO2e kg | 0.459 kg CO2e |
|---------|---------------|

Phoenix Contact 2026 © - all rights reserved
<https://www.phoenixcontact.com>

Phoenix Contact USA
586 Fulling Mill Road
Middletown, PA 17057, United States
(+717) 944-1300
info@phoenixcon.com