

PR2-RSC3-LV-120AC/4X21AU - Relay module



2834740

<https://www.phoenixcontact.com/us/products/2834740>

Please be informed that the data shown in this PDF document is generated from our online catalog. Please find the complete data in the user documentation. Our general terms of use for downloads are valid.



Pre-assembled relay modules with screw connection, consisting of: relay base, industrial relay with integrated LED and engage/disengage manual actuate lever, varistor module, and retaining bracket. Input voltage: 120 V AC, 4 changeover contacts with gold-plated contacts, 5 A

The figure shows the 24 V DC version

Your advantages

- Relay with detectable manual operation and status LED
- With DC types, freewheeling diode is integrated in relay
- Mechanical switch position indicator
- Logical contact arrangement thanks to 1/3-level relay base
- 4-changeover contact types with multi-layer gold contacts

Commercial data

Item number	2834740
Packing unit	1 pc
Note	Made to order (non-returnable)
Sales key	C463
Product key	DK631H
GTIN	4046356044561
Weight per piece (including packing)	124.1 g
Weight per piece (excluding packing)	117.58 g
Customs tariff number	85364900
Country of origin	CN

PR2-RSC3-LV-120AC/4X21AU - Relay module



2834740

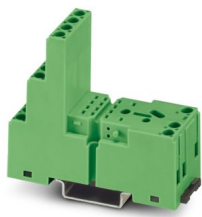
<https://www.phoenixcontact.com/us/products/2834740>

Set consists of

PR2-BSC3/4X21 - Relay base

2833576

<https://www.phoenixcontact.com/us/products/2833576>



Relay base PR2-B, for industrial relay REL-IR with 2 or 4 changeover contacts, 1/3-level design, screw connection, plug-in option for input/interference suppression modules, for mounting on NS 35/7,5

REL-IR/L-120AC/4X21AU - Single relay

2834135

<https://www.phoenixcontact.com/us/products/2834135>



Plug-in industrial relay with power contacts and additional hard gold plating, 4 changeover contacts, test button, status LED, mechanical switching position indicator, coil voltage: 120 V AC

PR2-RSC3-LV-120AC/4X21AU - Relay module

2834740

<https://www.phoenixcontact.com/us/products/2834740>



V-120-230UC - Plug-in module

2833880

<https://www.phoenixcontact.com/us/products/2833880>



Plug-in module, with varistor, input voltage: 120 ... 230 V AC/DC $\pm 20\%$

EL2-P35 - Retaining bracket

2833592

<https://www.phoenixcontact.com/us/products/2833592>



Relay retaining bracket, with eject function and integrated equipment marking area (8 x 25 mm), to suit relay base PR2, for 35 mm high industrial relay

PR2-RSC3-LV-120AC/4X21AU - Relay module



2834740

<https://www.phoenixcontact.com/us/products/2834740>

MP 2 - Marker labels

2833644

<https://www.phoenixcontact.com/us/products/2833644>

Equipment marker, labeling surface 9 x 25 mm



PR2-RSC3-LV-120AC/4X21AU - Relay module



2834740

<https://www.phoenixcontact.com/us/products/2834740>

Technical data

Product properties

Product type	Relay Module
Application	Universal
Operating mode	100% operating factor
Mechanical service life	5x 10 ⁷ cycles

Insulation characteristics

Overvoltage category	II
Pollution degree	2

Data management status

Date of last data management	12.09.2025
------------------------------	------------

Electrical properties

Service life electrical	see diagram
Maximum power dissipation for nominal condition	1.32 W
Test voltage (Winding/contact)	2 kV AC (50 Hz, 1 min., winding/contact)
Test voltage (Contact/contact)	2 kV AC (50 Hz, 1 min., contact/contact)

Input data

Coil side

Nominal input voltage U _N	120 V AC
Input voltage range	93.6 V AC ... 180 V AC
Drive and function	monostable
Typical input current at U _N	11 mA (at 50 Hz) 9 mA (At 60 Hz)
Typical response time	4 ms ... 10 ms
Typical release time range	3 ms ... 12 ms
Protective circuit	Varistor
Operating voltage display	LED red

Output data

Switching

Contact switching type	4 changeover contacts
Type of switch contact	Single contact
Contact material	AgNi, hard gold-plated
Maximum switching voltage	250 V AC/DC
Minimum switching voltage	1 V
Limiting continuous current	5 A
Maximum inrush current	12 A (15 ms)
Min. switching current	1 mA

PR2-RSC3-LV-120AC/4X21AU - Relay module



2834740

<https://www.phoenixcontact.com/us/products/2834740>

Interrupting rating (ohmic load) max.	120 W (at 24 V DC)
	100 W (at 48 V DC)
	78 W (at 60 V DC)
	55 W (at 110 V DC)
	80 W (at 220 V DC)
	1250 VA (for 250 V AC)

Connection data

Coil side

Connection method	Screw connection
Stripping length	7 mm
Conductor cross-section rigid	0.14 mm ² ... 2.5 mm ²
Conductor cross-section flexible	0.14 mm ² ... 2.5 mm ²
Conductor cross-section AWG	26 ... 14

Contact side

Connection method	Screw connection
Stripping length	7 mm
Conductor cross-section rigid	0.14 mm ² ... 2.5 mm ²
Conductor cross-section flexible	0.14 mm ² ... 2.5 mm ²
Conductor cross-section AWG	26 ... 14

Dimensions

Width	27 mm
Height	78.5 mm
Depth	86 mm

Material specifications

Color	green (RAL 6021)
-------	------------------

Environmental and real-life conditions

Ambient conditions

Degree of protection (Relay)	RT I (Relay)
Ambient temperature (operation)	-25 °C ... 60 °C
Ambient temperature (storage/transport)	-25 °C ... 70 °C

Standards and regulations

Standards/regulations	IEC 60664
	EN 50178

Mounting

Mounting type	DIN rail mounting
Assembly note	in rows with zero spacing
Mounting position	any

Drawings

Diagram

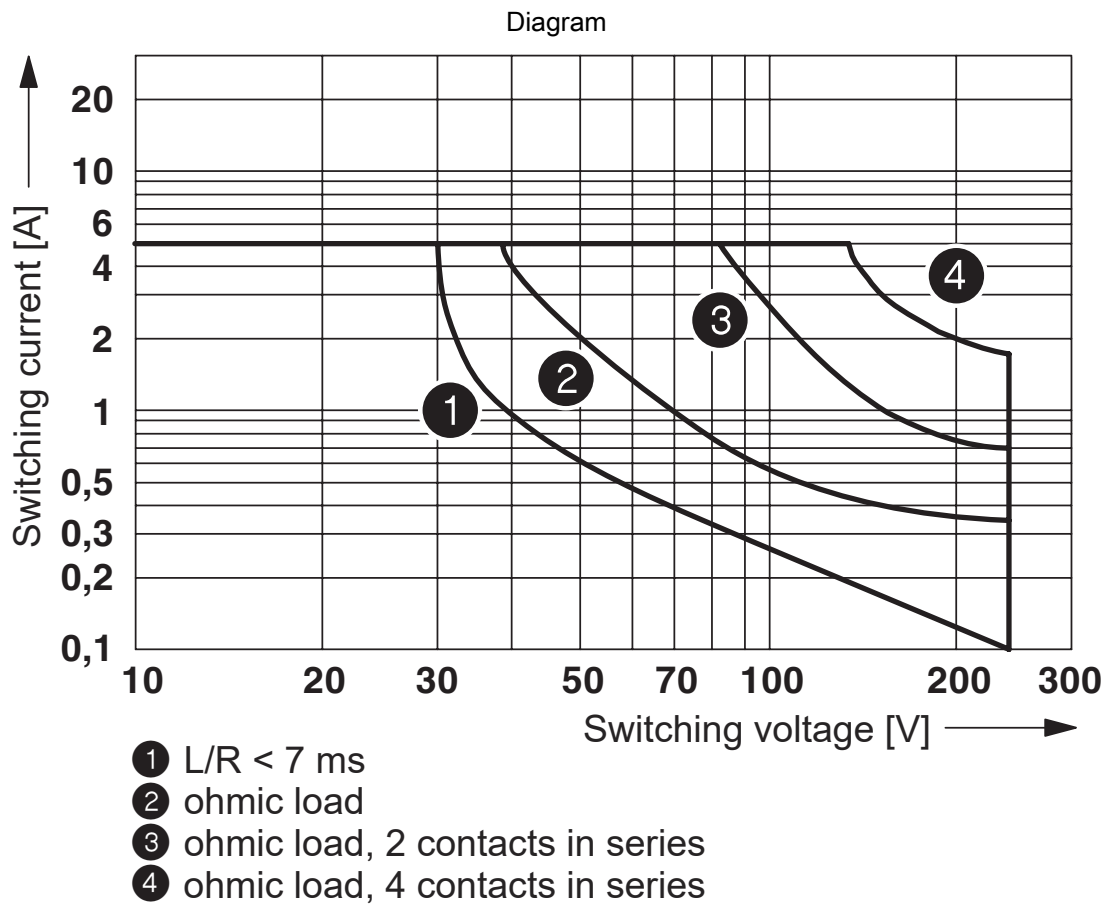


Operating voltage range of relay $T_u=T_{coil}$

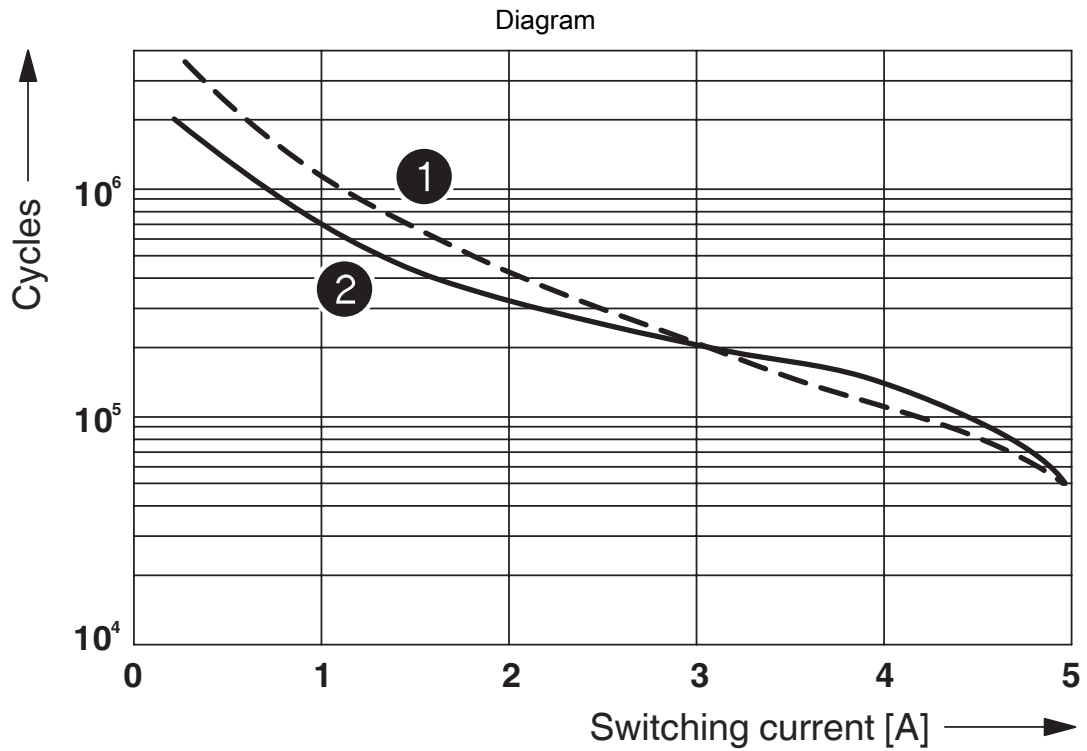
Diagram



AC interrupting rating



DC interrupting rating



- ① 250 V AC, ohmic load
- ② 30 V DC, ohmic load

Electrical service life

PR2-RSC3-LV-120AC/4X21AU - Relay module



2834740

<https://www.phoenixcontact.com/us/products/2834740>

Circuit diagram



PR2-RSC3-LV-120AC/4X21AU - Relay module



2834740

<https://www.phoenixcontact.com/us/products/2834740>

Classifications

UNSPSC

UNSPSC 21.0	39122334
-------------	----------

PR2-RSC3-LV-120AC/4X21AU - Relay module



2834740

<https://www.phoenixcontact.com/us/products/2834740>

Environmental product compliance

EU RoHS

Fulfills EU RoHS substance requirements	Yes, No exemptions
---	--------------------

China RoHS

Environment friendly use period (EFUP)	EFUP-E
	No hazardous substances above the limits

EU REACH SVHC

REACH candidate substance (CAS No.)	No substance above 0.1 wt%
-------------------------------------	----------------------------

Phoenix Contact 2026 © - all rights reserved
<https://www.phoenixcontact.com>

Phoenix Contact USA
586 Fulling Mill Road
Middletown, PA 17057, United States
(+717) 944-1300
info@phoenixcon.com