

# ME 6,2 TBUS-2 1,5/5-ST-3,81 GY - DIN rail bus connector

2695439

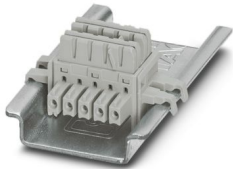
<https://www.phoenixcontact.com/us/products/2695439>

Please be informed that the data shown in this PDF document is generated from our online catalog. Please find the complete data in the user documentation. Our general terms of use for downloads are valid.



RAIL

DIN rail bus connector (TBUS), 5-pos., for bridging the supply voltage, can be snapped onto NS 35/... DIN rail in accordance with EN 60715



## Your advantages

- Space-saving installation under the housing in the DIN rail
- Contact design enables electronics modules to be easily snapped on
- Power supply and communication without additional wiring
- Parallel and serial contacts for efficient signal and data transmission
- Fast module-to-module communication without additional wiring effort

## Commercial data

Item number	2695439
Packing unit	10 pc
Minimum order quantity	10 pc
Sales key	AC08
Product key	ACHACA
GTIN	4046356447430
Weight per piece (including packing)	6.112 g
Weight per piece (excluding packing)	6 g
Customs tariff number	85366990
Country of origin	DE

# ME 6,2 TBUS-2 1,5/5-ST-3,81 GY - DIN rail bus connector



2695439

<https://www.phoenixcontact.com/us/products/2695439>

## Technical data

### Notes

Recommendation	Material of contact pads for bus connector, galvanic gold (hard gold)
----------------	---

### Product properties

Product type	DIN rail bus connector
Product family	TBUS5..2-6,2..
Pitch	3.81 mm
Pin layout	Linear pinning

### Electrical properties

#### Properties

Nominal current $I_N$	8 A
Nominal voltage $U_N$	125 V
Contact resistance	2.17 mΩ
Rated voltage (III/3)	125 V
Rated surge voltage (III/3)	2.5 kV
Rated voltage (III/2)	125 V
Rated surge voltage (III/2)	2.5 kV

### Material specifications

#### Material data - contact

Note	WEEE/RoHS-compliant, free of whiskers according to IEC 60068-2-82/JEDEC JESD 201
Contact material	Cu alloy
Surface characteristics	gold-plated

#### Material data - housing

Color (Housing)	gray (7042)
Insulating material	PBT
Insulating material group	I
CTI according to IEC 60112	600
Flammability rating according to UL 94	V0
Temperature for the ball pressure test according to EN 60695-10-2	125 °C

#### material specifications - connector

Color ()	()
----------	----

### Dimensions

Pitch	3.81 mm
Width [w]	19.25 mm

# ME 6,2 TBUS-2 1,5/5-ST-3,81 GY - DIN rail bus connector



2695439

<https://www.phoenixcontact.com/us/products/2695439>

Height [h]	36.3 mm
Length [l]	17.65 mm

## Mounting

Mounting type	DIN rail mounting
Pin layout	Linear pinning

## Mechanical tests

### Insertion and withdrawal forces

Result	Test passed
No. of cycles	25
Insertion strength per pos. approx.	2.18 N
Withdraw strength per pos. approx.	1.38 N

### Polarization and coding

Specification	IEC 60512-13-5:2006-02
Result	Test passed

### Visual inspection

Specification	IEC 60512-1-1:2002-02
Result	Test passed

### Dimension check

Specification	IEC 60512-1-2:2002-02
Result	Test passed

## Environmental and real-life conditions

### Durability test

Specification	IEC 60512-9-1:2010-03
Impulse withstand voltage at sea level	2.9 kV
Contact resistance $R_1$	2.17 m $\Omega$
Contact resistance $R_2$	2.26 m $\Omega$
Insertion/withdrawal cycles	25

### Climatic test

Specification	DIN 50018:2013-05
Corrosive stress	0.2 dm <sup>3</sup> SO <sub>2</sub> on 300 dm <sup>3</sup> /40 °C/1 cycle
Thermal stress	100 °C/168 h
Power-frequency withstand voltage	1.4 kV

### Vibration test

Specification	IEC 60068-2-6:2007-12
Frequency	10 - 150 - 10 Hz
Sweep speed	1 octave/min
Amplitude	0.35 mm (10 Hz ... 60.1 Hz)
Acceleration	5g (60.1 Hz ... 150 Hz)

# ME 6,2 TBUS-2 1,5/5-ST-3,81 GY - DIN rail bus connector



2695439

<https://www.phoenixcontact.com/us/products/2695439>

Test duration per axis	2.5 h
Test directions	X-, Y- and Z-axis (pos. and neg.)

## Shocks

Specification	IEC 60068-2-27:2008-02
Pulse shape	Semi-sinusoidal
Acceleration	30g
Shock duration	18 ms
Test directions	X-, Y- and Z-axis (pos. and neg.)

## Ambient conditions

Ambient temperature (storage/transport)	-40 °C ... 55 °C
Relative humidity (storage/transport)	30 % ... 70 %
Ambient temperature (assembly)	-5 °C ... 100 °C
Ambient temperature (operation)	-40 °C ... 105 °C (dependent on the derating curve)

## Ambient conditions

Ambient temperature (operation)	-40 °C ... 105 °C (dependent on the derating curve)
Ambient temperature (storage/transport)	-40 °C ... 55 °C
Relative humidity (storage/transport)	30 % ... 70 %
Ambient temperature (assembly)	-5 °C ... 100 °C

## Electrical tests

### Thermal test | Test group C

Specification	IEC 60512-5-1:2002-02
Tested number of positions	5

### Air clearances and creepage distances |

Specification	IEC 60664-1:2007-04
Insulating material group	I
Rated insulation voltage (III/3)	125 V
Rated surge voltage (III/3)	2.5 kV
minimum clearance value - non-homogenous field (III/3)	1.5 mm
minimum creepage distance (III/3)	1.9 mm
Rated insulation voltage (III/2)	125 V
Rated surge voltage (III/2)	2.5 kV
minimum clearance value - non-homogenous field (III/2)	1.5 mm
minimum creepage distance (III/2)	1.5 mm

# ME 6,2 TBUS-2 1,5/5-ST-3,81 GY - DIN rail bus connector

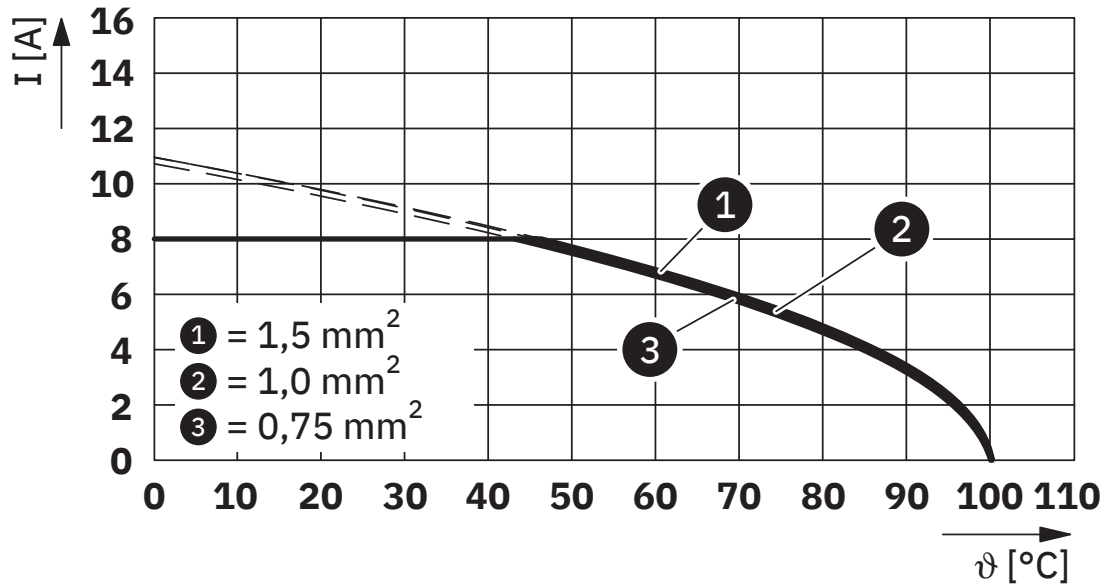


2695439

<https://www.phoenixcontact.com/us/products/2695439>

## Drawings

Diagram



Type: ME 6,2 TBUS-2 1,5/5-ST-3,81 ...

# ME 6,2 TBUS-2 1,5/5-ST-3,81 GY - DIN rail bus connector





2695439

<https://www.phoenixcontact.com/us/products/2695439>

## Approvals

To download certificates, visit the product detail page: <https://www.phoenixcontact.com/us/products/2695439>

 <b>cUL Recognized</b> Approval ID: FILE E 60425				
	Nominal voltage $U_N$	Nominal current $I_N$	Cross section AWG	Cross section $mm^2$
B	150 V	8 A	-	-
D	150 V	8 A	-	-

 <b>UL Recognized</b> Approval ID: FILE E 60425				
	Nominal voltage $U_N$	Nominal current $I_N$	Cross section AWG	Cross section $mm^2$
B	150 V	8 A	-	-
D	150 V	8 A	-	-

# ME 6,2 TBUS-2 1,5/5-ST-3,81 GY - DIN rail bus connector



2695439

<https://www.phoenixcontact.com/us/products/2695439>

## Classifications

### ECLASS

ECLASS-13.0	27460201
ECLASS-15.0	27460201

### ETIM

ETIM 10.0	EC002637
-----------	----------

### UNSPSC

UNSPSC 21.0	39121400
-------------	----------

# ME 6,2 TBUS-2 1,5/5-ST-3,81 GY - DIN rail bus connector



2695439

<https://www.phoenixcontact.com/us/products/2695439>

## Environmental product compliance

### EU RoHS

Fulfills EU RoHS substance requirements	Yes, No exemptions
---	--------------------

### China RoHS

Environment friendly use period (EFUP)	EFUP-E
	No hazardous substances above the limits

### EU REACH SVHC

REACH candidate substance (CAS No.)	No substance above 0.1 wt%
-------------------------------------	----------------------------

Phoenix Contact 2026 © - all rights reserved  
<https://www.phoenixcontact.com>

Phoenix Contact USA  
586 Fulling Mill Road  
Middletown, PA 17057, United States  
(+717) 944-1300  
[info@phoenixcon.com](mailto:info@phoenixcon.com)