

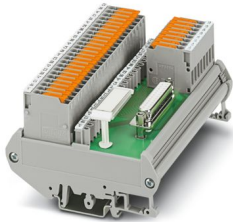
FLKM-D25 SUB/B/KDS3-MT/TU810/P - Termination board



2304539

<https://www.phoenixcontact.com/us/products/2304539>

Please be informed that the data shown in this PDF document is generated from our online catalog. Please find the complete data in the user documentation. Our general terms of use for downloads are valid.



VARIOFACE module for ABB S800 I/O, with knife disconnect terminal blocks and specific marking (+1, B1, C1, +2, B2, C2, ... +8, B8, C8)

Your advantages

- Eight positive terminal blocks with knife disconnection (TU810/P)
- Eight negative terminal blocks with knife disconnection (TU810)
- One positive and negative terminal block with knife disconnection per channel (TU830)

Commercial data

Item number	2304539
Packing unit	1 pc
Minimum order quantity	1 pc
Sales key	C421
Product key	DK218L
GTIN	4017918949129
Weight per piece (including packing)	339 g
Weight per piece (excluding packing)	269.84 g
Customs tariff number	85369010
Country of origin	DE

FLKM-D25 SUB/B/KDS3-MT/TU810/P - Termination board



2304539

<https://www.phoenixcontact.com/us/products/2304539>

Technical data

Product properties

Product type	Interface module
Number of positions	25
No. of channels	2
	4
	8
	16

Insulation characteristics: Air clearances and creepage distances

Insulation	Functional insulation
Overvoltage category	II
Pollution degree	2

Electrical properties

Operating voltage (AC)	≤ 30 V AC
Operating voltage (DC)	≤ 60 V DC
Current (per branch)	≤ 2 A
Current (L1-, L2-)	≤ 4 A
Current (L1+, L2+)	≤ 8 A
Current (Pin 1, 14, 2, 15, 11, 24, 12, 25)	≤ 4 A

Air clearances and creepage distances

Rated insulation voltage	63 V
Rated surge voltage	0.6 kV (1.2/50 μs)

Supported controller: ABB S800 I/O

Suitable I/O card	DI810
	DI811
	DI818
	DI830
	DI831
	DI840
	DI885
	DO814
	DO818
	AI810
	AI815
	AI845

Connection data

Connection 1 (control level)

Connection in acc. with standard	IEC 60807-2
----------------------------------	-------------

FLKM-D25 SUB/B/KDS3-MT/TU810/P - Termination board



2304539

<https://www.phoenixcontact.com/us/products/2304539>

Connection method	D-SUB socket strip
Screw thread	UNC 4-40
Number of connections	1
Number of positions	25
Insertion/withdrawal cycles	> 500
Pitch	2.77 mm

Connection 2 (field level)

Connection method	Screw connection with disconnect knife
Stripping length	8 mm
Screw thread	M3
Number of positions	32
Conductor cross-section rigid	0.2 mm ² ... 4 mm ²
Conductor cross-section rigid (2 conductors with same cross section)	0.2 mm ² ... 1 mm ²
Conductor cross-section flexible	0.2 mm ² ... 4 mm ²
	0.25 mm ² ... 2.5 mm ² (Ferrule without plastic sleeve)
	0.25 mm ² ... 1.5 mm ² (Ferrule with plastic sleeve)
Conductor cross-section flexible (2 conductors with same cross section)	0.2 mm ² ... 1 mm ²
	0.25 mm ² ... 0.75 mm ² (Ferrule without plastic sleeve)
	0.5 mm ² ... 1 mm ² (TWIN ferrule with plastic sleeve)
Conductor cross-section AWG	24 ... 12
Tightening torque	0.5 Nm ... 0.6 Nm
Pitch	5.08 mm

Connection 3 (field level)

Connection method	Test socket
Number of positions	24

Signaling

Status display	no
Status display present	no

Dimensions

Item dimensions

Width	126 mm
Height	89.6 mm
Depth	60.01 mm

Material specifications

Color	gray (RAL 7042)
Housing insulation material	PVC

Environmental and real-life conditions

Ambient conditions

FLKM-D25 SUB/B/KDS3-MT/TU810/P - Termination board



2304539

<https://www.phoenixcontact.com/us/products/2304539>

Degree of protection (Module)	IP00
Degree of protection (Installation location)	≥ IP54
Ambient temperature (operation)	-20 °C ... 50 °C
Ambient temperature (storage/transport)	-20 °C ... 70 °C
Altitude	≤ 2000 m

Approvals

UKCA

Certificate	UKCA-compliant
-------------	----------------

Standards and regulations

Air clearances and creepage distances

Standards/regulations	EN IEC 60664-1
-----------------------	----------------

Mounting

Mounting type	DIN rail mounting
Mounting position	any

Notes

Notes on operation	For proper use, the specifications of the installation directive (see Downloads) must be observed. For applications or use with third-party products, the specifications, and the safety and warning instructions of the respective third-party manufacturer must also be met.
--------------------	--

FLKM-D25 SUB/B/KDS3-MT/TU810/P - Termination board

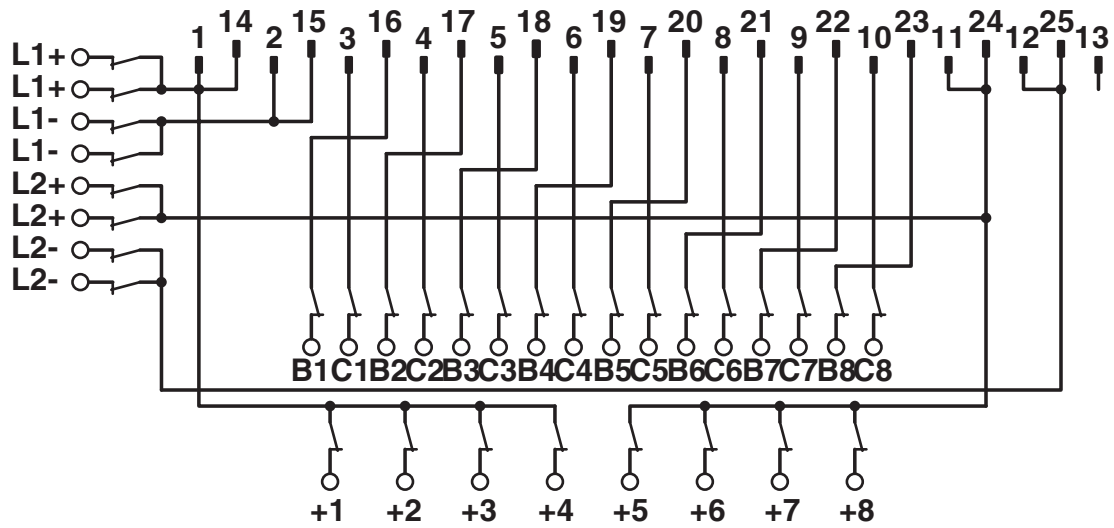


2304539

<https://www.phoenixcontact.com/us/products/2304539>

Drawings

Circuit diagram



FLKM-D25 SUB/B/KDS3-MT/TU810/P connection scheme

FLKM-D25 SUB/B/KDS3-MT/TU810/P - Termination board



2304539

<https://www.phoenixcontact.com/us/products/2304539>

Classifications

ECLASS

ECLASS-13.0	27141152
ECLASS-15.0	27141152

ETIM

ETIM 10.0	EC002780
-----------	----------

UNSPSC

UNSPSC 21.0	39121400
-------------	----------

FLKM-D25 SUB/B/KDS3-MT/TU810/P - Termination board



2304539

<https://www.phoenixcontact.com/us/products/2304539>

Environmental product compliance

EU RoHS

Fulfills EU RoHS substance requirements	Yes
Exemption	6(c)

China RoHS

Environment friendly use period (EFUP)	EFUP-50
	An article-related China RoHS declaration table can be found in the download area for the respective article under "Manufacturer declaration". For all articles with EFUP-E, no China RoHS declaration table issued and required.

EU REACH SVHC

REACH candidate substance (CAS No.)	Lead(CAS: 7439-92-1)
SCIP	8e5ce6e7-9b43-4ade-a151-137370461a19

Phoenix Contact 2026 © - all rights reserved

<https://www.phoenixcontact.com>

Phoenix Contact USA
586 Fulling Mill Road
Middletown, PA 17057, United States
(+717) 944-1300
info@phoenixcon.com