

# HBUS 107,6-16P-1S DEV-KIT BK - DIN rail bus connector



2202545

<https://www.phoenixcontact.com/us/products/2202545>

Please be informed that the data shown in this PDF document is generated from our online catalog. Please find the complete data in the user documentation. Our general terms of use for downloads are valid.



RAIL

Bus connector to connect BC modules on the DIN rail; suitable for BC DEV-KITS, contains HBUS 107,6 and pin strip



## Your advantages

- Space-saving installation under the housing in the DIN rail
- Fast module-to-module communication without additional wiring effort
- One DIN rail connector for each overall width

## Commercial data

Item number	2202545
Packing unit	1 pc
Minimum order quantity	1 pc
Sales key	AC10
Product key	ACHBAD
GTIN	4055626142456
Weight per piece (including packing)	30 g
Weight per piece (excluding packing)	27.5 g
Customs tariff number	85369010
Country of origin	DE

# HBUS 107,6-16P-1S DEV-KIT BK - DIN rail bus connector



2202545

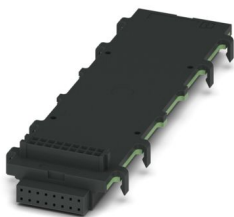
<https://www.phoenixcontact.com/us/products/2202545>

## Set consists of

### HBUS 107,6-16P-1S BK - DIN rail bus connector

2896306

<https://www.phoenixcontact.com/us/products/2896306>



DIN rail bus connector, color: black, nominal current: 3 A (Total current of 25 A max.), rated voltage (III/2): 30 V, number of positions: 16, product range: BC 107,6..., pitch: 2.54 mm, mounting: DIN rail mounting, locking: without

---

### PSTD 0,65X0,65/9-2,54 - Pin strip

2200700

<https://www.phoenixcontact.com/us/products/2200700>



Pin strip, color: black, contact connection type: Pin, number of potentials: 18, number of rows: 2, number of positions: 18, number of connections: 18, product range: PSTD 0,65X0,65/...-V, pitch: 2.54 mm, mounting: THR soldering, pin layout: Linear pinning, solder pin [P]: 2.5 mm, locking: without, type of packaging: packed in cardboard

# HBUS 107,6-16P-1S DEV-KIT BK - DIN rail bus connector



2202545

<https://www.phoenixcontact.com/us/products/2202545>

## Technical data

### Product properties

Product type	DIN rail bus connector
Product family	BC 107,6..
Number of positions	16
Pitch	2.54 mm

### Electrical properties

#### Properties

Nominal current $I_N$	3 A (Total current of 25 A max.)
Contact resistance	23.9 mΩ
Rated voltage (III/3)	30 V
Rated surge voltage (III/3)	0.8 kV
Rated voltage (III/2)	30 V
Rated surge voltage (III/2)	0.8 kV
Rated voltage (II/2)	100 V
Rated surge voltage (II/2)	0.8 kV

### Material specifications

#### Material data - contact

Contact material	Cu alloy
Surface characteristics	Completely gold-plated

#### Material data - housing

Color (Housing)	black (9005)
Insulating material	PA
Insulating material group	I
CTI according to IEC 60112	600
Flammability rating according to UL 94	V0

#### material specifications - connector

Color ()	()
----------	----

### Dimensions

Pitch	2.54 mm
Width [w]	107.6 mm

### Mounting

Mounting type	DIN rail mounting
---------------	-------------------

### Mechanical tests

#### Visual inspection

# HBUS 107,6-16P-1S DEV-KIT BK - DIN rail bus connector



2202545

<https://www.phoenixcontact.com/us/products/2202545>

Specification	IEC 60512-1-1:2002-02
Result	Test passed

## Dimension check

Specification	IEC 60512-1-2:2002-02
Result	Test passed

## Environmental and real-life conditions

### Durability test

Specification	IEC 60512-9-1:2010-03
Impulse withstand voltage at sea level	0.91 kV
Contact resistance $R_1$	23.9 m $\Omega$
Contact resistance $R_2$	24 m $\Omega$
Insertion/withdrawal cycles	25

### Climatic test

Specification	DIN 50018:2013-05
Corrosive stress	0.2 dm <sup>3</sup> SO <sub>2</sub> on 300 dm <sup>3</sup> /40 °C/1 cycle
Thermal stress	100 °C/168 h
Power-frequency withstand voltage	0.55 kV

### Vibration test

Specification	IEC 60068-2-6:2007-12
Frequency	10 - 150 - 10 Hz
Sweep speed	1 octave/min
Amplitude	0.15 mm (10 Hz ... 58.1 Hz)
Acceleration	20 m/s <sup>2</sup>
Test duration per axis	2.5 h
Test directions	X-, Y- and Z-axis (pos. and neg.)

### Shocks

Specification	IEC 60068-2-27:2008-02
Pulse shape	Semi-sinusoidal
Acceleration	150 m/s <sup>2</sup>
Shock duration	11 ms
Test directions	X-, Y- and Z-axis (pos. and neg.)

### Glow-wire test

Specification	IEC 60695-2-10:2013-04
Temperature	850 °C
Time of exposure	30 s

### Ambient conditions

Ambient temperature (storage/transport)	-40 °C ... 55 °C
Relative humidity (storage/transport)	80 %
Ambient temperature (assembly)	-5 °C ... 100 °C

# HBUS 107,6-16P-1S DEV-KIT BK - DIN rail bus connector



2202545

<https://www.phoenixcontact.com/us/products/2202545>

Ambient temperature (operation)	-40 °C ... 105 °C (dependent on the derating curve)
---------------------------------	---

## Ambient conditions

Ambient temperature (operation)	-40 °C ... 105 °C (dependent on the derating curve)
Ambient temperature (storage/transport)	-40 °C ... 55 °C
Relative humidity (storage/transport)	80 %
Ambient temperature (assembly)	-5 °C ... 100 °C

## Electrical tests

### Air clearances and creepage distances |

Specification	IEC 60664-1:2007-04
Insulating material group	I
Rated insulation voltage (III/3)	30 V
Rated surge voltage (III/3)	0.8 kV
minimum clearance value - non-homogenous field (III/3)	0.8 mm
minimum creepage distance (III/3)	1.3 mm
Rated insulation voltage (III/2)	30 V
Rated surge voltage (III/2)	0.8 kV
minimum clearance value - non-homogenous field (III/2)	0.2 mm
minimum creepage distance (III/2)	0.53 mm
Rated insulation voltage (II/2)	100 V
Rated surge voltage (II/2)	0.8 kV
minimum clearance value - non-homogenous field (II/2)	0.2 mm
minimum creepage distance (II/2)	0.71 mm

## Packaging specifications

Outer packaging type	Carton
----------------------	--------

# HBUS 107,6-16P-1S DEV-KIT BK - DIN rail bus connector



2202545

<https://www.phoenixcontact.com/us/products/2202545>

## Classifications

### ECLASS

ECLASS-13.0	27460202
ECLASS-15.0	27460202

### ETIM

ETIM 10.0	EC002638
-----------	----------

### UNSPSC

UNSPSC 21.0	39121400
-------------	----------

# HBUS 107,6-16P-1S DEV-KIT BK - DIN rail bus connector



2202545

<https://www.phoenixcontact.com/us/products/2202545>

## Environmental product compliance

### EU RoHS

Fulfills EU RoHS substance requirements	Yes, No exemptions
---	--------------------

### China RoHS

Environment friendly use period (EFUP)	EFUP-E
	No hazardous substances above the limits

### EU REACH SVHC

REACH candidate substance (CAS No.)	No substance above 0.1 wt%
-------------------------------------	----------------------------

Phoenix Contact 2026 © - all rights reserved  
<https://www.phoenixcontact.com>

Phoenix Contact USA  
586 Fulling Mill Road  
Middletown, PA 17057, United States  
(+717) 944-1300  
[info@phoenixcon.com](mailto:info@phoenixcon.com)