

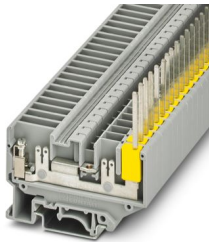
UVKB 4-FS(4-2,8)TP(2,4X0,8)4L - Feed-through terminal block



1954443

<https://www.phoenixcontact.com/us/products/1954443>

Please be informed that the data shown in this PDF document is generated from our online catalog. Please find the complete data in the user documentation. Our general terms of use for downloads are valid.



Feed-through terminal block, nom. voltage: 500 V, nominal current: 29 A, connection method: Screw connection, cross section: 0.2 mm² - 4 mm², connection method: TERMI-POINT®, mounting: NS 35/7,5, NS 35/15, NS 32, color: gray

Commercial data

Item number	1954443
Packing unit	1 pc
Note	Made to order (non-returnable)
Sales key	BE05
Product key	BE511X
GTIN	4017918052591
Weight per piece (including packing)	14.6 g
Weight per piece (excluding packing)	14.6 g
Customs tariff number	85369010
Country of origin	PL

UVKB 4-FS(4-2,8)TP(2,4X0,8)4L - Feed-through terminal block



1954443

<https://www.phoenixcontact.com/us/products/1954443>

Technical data

Product properties

Product type	Hybrid terminal block
Number of connections	7
Number of rows	1
Potentials	1

Insulation characteristics

Overvoltage category	III
Degree of pollution	3

Electrical properties

Rated surge voltage	6 kV
---------------------	------

Connection data

Number of connections per level	7
Nominal cross section	4 mm ²

Level 1 below 1

Connection method	Screw connection
Screw thread	M3
Tightening torque	0.6 ... 0.8 Nm
Stripping length	8 mm
TERMI-POINT pin dimensions	2.4 x 0.8 mm
Position of the TERMI-POINT pin	horizontal
Internal cylindrical gage	A3
Conductor cross-section rigid	0.2 mm ² ... 4 mm ²
Cross section AWG	24 ... 12 (converted acc. to IEC)
Conductor cross-section flexible	0.2 mm ² ... 4 mm ²
Conductor cross-section, flexible [AWG]	24 ... 12 (converted acc. to IEC)
Conductor cross-section flexible (ferrule without plastic sleeve)	0.25 mm ² ... 4 mm ²
Flexible conductor cross-section (ferrule with plastic sleeve)	0.25 mm ² ... 2.5 mm ²
Cross-section with insertion bridge, rigid	4 mm ²
Cross-section with insertion bridge, flexible	4 mm ²
2 conductors with same cross section, rigid	0.2 mm ² ... 1.5 mm ²
2 conductors with same cross section, flexible	0.2 mm ² ... 1.5 mm ²
2 conductors with same cross section, flexible, with ferrule without plastic sleeve	0.25 mm ² ... 1.5 mm ²
2 conductors with the same cross section, flexible, with TWIN ferrule with plastic sleeve	0.5 mm ² ... 2.5 mm ²
Nominal current	29 A
Maximum load current	29 A (with 4 mm ² conductor cross-section)

UVKB 4-FS(4-2,8)TP(2,4X0,8)4L - Feed-through terminal block



1954443

<https://www.phoenixcontact.com/us/products/1954443>

Nominal voltage	500 V
Connection method	TERMI-POINT®

Dimensions

Width	6.2 mm
End cover width	2.2 mm

Material specifications

Color	gray
Flammability rating according to UL 94	V2
Insulating material group	I
Insulating material	PA

Mechanical properties

Mechanical data

Open side panel	Yes
-----------------	-----

Mounting

Mounting type	NS 35/7,5
	NS 35/15
	NS 32

UVKB 4-FS(4-2,8)TP(2,4X0,8)4L - Feed-through terminal block

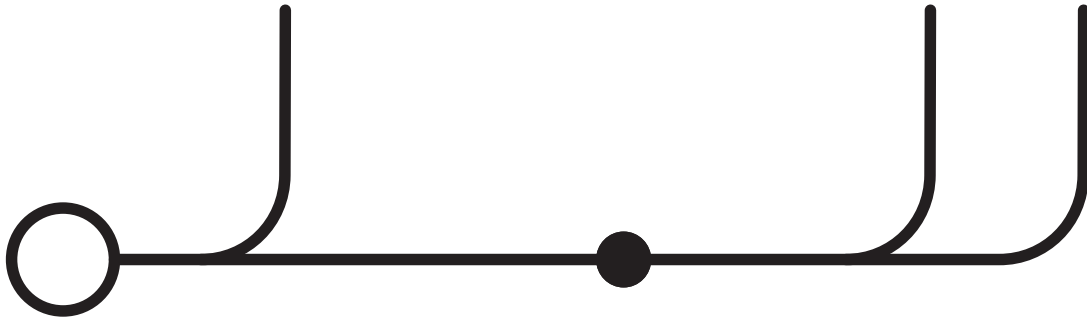


1954443

<https://www.phoenixcontact.com/us/products/1954443>

Drawings

Circuit diagram



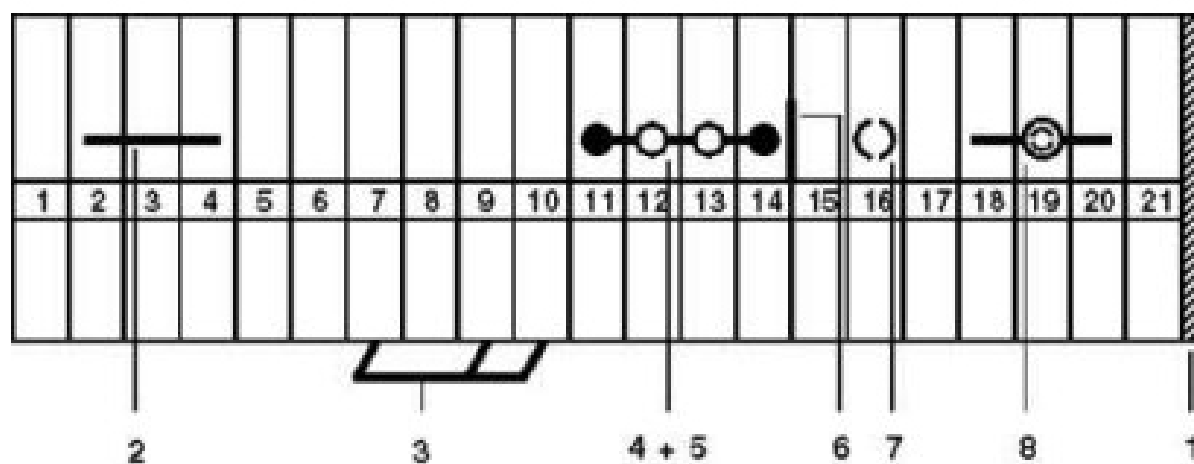
UVKB 4-FS(4-2,8)TP(2,4X0,8)4L - Feed-through terminal block



1954443

<https://www.phoenixcontact.com/us/products/1954443>

Circuit diagram



- 1 = cover
- 2 = fixed bridge
- 3 = insertion bridge
- 4 = isolator bridge bar
- 5 = bridge bar isolator
- 6 = separating plate
- 7 = partition plate
- 8 = test plug socket

UVKB 4-FS(4-2,8)TP(2,4X0,8)4L - Feed-through terminal block



1954443

<https://www.phoenixcontact.com/us/products/1954443>

Phoenix Contact 2026 © - all rights reserved

<https://www.phoenixcontact.com>

Phoenix Contact USA
586 Fulling Mill Road
Middletown, PA 17057, United States
(+717) 944-1300
info@phoenixcon.com