

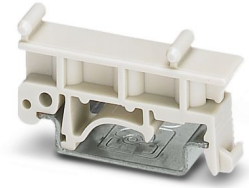
HC-KA-FE - Foot element

1775240

<https://www.phoenixcontact.com/us/products/1775240>

Please be informed that the data shown in this PDF document is generated from our online catalog. Please find the complete data in the user documentation. Our general terms of use for downloads are valid.

Foot element, for mounting on DIN rail NS 32, DIN rail NS 35/7.5 or DIN rail NS 35/15, can be inserted between basic and side element



Commercial data

Item number	1775240
Packing unit	10 pc
Minimum order quantity	1 pc
Sales key	BF61
Product key	AF7ADZ
GTIN	4017918037970
Weight per piece (including packing)	3.73 g
Weight per piece (excluding packing)	3.668 g
Customs tariff number	85389099
Country of origin	DE

HC-KA-FE - Foot element



1775240

<https://www.phoenixcontact.com/us/products/1775240>

Technical data

Notes

General	At least two foot elements are necessary per adapter.
---------	---

Product properties

Product type	Mounting material
--------------	-------------------

Dimensions

Width	10 mm
Height	22.85 mm
Depth	42.45 mm

Material specifications

Material	PA 6.6
----------	--------

HC-KA-FE - Foot element



1775240

<https://www.phoenixcontact.com/us/products/1775240>

Approvals

To download certificates, visit the product detail page: <https://www.phoenixcontact.com/us/products/1775240>



EAC

Approval ID: RU C-DE.AI30.B.01102

HC-KA-FE - Foot element



1775240

<https://www.phoenixcontact.com/us/products/1775240>

Classifications

ECLASS

ECLASS-13.0	27440192
ECLASS-15.0	27440192

ETIM

ETIM 10.0	EC002943
-----------	----------

UNSPSC

UNSPSC 21.0	39121400
-------------	----------

HC-KA-FE - Foot element



1775240

<https://www.phoenixcontact.com/us/products/1775240>

Environmental product compliance

EU RoHS

Fulfills EU RoHS substance requirements	Yes, No exemptions
---	--------------------

China RoHS

Environment friendly use period (EFUP)	EFUP-E
	No hazardous substances above the limits

EU REACH SVHC

REACH candidate substance (CAS No.)	No substance above 0.1 wt%
-------------------------------------	----------------------------

EF3.1 Climate Change

CO2e kg	0.026 kg CO2e
---------	---------------

Phoenix Contact 2026 © - all rights reserved
<https://www.phoenixcontact.com>

Phoenix Contact USA
586 Fulling Mill Road
Middletown, PA 17057, United States
(+717) 944-1300
info@phoenixcon.com