

RC-12P1N12H000 - Device connector rear mounting



1597207

<https://www.phoenixcontact.com/us/products/1597207>

Please be informed that the data shown in this PDF document is generated from our online catalog. Please find the complete data in the user documentation. Our general terms of use for downloads are valid.



M23, Device connector rear mounting, application: Signal, series: RC, straight, shielded: yes, Screw locking mechanism, No. of pos.: 12, Direction of rotation: Standard, contact connection type: Pin, Solder cup, Axial O-ring, Panel thickness min.: 0.8 mm, Panel thickness max.: 6.5 mm, coding: N

Commercial data

| | |
|--------------------------------------|--------------------------------|
| Item number | 1597207 |
| Packing unit | 1 pc |
| Note | Made to order (non-returnable) |
| Sales key | AB31 |
| Product key | ABRAFR |
| GTIN | 4046356214926 |
| Weight per piece (including packing) | 57.14 g |
| Weight per piece (excluding packing) | 57.14 g |
| Customs tariff number | 85366990 |
| Country of origin | DE |

RC-12P1N12H000 - Device connector rear mounting



1597207

<https://www.phoenixcontact.com/us/products/1597207>

Technical data

Product properties

| | |
|--------------|-----------------------------------|
| Product type | Circular connectors (device side) |
|--------------|-----------------------------------|

Material specifications

| | |
|------------------|-------|
| Housing material | Metal |
|------------------|-------|

Connector

Insulating body

| | |
|---|---|
| Coding | N |
| Material (Insulating body) | PBT |
| Material (Contact) | CuZn |
| Material (Contact surface) | Ni/Au |
| Insertion/withdrawal cycles | 100 |
| Connection method | Solder cup |
| Contact switching type | Pin |
| Application | Signal |
| Number of positions | 12 |
| Direction of rotation | Standard |
| Connection profile | 12 |
| Number (Contact group 1) | 12 |
| Contact diameter (Contact group 1) | 1 mm |
| Litz wires Min. cross section (Contact group 1) | 0.08 mm ² |
| Litz wires Max. cross section (Contact group 1) | 1 mm ² |
| Rated current Contact (Contact group 1) | 8 A (for max. connection cross section) |
| Rated voltage Contact (Contact group 1) | 48 V AC 74 V DC |
| Rated surge voltage | 1.5 kV |
| Overvoltage category | III |
| Degree of pollution | 3 |

Housing

| | |
|----------------------------|---------------------------|
| Type | Feed-through header |
| Thread type | M23 |
| Design | straight |
| Type of locking | Screw locking mechanism |
| Pg screw connection | none |
| Mounting type | Rear mounting (M25 x 1,5) |
| Assembly note | Central fastening |
| Material (Housing) | GD-Zn |
| Material (Housing surface) | Ni |
| Material (Rotating parts) | CuZn |

RC-12P1N12H000 - Device connector rear mounting



1597207

<https://www.phoenixcontact.com/us/products/1597207>

| | |
|-----------------------------------|--------------|
| Degree of protection (plugged in) | IP67 |
| Seal for the device | Axial O-ring |

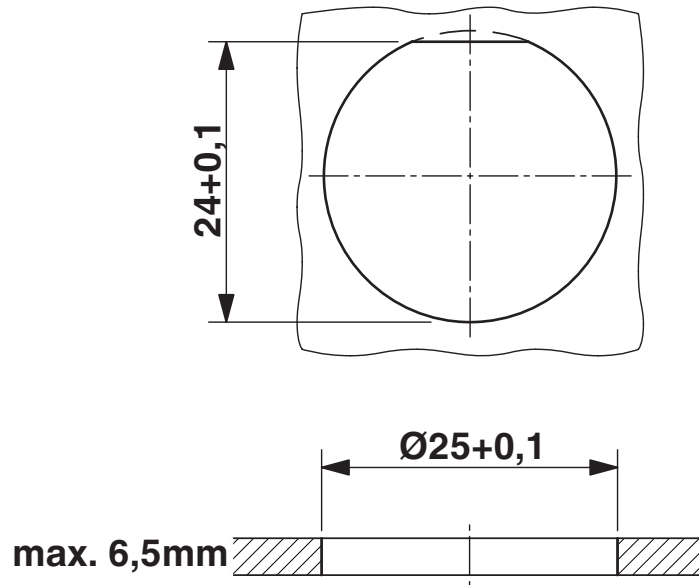
RC-12P1N12H000 - Device connector rear mounting

1597207

<https://www.phoenixcontact.com/us/products/1597207>

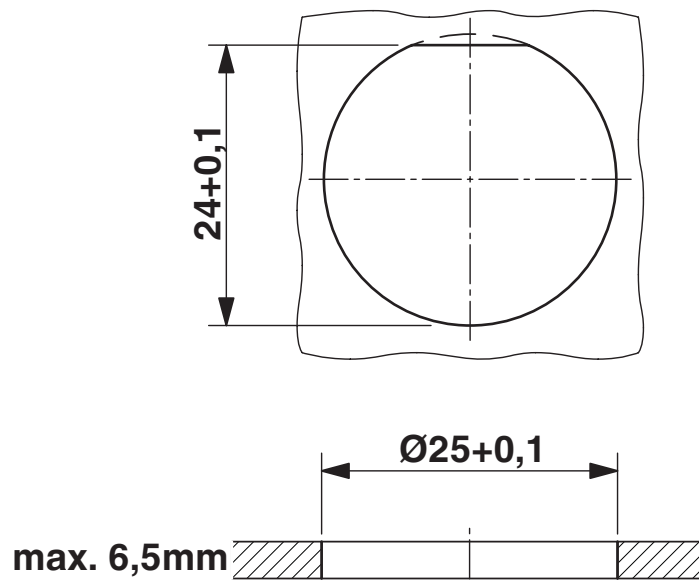
Drawings

Dimensional drawing



Installation dimensions

Dimensional drawing



Installation dimensions

RC-12P1N12H000 - Device connector rear mounting



1597207

<https://www.phoenixcontact.com/us/products/1597207>

Schematic diagram



Connector pin assignment

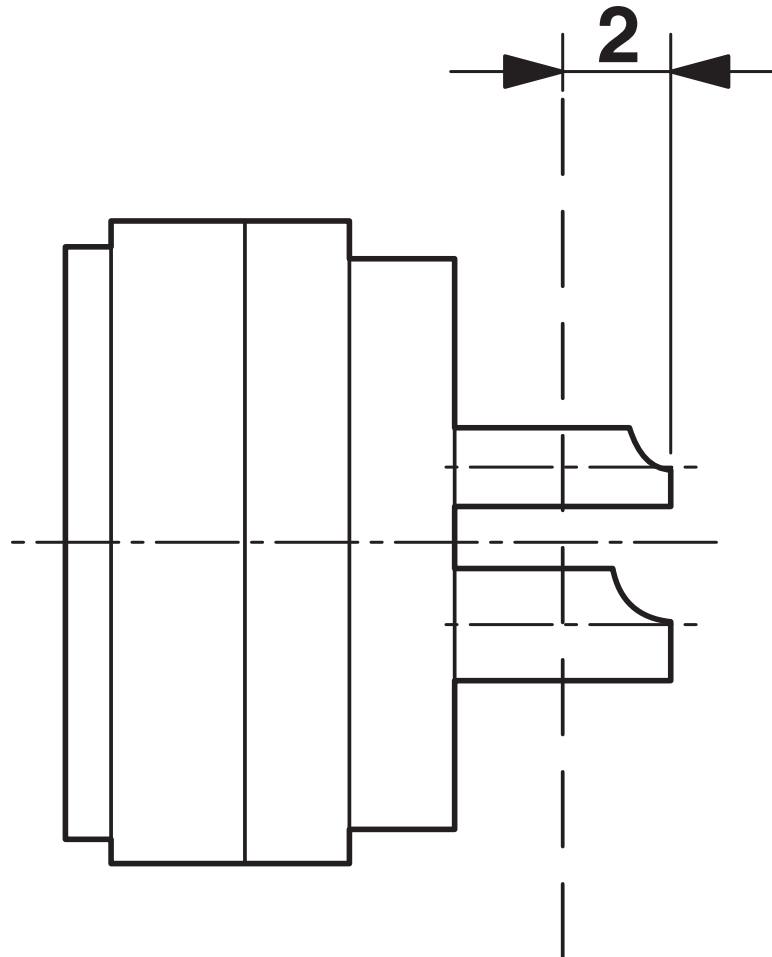
RC-12P1N12H000 - Device connector rear mounting



1597207

<https://www.phoenixcontact.com/us/products/1597207>

Schematic diagram



Dimensional drawing

Phoenix Contact 2026 © - all rights reserved
<https://www.phoenixcontact.com>

Phoenix Contact USA
586 Fulling Mill Road
Middletown, PA 17057, United States
(+717) 944-1300
info@phoenixcon.com