

# RC-06P1N120000 - Contact insert



1593072

<https://www.phoenixcontact.com/us/products/1593072>

Please be informed that the data shown in this PDF document is generated from our online catalog. Please find the complete data in the user documentation. Our general terms of use for downloads are valid.



Contact insert, M23, number of positions: 6, contact connection type: Pin, Solder cup, series: NC, RC, RM, TU, UC, This product is in the process of being discontinued. This product must no longer be considered for new projects. Please contact your sales representative for alternatives.

## Commercial data

Item number	1593072
Packing unit	10 pc
Minimum order quantity	1 pc
Sales key	AB31
Product key	ABRAFU
GTIN	4046356194082
Weight per piece (including packing)	10.07 g
Weight per piece (excluding packing)	7.36 g
Customs tariff number	85366990
Country of origin	DE

# RC-06P1N120000 - Contact insert



1593072

<https://www.phoenixcontact.com/us/products/1593072>

## Technical data

### Product properties

Product type	Contact insert
Series	NC
	RC
	RM
	TU
	UC
Application	Signal
Number of positions	6
Connection profile	6
Coding	N
Thread type	M23

### Electrical properties

Contact: Contact group 1

Min. cross section	0.08 mm <sup>2</sup>
Max. cross section	2.5 mm <sup>2</sup>
Nominal current I <sub>N</sub>	20 A (for max. connection cross section)
Nominal voltage U <sub>N</sub>	48 V AC
	74 V DC
Overvoltage category	III
Degree of pollution	3
Rated surge voltage	1.5 kV

### Connection data

Connection method	Solder cup
-------------------	------------

### Material specifications

Material Insulating body	PBT
Material Contact	CuZn
Material Contact surface	Ni/Au

### Connector

Direction of rotation	Standard
-----------------------	----------

### Mechanical properties

Mechanical data

Insertion/withdrawal cycles	50
-----------------------------	----

### Environmental and real-life conditions

# RC-06P1N120000 - Contact insert



1593072

<https://www.phoenixcontact.com/us/products/1593072>

## Ambient conditions

Ambient temperature (operation)

-40 °C ... 125 °C

# RC-06P1N120000 - Contact insert

1593072

<https://www.phoenixcontact.com/us/products/1593072>

## Drawings

Schematic diagram



Connector pin assignment

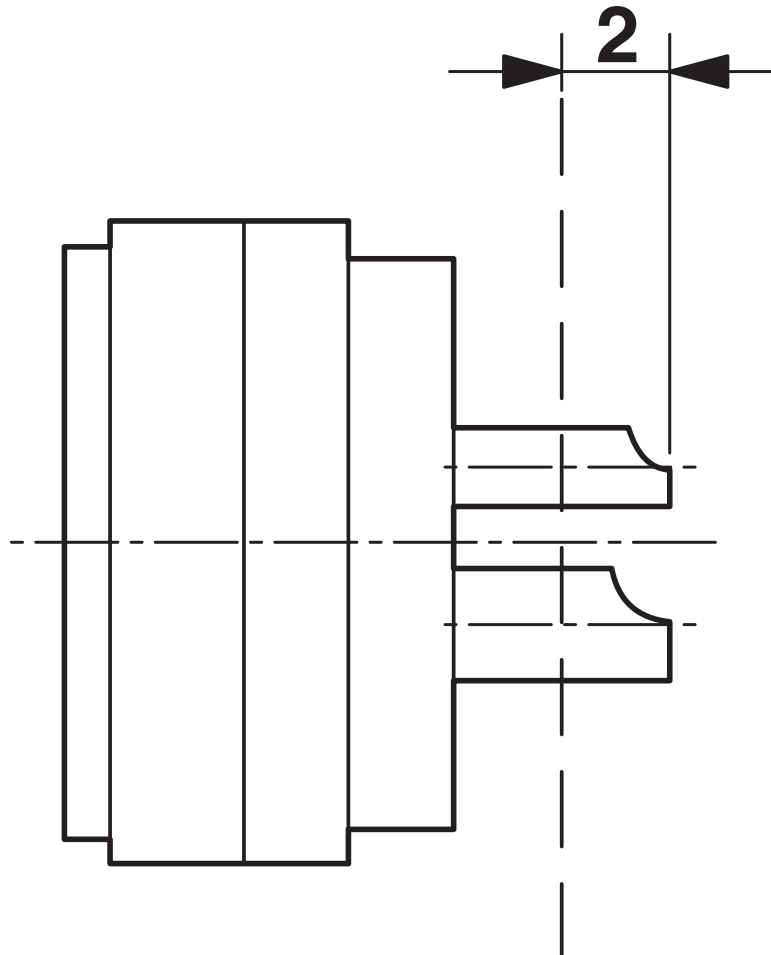
# RC-06P1N120000 - Contact insert



1593072

<https://www.phoenixcontact.com/us/products/1593072>

Schematic diagram



Dimensional drawing

# RC-06P1N120000 - Contact insert



1593072

<https://www.phoenixcontact.com/us/products/1593072>

## Classifications

### ECLASS

ECLASS-13.0	27440223
ECLASS-15.0	27440223

### ETIM

ETIM 10.0	EC003557
-----------	----------

### UNSPSC

UNSPSC 21.0	39121400
-------------	----------

# RC-06P1N120000 - Contact insert



1593072

<https://www.phoenixcontact.com/us/products/1593072>

## Environmental product compliance

### EU RoHS

Fulfills EU RoHS substance requirements	Yes, No exemptions
---	--------------------

### China RoHS

Environment friendly use period (EFUP)	EFUP-E
	No hazardous substances above the limits

### EU REACH SVHC

REACH candidate substance (CAS No.)	No substance above 0.1 wt%
-------------------------------------	----------------------------

Phoenix Contact 2026 © - all rights reserved  
<https://www.phoenixcontact.com>

Phoenix Contact USA  
586 Fulling Mill Road  
Middletown, PA 17057, United States  
(+717) 944-1300  
[info@phoenixcon.com](mailto:info@phoenixcon.com)