

FL COM SERVER... Quick Reference Guide

Questions ? Contact us:

PSM-HOTLINE: +49-(0) 5235-3-19890

FAX: +49-(0) 5235-3-19899

e-mail: interface-service@phoenixcontact.com

Configuration Up- and Download

© PHOENIX CONTACT - 03/2011

Build up a connection to the FL COM SERVER

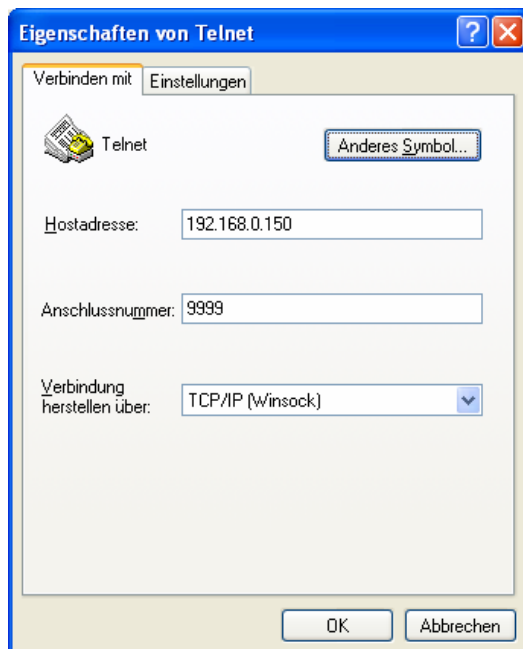
The FL COM SERVER... supports next to the Web-Based-Management two other configuration possibilities which can be used as alternative.

Configuration via Telnet

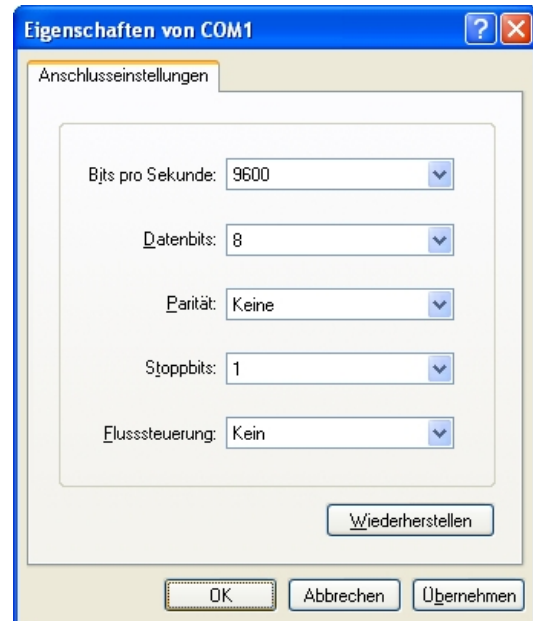
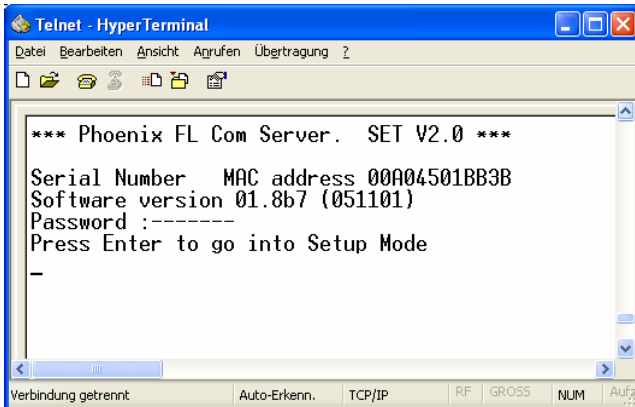
1. Open
START => Programm => Accessories =>
Communication => Hyperterminal
2. Set up a Telnet connection to the IP-Address
of the Com Server to Port no. **9999**.

Configuration via RS-232

1. Open
START => Programm => Accessories =>
Communication => Hyperterminal
2. Set up a terminal connection via COM 1 or
Com 2. The serial settings must be 9,6 kBit/s,
8 databits, No parity, no handshake.



3. As soon the connection is established you have to type in the password. (default = **private**).
4. Press ENTER to confirm

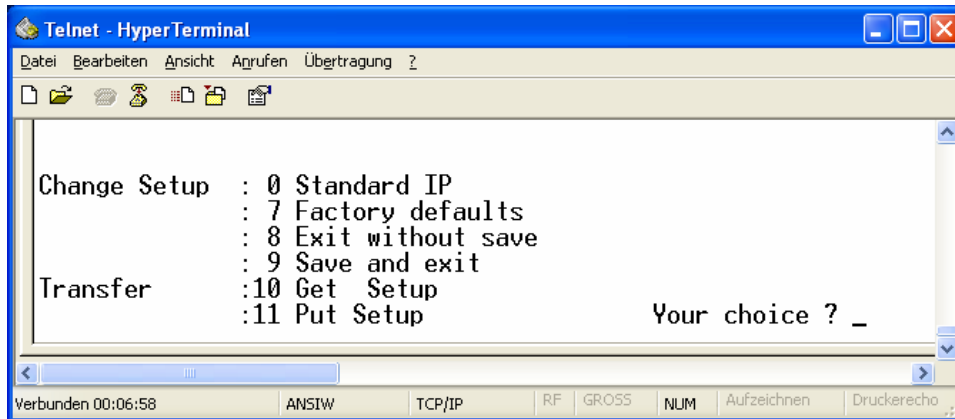


5. Confirm again by pressing ENTER again

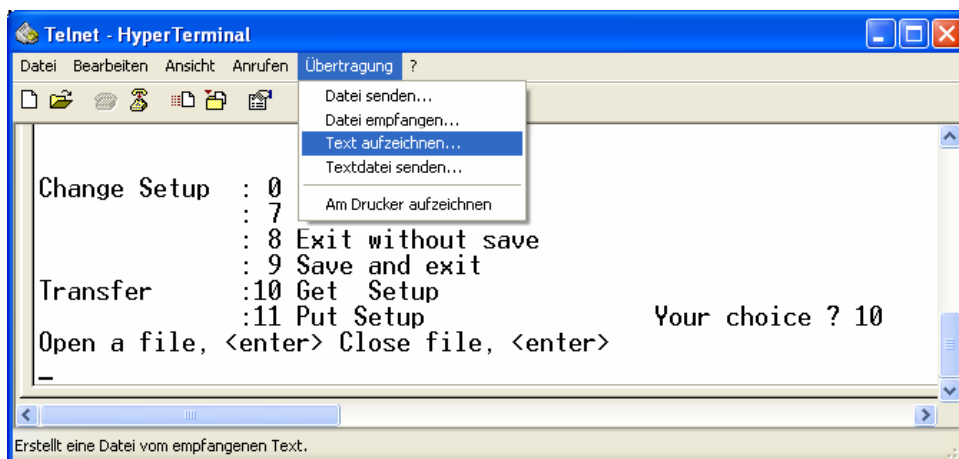
3. Press the X-key on your keyboard and simultaneously make a power reset of the FL COM SERVER.
4. Press ENTER to confirm

Save configuration from Com Server to a PC

After the connection is established you see the following configuration menu.

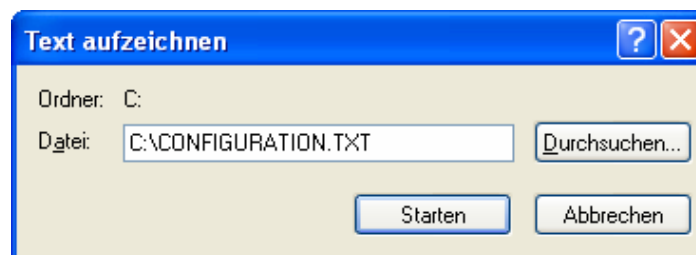


1. Choose Point 10 and confirm with ENTER.



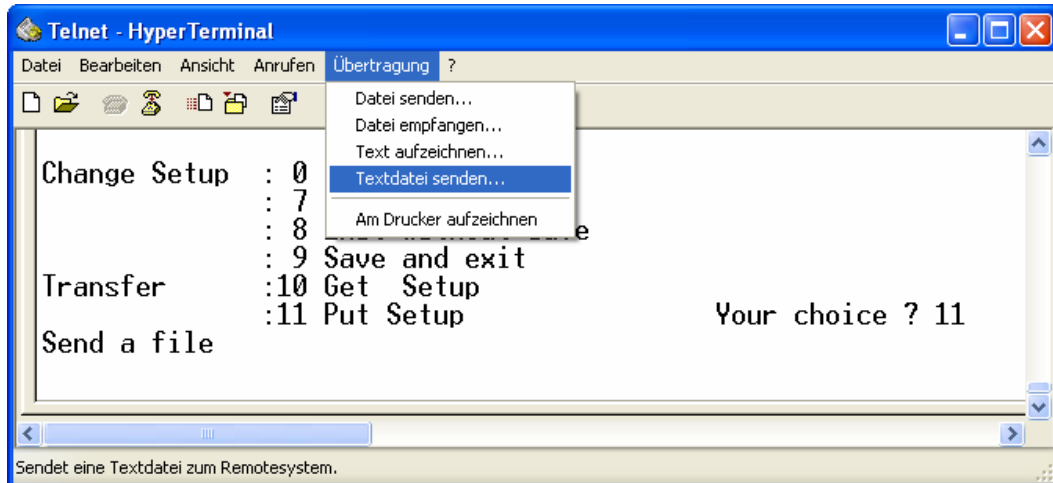
2. Choose under TRANSMISSION => SAVE TEXT

3. Type in the following menu the path and the name of the configuration file.

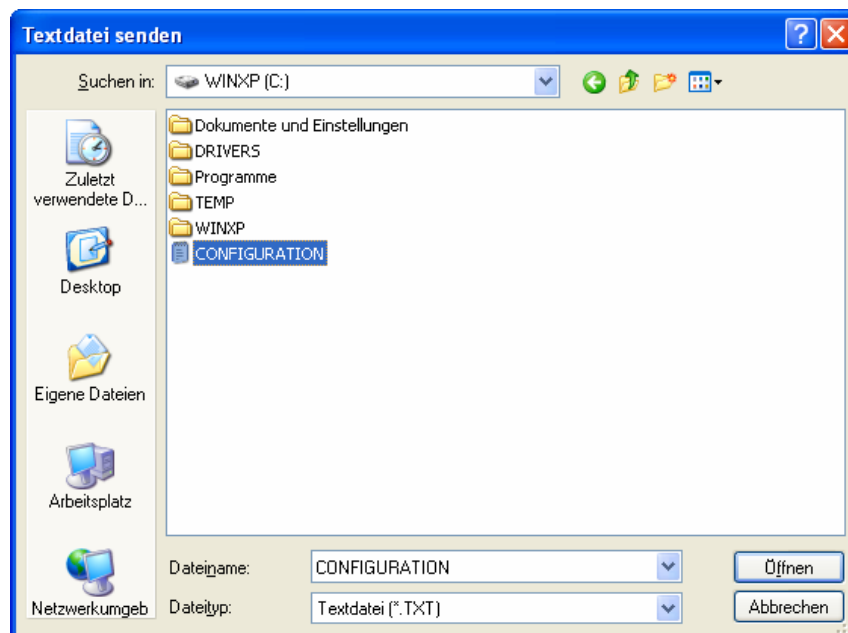


Save back a configuration from a PC to a Com Server

1. After the connection is established choose Point 11 and confirm by pressing ENTER



2. Choose under TRANSMISSION => SEND TEXT
3. Choose in the following menu the configuration file you want and confirm with ENTER



The file upload starts automatically.



The transmission can last up to a minute. You can only see a small LED activity at the serial interface during the transmission.

4. The successful data transfer will be confirmed with the following message.

```
Telnet - HyperTerminal
Datei Bearbeiten Ansicht Anrufen Übertragung ?
Send a file
Stored blocks:33 Type:1
Configuration Upload: Was successfull

Change Setup : 0 Standard IP
               : 7 Factory defaults
               : 8 Exit without save
               : 9 Save and exit
Transfer      :10 Get Setup
               :11 Put Setup
Your choice ? 9

Verbunden 00:13:04  ANSIW  TCP/IP  RF  GROSS  NUM  Aufzeichnen  Druckerecho
```

5. Save the new configuration by pressing 9 and confirm by pressing ENTER.

6. The new configuration is now saved and can be used.



For safety reasons the PPP-Password can not be saved/written via the configuration Up-/Download menu. You can only setup this password via the Web Based Management.