

# A 25 -12 - Ferrule

3200357

<https://www.phoenixcontact.com/gb/products/3200357>



Please be informed that the data shown in this PDF document is generated from our online catalog. Please find the complete data in the user documentation. Our general terms of use for downloads are valid.

Ferrule, Length contact range: 12 mm, sleeve length: 12 mm, color: silver-colored



## Your advantages

- The ferrules without plastic sleeve are made from soft tin-plated electrolytic copper

## Commercial data

Item number	3200357
Packing unit	100 pc
Minimum order quantity	100 pc
Sales key	BH3412
Product key	BH3412
GTIN	4017918094003
Weight per piece (including packing)	0.544 g
Weight per piece (excluding packing)	0.525 g
Customs tariff number	85369010
Country of origin	DE

# A 25 -12 - Ferrule

3200357

<https://www.phoenixcontact.com/gb/products/3200357>



## Technical data

### Product properties

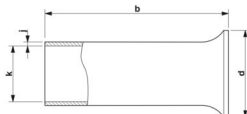
Product type	Cable end sleeve
Conductor category	stranded conductors, class 2, 5, 6 / B, C, K, M
Product property	Made from soft tin-plated electrolytic copper
	Correspond to the requirements of DIN 46228-4 and UL 486F in terms of size
	Long/short-term temperature: +105°C/+120°C

### Connection data

#### Conductor connection

Conductor cross-section flexible max.	25 mm <sup>2</sup>
Conductor cross-section AWG max.	4
Stripping length	12 mm

### Dimensions

Dimensional drawing	
Sleeve length	12 mm
Length contact range	12 mm
Maximum stripping length	12 mm
Ferrule diameter	7.3 mm
Sleeve wall thickness	0.2 mm
Inner dimensions of the insulating collar	9.5 mm

### Material specifications

Color	silver-colored
Material	CU-DHP
Coating	galvanically tin-plated
Surface characteristics	Tin-plated

### Mechanical properties

#### Technical data

Sleeve length	12 mm
---------------	-------

### Environmental and real-life conditions

#### Ambient conditions

Permanent temperature	105 °C
-----------------------	--------

# A 25 -12 - Ferrule

3200357

<https://www.phoenixcontact.com/gb/products/3200357>



Short-term temperature	120 °C
------------------------	--------

# A 25 -12 - Ferrule

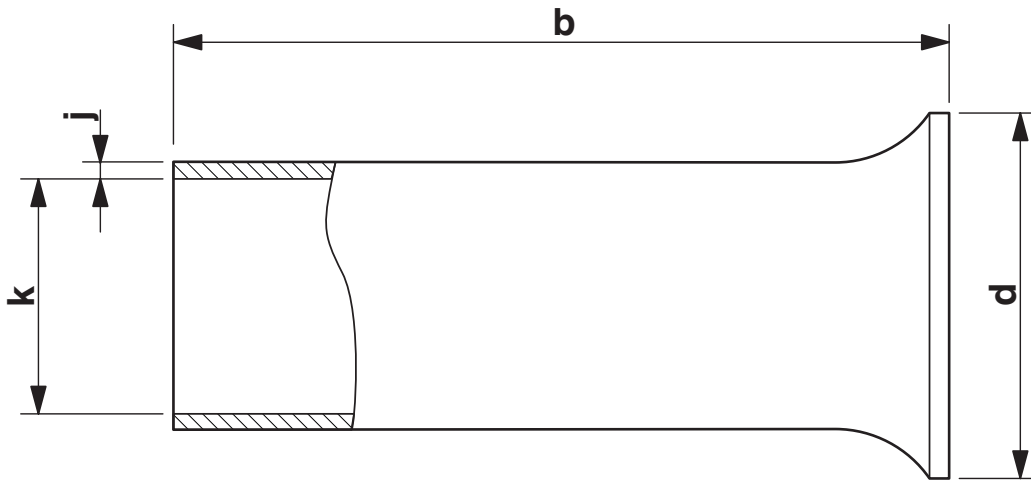
3200357

<https://www.phoenixcontact.com/gb/products/3200357>



## Drawings

Dimensional drawing



Sleeve length (b), insulating collar inner dimension (d), sleeve diameter (k), sleeve wall thickness (j)

# A 25 -12 - Ferrule

3200357

<https://www.phoenixcontact.com/gb/products/3200357>



## Classifications

### ECLASS

ECLASS-13.0	27400201
ECLASS-15.0	27400201

### ETIM

ETIM 10.0	EC000005
-----------	----------

### UNSPSC

UNSPSC 21.0	27121700
-------------	----------

# A 25 -12 - Ferrule

3200357

<https://www.phoenixcontact.com/gb/products/3200357>



## Environmental product compliance

### EU RoHS

Fulfills EU RoHS substance requirements	Yes, No exemptions
---	--------------------

### China RoHS

Environment friendly use period (EFUP)	EFUP-E
	No hazardous substances above the limits

### EU REACH SVHC

REACH candidate substance (CAS No.)	No substance above 0.1 wt%
-------------------------------------	----------------------------

### EF3.1 Climate Change

CO2e kg	0.005 kg CO2e
---------	---------------

Phoenix Contact 2026 © - all rights reserved  
<https://www.phoenixcontact.com>

PHOENIX CONTACT Ltd  
Halesfield 13, Telford  
Shropshire, TF7 4PG  
01952 681700  
[info@phoenixcontact.co.uk](mailto:info@phoenixcontact.co.uk)