

PTFIX 12X2,5-NS35 BU-EX - Distribution block

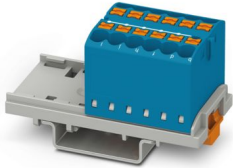


1221413

<https://www.phoenixcontact.com/gb/products/1221413>

Please be informed that the data shown in this PDF document is generated from our online catalog. Please find the complete data in the user documentation. Our general terms of use for downloads are valid.

Distribution block, Ex e certified, mounting type: NS 35/7,5, NS 35/15, color: blue



Your advantages

- Ex e certified
- Flexible use, thanks to DIN rail mounting, direct mounting or adhesive mounting
- Time-saving conductor connection, thanks to tool-free Push-in direct connection technology
- Time savings of up to 80 %, thanks to ready-to-mount blocks without manual bridging
- Space savings of up to 50 % on the DIN rail, thanks to transverse mounting
- Clear wiring, thanks to eleven different color variants

Commercial data

| | |
|--------------------------------------|---------------|
| Item number | 1221413 |
| Packing unit | 8 pc |
| Minimum order quantity | 8 pc |
| Sales key | BEA114 |
| Product key | BEA114 |
| GTIN | 4063151308476 |
| Weight per piece (including packing) | 27.74 g |
| Weight per piece (excluding packing) | 27.4 g |
| Country of origin | PL |

PTFIX 12X2,5-NS35 BU-EX - Distribution block



1221413

<https://www.phoenixcontact.com/gb/products/1221413>

Technical data

Notes

| | |
|--------------------|--|
| Notes on operation | the blocks can be bridged with one another via the conductor shaft, for corresponding plug-in bridges, see accessories |
|--------------------|--|

Product properties

| | |
|----------------|----------------------------|
| Product type | Distributor terminal block |
| Number of rows | 1 |
| Potentials | 1 |

Insulation characteristics

| | |
|----------------------|-----|
| Overvoltage category | III |
| Degree of pollution | 3 |

Electrical properties

| | |
|---|--------|
| Rated surge voltage | 8 kV |
| Maximum power dissipation for nominal condition | 0.77 W |

Connection data

| | |
|------------------|----------------|
| Stripping length | 8 mm ... 10 mm |
|------------------|----------------|

Ex data

Rated data (ATEX/IECEX)

| | |
|-----------------------------|---|
| Identification | Ⓔ II 2 G Ex eb IIC Gb |
| Operating temperature range | -60 °C ... 110 °C |
| Ex-certified accessories | 1204517 SZF 1-0,6X3,5 3022276 CLIPFIX 35-5 3022218 CLIPFIX 35 |
| List of bridges | Plug-in bridge / FBS 2-5 / 3030161 |
| Bridge data | 23 A (2.5 mm ²) |
| Ex temperature increase | 40 K (22.5 A / 2.5 mm ²) |
| Rated insulation voltage | 400 V |
| output | (Permanent) |

Ex level General

| | |
|----------------------|-------------------------------|
| Rated voltage | 440 V |
| Rated current | 22.5 A (2.5 mm ²) |
| Maximum load current | 27 A (4 mm ²) |
| Contact resistance | 0.6 mΩ |

Ex connection data General

| | |
|---------------------------|--|
| Nominal cross section | 2.5 mm ² |
| Rated cross section AWG | 14 |
| Connection capacity rigid | 0.14 mm ² ... 4 mm ² |

PTFIX 12X2,5-NS35 BU-EX - Distribution block



1221413

<https://www.phoenixcontact.com/gb/products/1221413>

| | |
|------------------------------|--|
| Connection capacity AWG | 26 ... 12 |
| Connection capacity flexible | 0.14 mm ² ... 2.5 mm ² |
| Connection capacity AWG | 26 ... 14 |

Dimensions

| | |
|--------------------|---------|
| Width | 28.6 mm |
| Height | 58.1 mm |
| Depth on NS 15 | 30.4 mm |
| Depth on NS 35/7,5 | 32.4 mm |

Material specifications

| | |
|--|-----------------|
| Color | blue (RAL 5015) |
| Flammability rating according to UL 94 | V0 |
| Insulating material group | I |
| Insulating material | PA |

Mechanical properties

Mechanical data

| | |
|-----------------|----|
| Open side panel | No |
|-----------------|----|

Environmental and real-life conditions

Ambient conditions

| | |
|--|--|
| Ambient temperature (operation) | -60 °C ... 110 °C (Operating temperature range incl. self-heating; for max. short-term operating temperature, see RTI Elec.) |
| Ambient temperature (storage/transport) | -25 °C ... 60 °C (for a short time, not exceeding 24 h, -60 °C to +70 °C) |
| Ambient temperature (assembly) | -5 °C ... 70 °C |
| Ambient temperature (actuation) | -5 °C ... 70 °C |
| Permissible humidity (operation) | 20 % ... 90 % |
| Permissible humidity (storage/transport) | 30 % ... 70 % |

Mounting

| | |
|---------------|-----------|
| Mounting type | NS 35/7,5 |
| | NS 35/15 |

PTFIX 12X2,5-NS35 BU-EX - Distribution block

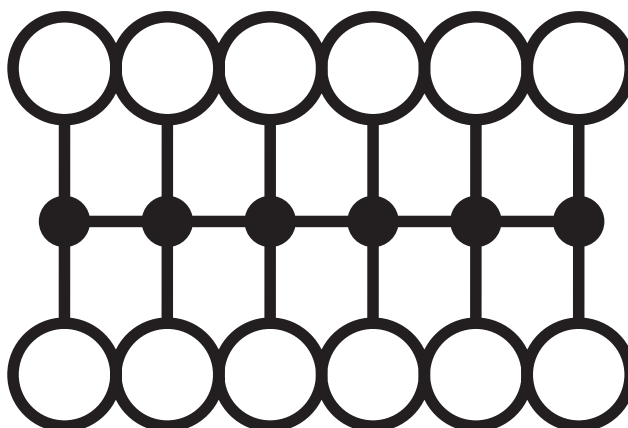
1221413

<https://www.phoenixcontact.com/gb/products/1221413>



Drawings

Circuit diagram



PTFIX 12X2,5-NS35 BU-EX - Distribution block



1221413

<https://www.phoenixcontact.com/gb/products/1221413>

Approvals

To download certificates, visit the product detail page: <https://www.phoenixcontact.com/gb/products/1221413>



IECEx

Approval ID: IECExSEV21.0023U



ATEX

Approval ID: SEV21ATEX0557U



UKCA-EX

Approval ID: CML 22UKEX3672U



CCC

Approval ID: 2026322303007145

PTFIX 12X2,5-NS35 BU-EX - Distribution block



1221413

<https://www.phoenixcontact.com/gb/products/1221413>

Classifications

ECLASS

| | |
|-------------|----------|
| ECLASS-13.0 | 27250118 |
| ECLASS-15.0 | 27250118 |

ETIM

| | |
|-----------|----------|
| ETIM 10.0 | EC000897 |
|-----------|----------|

UNSPSC

| | |
|-------------|----------|
| UNSPSC 21.0 | 39121400 |
|-------------|----------|

PTFIX 12X2,5-NS35 BU-EX - Distribution block



1221413

<https://www.phoenixcontact.com/gb/products/1221413>

Environmental product compliance

EU RoHS

| | |
|---|--------------------|
| Fulfills EU RoHS substance requirements | Yes, No exemptions |
|---|--------------------|

China RoHS

| | |
|--|--|
| Environment friendly use period (EFUP) | EFUP-E |
| | No hazardous substances above the limits |

EU REACH SVHC

| | |
|-------------------------------------|----------------------------|
| REACH candidate substance (CAS No.) | No substance above 0.1 wt% |
|-------------------------------------|----------------------------|

Phoenix Contact 2026 © - all rights reserved
<https://www.phoenixcontact.com>

PHOENIX CONTACT Ltd
Halesfield 13, Telford
Shropshire, TF7 4PG
01952 681700
info@phoenixcontact.co.uk