

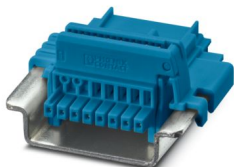
# TBUS8-25,0-PPPPPPP-5015 - DIN rail bus connector



1071426

<https://www.phoenixcontact.com/gb/products/1071426>

Please be informed that the data shown in this PDF document is generated from our online catalog. Please find the complete data in the user documentation. Our general terms of use for downloads are valid.



DIN rail bus connector, color: blue, nominal current: 6 A (parallel contacts), rated voltage (III/2): 32 V, number of positions: 8, product range: TBUS8-25..., pitch: 2.54 mm, mounting: DIN rail mounting, locking: without, mounting method: without, type of packaging: packed in cardboard, Item with gold-plated contacts, bus connectors for connecting with electronics housings, 8 parallel contacts

## Your advantages

- Space-saving installation under the housing in the DIN rail
- Contact design enables electronics modules to be easily snapped on
- Power supply and communication without additional wiring
- Parallel and serial contacts for efficient signal and data transmission

## Commercial data

Item number	1071426
Packing unit	10 pc
Minimum order quantity	10 pc
Note	Made to order (non-returnable)
Sales key	ACHAGA
Product key	ACHAGA
GTIN	4055626758725
Weight per piece (including packing)	5.6 g
Weight per piece (excluding packing)	5.6 g
Customs tariff number	85366990
Country of origin	PL

## Technical data

### Notes

Recommendation	Material of contact pads for bus connector, galvanic gold (hard gold)
----------------	---

### Product properties

Product type	DIN rail bus connector
Product family	TBUS8-25..
Number of positions	8
Pitch	2.54 mm

### Electrical properties

#### Properties

Nominal current $I_N$	6 A (parallel contacts)
Nominal voltage $U_N$	32 V
Rated voltage (III/3)	32 V
Rated surge voltage (III/3)	1.5 kV
Rated voltage (III/2)	32 V
Rated surge voltage (III/2)	1.5 kV
Rated voltage (II/2)	32 V
Rated surge voltage (II/2)	1.5 kV

### Material specifications

#### Material data - contact

Contact material	Cu alloy
Surface characteristics	gold-plated

#### Material data - housing

Color (Housing)	blue (5015)
Insulating material	PA
Insulating material group	I
CTI according to IEC 60112	600
Flammability rating according to UL 94	V0

#### material specifications - connector

Color ()	()
----------	----

### Dimensions

Pitch	2.54 mm
Width [w]	29.3 mm
Height [h]	37.15 mm
Length [l]	16.3 mm

## Mounting

Mounting type	DIN rail mounting
---------------	-------------------

## Environmental and real-life conditions

### Ambient conditions

Ambient temperature (storage/transport)	-40 °C ... 55 °C
Relative humidity (storage/transport)	30 % ... 70 %
Ambient temperature (assembly)	-5 °C ... 100 °C
Ambient temperature (operation)	-40 °C ... 105 °C (dependent on the derating curve)

### Ambient conditions

Ambient temperature (operation)	-40 °C ... 105 °C (dependent on the derating curve)
Ambient temperature (storage/transport)	-40 °C ... 55 °C
Relative humidity (storage/transport)	30 % ... 70 %
Ambient temperature (assembly)	-5 °C ... 100 °C

## Electrical tests

### Air clearances and creepage distances |

Specification	IEC 60664-1:2007-04
Insulating material group	I
Comparative tracking index (IEC 60112)	CTI 600
Rated insulation voltage (III/3)	32 V
Rated surge voltage (III/3)	1.5 kV
minimum clearance value - non-homogenous field (III/3)	0.8 mm
minimum creepage distance (III/3)	1.3 mm
Rated insulation voltage (III/2)	32 V
Rated surge voltage (III/2)	1.5 kV
minimum clearance value - non-homogenous field (III/2)	0.5 mm
minimum creepage distance (III/2)	0.53 mm
Rated insulation voltage (II/2)	32 V
Rated surge voltage (II/2)	1.5 kV
minimum clearance value - non-homogenous field (II/2)	0.5 mm
minimum creepage distance (II/2)	0.53 mm

## Packaging specifications

Type of packaging	packed in cardboard
Outer packaging type	Carton

# TBUS8-25,0-PPPPPPP-5015 - DIN rail bus connector





1071426

<https://www.phoenixcontact.com/gb/products/1071426>

## Approvals

To download certificates, visit the product detail page: <https://www.phoenixcontact.com/gb/products/1071426>

 <b>cUL Recognized</b> Approval ID: E118976-20151204				
	Nominal voltage $U_N$	Nominal current $I_N$	Cross section AWG	Cross section $mm^2$
keine				
Power	29.9 V	4 A	-	-
Signal	29.9 V	4 A	-	-

 <b>UL Recognized</b> Approval ID: E118976-20151204				
	Nominal voltage $U_N$	Nominal current $I_N$	Cross section AWG	Cross section $mm^2$
keine				
Power	29.9 V	6 A	-	-
Signal	29.9 V	4 A	-	-

1071426

<https://www.phoenixcontact.com/gb/products/1071426>

## Classifications

### ECLASS

ECLASS-13.0	27460201
ECLASS-15.0	27460201

### ETIM

ETIM 10.0	EC002637
-----------	----------

### UNSPSC

UNSPSC 21.0	39121400
-------------	----------

1071426

<https://www.phoenixcontact.com/gb/products/1071426>

## Environmental product compliance

### EU RoHS

Fulfills EU RoHS substance requirements	Yes, No exemptions
---	--------------------

### China RoHS

Environment friendly use period (EFUP)	EFUP-E
	No hazardous substances above the limits

### EU REACH SVHC

REACH candidate substance (CAS No.)	No substance above 0.1 wt%
-------------------------------------	----------------------------

### EF3.1 Climate Change

CO2e kg	0.783 kg CO2e
---------	---------------

Phoenix Contact 2026 © - all rights reserved  
<https://www.phoenixcontact.com>

PHOENIX CONTACT Ltd  
Halesfield 13, Telford  
Shropshire, TF7 4PG  
01952 681700  
[info@phoenixcontact.co.uk](mailto:info@phoenixcontact.co.uk)