

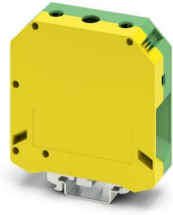
USLKG 95 - Protective conductor terminal block



0441041

<https://www.phoenixcontact.com/gb/products/0441041>

Please be informed that the data shown in this PDF document is generated from our online catalog. Please find the complete data in the user documentation. Our general terms of use for downloads are valid.



Protective conductor terminal block, number of connections: 2, number of positions: 1, connection method: Screw connection, Rated cross section: 95 mm², cross section: 25 mm² - 95 mm², mounting method: PE foot with mounting screw, M8, mounting type: NS 35/7,5, NS 35/15, NS 32, color: green-yellow

Your advantages

- Reliable cable connection is ensured by three-point centering of the conductor in the prismatic sleeve base
- Low contact resistance of the contact surface due to ribbing
- Screw locking by means of spring-loaded elements in the clamping part

Commercial data

| | |
|--------------------------------------|---------------|
| Item number | 0441041 |
| Packing unit | 10 pc |
| Minimum order quantity | 10 pc |
| Sales key | BE1221 |
| Product key | BE1221 |
| GTIN | 4017918002145 |
| Weight per piece (including packing) | 327.4 g |
| Weight per piece (excluding packing) | 318.1 g |
| Customs tariff number | 85369010 |
| Country of origin | PL |

USLKG 95 - Protective conductor terminal block



0441041

<https://www.phoenixcontact.com/gb/products/0441041>

Technical data

Product properties

| | |
|-----------------------|-----------------------|
| Product type | Ground terminal block |
| Product family | USLKG |
| Number of positions | 1 |
| Number of connections | 2 |
| Number of rows | 1 |

Insulation characteristics

| | |
|----------------------|-----|
| Overvoltage category | III |
| Degree of pollution | 3 |

Electrical properties

| | |
|---|--------|
| Rated surge voltage | 8 kV |
| Maximum power dissipation for nominal condition | 7.54 W |

Connection data

| | |
|---------------------------------|--------------------|
| Grounding foot | Yes |
| Number of connections per level | 2 |
| Nominal cross section | 95 mm ² |

Level 1 above 1 below 1

| | |
|---|--|
| Connection method | Screw connection |
| Screw thread | M8 |
| Note | Please observe the current carrying capacity of the DIN rails. |
| Tightening torque | 15 ... 20 Nm |
| Stripping length | 30 mm |
| Connection in acc. with standard | IEC 60947-7-2 |
| Conductor cross-section rigid | 25 mm ² ... 95 mm ² |
| Cross section AWG | 2 ... 3/0 (converted acc. to IEC) |
| Conductor cross-section flexible | 35 mm ² ... 95 mm ² |
| Conductor cross-section, flexible [AWG] | 1/0 ... 3/0 (converted acc. to IEC) |
| Conductor cross-section flexible (ferrule without plastic sleeve) | 35 mm ² ... 95 mm ² |
| Flexible conductor cross-section (ferrule with plastic sleeve) | 35 mm ² ... 95 mm ² |
| Nominal cross section | 95 mm ² |

Ex data

Rated data (ATEX/IECEx)

| | |
|-----------------------------|------------------------|
| Identification | ⊕ II 2 GD Ex eb IIC Gb |
| Operating temperature range | -60 °C ... 110 °C |
| Ex-certified accessories | 1201934 VDE-ISS 6 |
| | 1201659 E/AL-NS 32 |
| | 1201662 E/AL-NS 35 |

USLKG 95 - Protective conductor terminal block



0441041

<https://www.phoenixcontact.com/gb/products/0441041>

| | |
|--------------------------|-----------------|
| Torque range for PE foot | 15 Nm ... 20 Nm |
| output | (Permanent) |

Ex connection data General

| | |
|------------------------------|---|
| Torque range | 15 Nm ... 20 Nm |
| Nominal cross section | 95 mm ² |
| Rated cross section AWG | 3/0 |
| Connection capacity rigid | 25 mm ² ... 95 mm ² |
| Connection capacity AWG | 4 ... 3/0 |
| Connection capacity flexible | 35 mm ² ... 95 mm ² |
| Connection capacity AWG | 2 ... 3/0 |

Dimensions

| | |
|--------------------|---------|
| Width | 25 mm |
| Height | 83 mm |
| Depth on NS 32 | 95 mm |
| Depth on NS 35/7,5 | 90 mm |
| Depth on NS 35/15 | 97.5 mm |

Material specifications

| | |
|---|--------------|
| Color | green-yellow |
| Flammability rating according to UL 94 | V2 |
| Insulating material group | I |
| Insulating material | PA |
| Temperature index of insulation material (DIN EN 60216-1 (VDE 0304-21)) | 125 °C |
| Relative insulation material temperature index (Elec., UL 746 B) | 125 °C |

Mechanical properties

General

| | |
|-------------------------|---|
| Terminal block mounting | 15 Nm ... 20 Nm (PE foot with mounting screw, M8) |
|-------------------------|---|

Mechanical data

| | |
|-----------------|----|
| Open side panel | No |
|-----------------|----|

Environmental and real-life conditions

Ambient conditions

| | |
|--|--|
| Ambient temperature (operation) | -60 °C ... 110 °C (Operating temperature range incl. self-heating; for max. short-term operating temperature, see RTI Elec.) |
| Ambient temperature (storage/transport) | -25 °C ... 60 °C (for a short time, not exceeding 24 h, -60 °C to +70 °C) |
| Ambient temperature (assembly) | -5 °C ... 70 °C |
| Ambient temperature (actuation) | -5 °C ... 70 °C |
| Permissible humidity (operation) | 20 % ... 90 % |
| Permissible humidity (storage/transport) | 30 % ... 70 % |

USLKG 95 - Protective conductor terminal block



0441041

<https://www.phoenixcontact.com/gb/products/0441041>

Standards and regulations

| | |
|----------------------------------|---------------|
| Connection in acc. with standard | IEC 60947-7-2 |
|----------------------------------|---------------|

Mounting

| | |
|-------------------------|---|
| Mounting type | NS 35/7,5 |
| | NS 35/15 |
| | NS 32 |
| Terminal block mounting | 15 Nm ... 20 Nm (PE foot with mounting screw, M8) |

USLKG 95 - Protective conductor terminal block

0441041

<https://www.phoenixcontact.com/gb/products/0441041>

Drawings

Circuit diagram



USLKG 95 - Protective conductor terminal block





0441041

<https://www.phoenixcontact.com/gb/products/0441041>


Approvals


To download certificates, visit the product detail page: <https://www.phoenixcontact.com/gb/products/0441041>

|  CSA Approval ID: 13631 | | | | |
|--|-----------------------|-----------------------|-------------------|----------------------|
| | Nominal voltage U_N | Nominal current I_N | Cross section AWG | Cross section mm^2 |
| keine | - | - | 2 - 4/0 | - |

|  cULus Recognized Approval ID: E60425 | | | | |
|--|-----------------------|-----------------------|-------------------|----------------------|
| | Nominal voltage U_N | Nominal current I_N | Cross section AWG | Cross section mm^2 |
| B | - | - | 2 - 4/0 | - |
| C | - | - | 2 - 4/0 | - |


| DNV Approval ID: TAE00001CT | | | | |
|---------------------------------------|--|--|--|--|
|---------------------------------------|--|--|--|--|

|  ATEX Approval ID: KEMA99ATEX4487U | | | | |
|---|--|--|--|--|
|---|--|--|--|--|

|  cUL Recognized Approval ID: E192998 | | | | |
|---|-----------------------|-----------------------|-------------------|----------------------|
| | Nominal voltage U_N | Nominal current I_N | Cross section AWG | Cross section mm^2 |
| keine | - | - | 2 - 4/0 | - |

|  EAC Ex Approval ID: KZ 7500525010101950 | | | | |
|---|--|--|--|--|
|---|--|--|--|--|

|  IECEX Approval ID: IECEXKEM06.0035U | | | | |
|---|--|--|--|--|
|---|--|--|--|--|

|  UL Recognized Approval ID: E192998 | | | | |
|--|-----------------------|-----------------------|-------------------|----------------------|
| | Nominal voltage U_N | Nominal current I_N | Cross section AWG | Cross section mm^2 |
| keine | - | - | 2 - 4/0 | - |

USLKG 95 - Protective conductor terminal block



0441041

<https://www.phoenixcontact.com/gb/products/0441041>

| | | | | |
|--|---|---|---------|---|
| | - | - | 2 - 4/0 | - |
|--|---|---|---------|---|



CCC

Approval ID: 2020322313000623



UKCA-EX

Approval ID: DEKRA 21UKEX0308U

USLKG 95 - Protective conductor terminal block



0441041

<https://www.phoenixcontact.com/gb/products/0441041>

Classifications

ECLASS

| | |
|-------------|----------|
| ECLASS-13.0 | 27250103 |
| ECLASS-15.0 | 27250103 |

ETIM

| | |
|-----------|----------|
| ETIM 10.0 | EC000901 |
|-----------|----------|

UNSPSC

| | |
|-------------|----------|
| UNSPSC 21.0 | 39121400 |
|-------------|----------|

USLKG 95 - Protective conductor terminal block



0441041

<https://www.phoenixcontact.com/gb/products/0441041>

Environmental product compliance

EU RoHS

| | |
|---|--------------------|
| Fulfills EU RoHS substance requirements | Yes, No exemptions |
|---|--------------------|

China RoHS

| | |
|--|--|
| Environment friendly use period (EFUP) | EFUP-E |
| | No hazardous substances above the limits |

EU REACH SVHC

| | |
|-------------------------------------|----------------------------|
| REACH candidate substance (CAS No.) | No substance above 0.1 wt% |
|-------------------------------------|----------------------------|

EF3.1 Climate Change

| | |
|---------|---------------|
| CO2e kg | 4.537 kg CO2e |
|---------|---------------|

Phoenix Contact 2026 © - all rights reserved
<https://www.phoenixcontact.com>

PHOENIX CONTACT Ltd
Halesfield 13, Telford
Shropshire, TF7 4PG
01952 681700
info@phoenixcontact.co.uk