

OCS MOUNT 1210 SET - Wall bracket



1471782

<https://www.phoenixcontact.com/us/products/1471782>

Please be informed that the data shown in this PDF document is generated from our online catalog. Please find the complete data in the user documentation. Our general terms of use for downloads are valid.

Mounting plate, set of 2 pieces incl. screws for housing size of 12" x 10", material: polycarbonate, color: light gray



Your advantages

- Internationally certified housing system
- Special plastic ensures safe continuous operation
- Provides protection against the ingress of jet water
- Withstands even heavy mechanical strain

Commercial data

Item number	1471782
Packing unit	1 pc
Minimum order quantity	1 pc
Sales key	AC04
Product key	ACFDBZ
GTIN	4063151881320
Weight per piece (including packing)	164.266 g
Weight per piece (excluding packing)	159 g
Customs tariff number	39269097
Country of origin	EE

OCS MOUNT 1210 SET - Wall bracket



1471782

<https://www.phoenixcontact.com/us/products/1471782>

Technical data

Notes

General	Only use the screws supplied for mounting.
General	Secure the mounting feet or flanges using the screws provided. If mounting the housing on a wall, select the appropriate screw type for the wall construction.

Product properties

Product type	Mounting material
Housing type	Outdoor housing
Housing series	OCS

Dimensions

Width	65 mm
Height	255 mm
Depth	8 mm

Material specifications

Flammability rating according to UL 94	V2
Insulating material	PC
Surface characteristics	untreated
Housing material	Polycarbonate

Environmental and real-life conditions

Ambient conditions

Ambient temperature (operation)	-40 °C ... 80 °C
---------------------------------	------------------

Mounting

Mounting type	Screw mounting
---------------	----------------

OCS MOUNT 1210 SET - Wall bracket



1471782

<https://www.phoenixcontact.com/us/products/1471782>

Classifications

ECLASS

ECLASS-11.0	27182702
ECLASS-13.0	27190605

ETIM

ETIM 9.0	EC001031
----------	----------

OCS MOUNT 1210 SET - Wall bracket

1471782

<https://www.phoenixcontact.com/us/products/1471782>

Mandatory accessories

OCS HP 121006 GY7035 - Electronic housing

1471775

<https://www.phoenixcontact.com/us/products/1471775>

Outdoor housing, color: light gray, dimensions: 12" x 10" x 6", incl. corner inlays, cover plugs, screws, cover: light gray, plastic latch, material: PC UV-stabilized

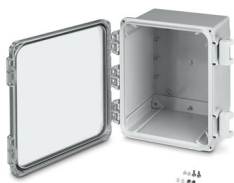


OCS HP 121006 TRANS - Electronic housing

1471776

<https://www.phoenixcontact.com/us/products/1471776>

Outdoor housing, color: light gray, dimensions: 12" x 10" x 6", incl. corner inlays, cover plugs, screws, cover: transparent, plastic latch, material: PC UV-stabilized



Accessories

OCS MOUNT 1210 SET - Wall bracket

1471782

<https://www.phoenixcontact.com/us/products/1471782>



SZK PH2 VDE - Screwdriver

1205163

<https://www.phoenixcontact.com/us/products/1205163>



Screwdriver, PH crosshead, VDE insulated, size: PH 2 x 100 mm, 2-component grip, with non-slip grip

SF-BIT SET - Tool set

1212545

<https://www.phoenixcontact.com/us/products/1212545>



Bit set, with SF-UBH universal bit holder, with 25 mm long bladed/crosshead bits (PZ and PH), 10-part, in compact plastic box

OCS MOUNT 1210 SET - Wall bracket

1471782

<https://www.phoenixcontact.com/us/products/1471782>



SF-PH 2-100 - Screwdriver

1212560

<https://www.phoenixcontact.com/us/products/1212560>



Screwdriver, PH crosshead (lasered), uninsulated, size: PH 2 x 100, 2-component grip, with non-slip grip

Phoenix Contact 2023 © - all rights reserved

<https://www.phoenixcontact.com>

Phoenix Contact USA
586 Fulling Mill Road
Middletown, PA 17057, United States
(+717) 944-1300
info@phoenixcon.com