

MACX MCR-EX-IDS-I-I - Output signal conditioner



2908060

<https://www.phoenixcontact.com/us/products/2908060>

Please be informed that the data shown in this PDF document is generated from our online catalog. Please find the complete data in the user documentation. Our general terms of use for downloads are valid.



Ex i output signal conditioner, HART-transparent. Isolates and transmits 0/4 mA ... 20 mA signals with intrinsic safety to a load in the Ex area. 3-way electrical isolation, line fault detection (can be switched off via DIP switch), SIL 2 (SC3) in accordance with IEC 61508, screw connection.

Commercial data

| | |
|--------------------------------------|---------------|
| Item number | 2908060 |
| Packing unit | 1 pc |
| Minimum order quantity | 1 pc |
| Sales key | C430 |
| Product key | CK3112 |
| GTIN | 4055626274584 |
| Weight per piece (including packing) | 170 g |
| Weight per piece (excluding packing) | 160 g |
| Customs tariff number | 85437090 |
| Country of origin | DE |

MACX MCR-EX-IDS-I-I - Output signal conditioner



2908060

<https://www.phoenixcontact.com/us/products/2908060>

Technical data

Product properties

| | |
|-----------------|---|
| Product type | Output signal conditioner |
| Product family | MACX Analog |
| No. of channels | 1 |
| Type | Ex i signal conditioners with SIL functional safety |
| Configuration | DIP switches |

System properties

Functionality

| | |
|---------------|--------------|
| Configuration | DIP switches |
|---------------|--------------|

Electrical properties

| | |
|----------------------------------|---|
| No. of channels | 1 |
| Electrical isolation | 3-way isolation |
| Signal transmission behavior | In = Out |
| Step response (10-90%) | < 140 μ s (for 4 mA ... 20 mA step) |
| Maximum temperature coefficient | 0.01 %/K |
| Temperature coefficient, typical | \leq 0.005 %/K |
| Maximum transmission error | 0.1 % (of final value) |
| Transmission error, typical | \leq 0.05 % (of final value) |

Electrical isolation

| | |
|----------------------|----|
| Overvoltage category | II |
| Pollution degree | 2 |

Electrical isolation Input/output IEC/EN 61010-1

| | |
|--------------------------|-------------------------|
| Standards/regulations | IEC/EN 61010-1 |
| Rated insulation voltage | 300 V _{rms} |
| Test voltage | 2.5 kV AC (50 Hz, 60 s) |
| Insulation | Safe isolation |

Electrical isolation Input/power supply IEC/EN 61010-1

| | |
|--------------------------|-------------------------|
| Standards/regulations | IEC/EN 61010-1 |
| Rated insulation voltage | 50 V _{rms} |
| Test voltage | 1.5 kV AC (50 Hz, 60 s) |
| Insulation | Basic insulation |

Electrical isolation Output/supply IEC/EN 61010-1

| | |
|--------------------------|-------------------------|
| Standards/regulations | IEC/EN 61010-1 |
| Rated insulation voltage | 300 V _{rms} |
| Test voltage | 2.5 kV AC (50 Hz, 60 s) |
| Insulation | Safe isolation |

MACX MCR-EX-IDS-I-I - Output signal conditioner



2908060

<https://www.phoenixcontact.com/us/products/2908060>

Electrical isolation Output/input IEC/EN 60079-11

| | |
|--------------------------|---------------------|
| Standards/regulations | IEC/EN 60079-11 |
| Rated insulation voltage | 375 V _{PP} |

Electrical isolation Output/supply IEC/EN 60079-11

| | |
|--------------------------|---------------------|
| Standards/regulations | IEC/EN 60079-11 |
| Rated insulation voltage | 375 V _{PP} |

Supply

| | |
|--------------------------|---------------------------|
| Nominal supply voltage | 24 V DC -20 % ... +25 % |
| Supply voltage range | 19.2 V DC ... 30 V DC |
| Max. current consumption | < 45 mA (24 V DC / 20 mA) |
| Power dissipation | < 0.8 W (24 V DC / 20 mA) |
| Power consumption | ≤ 1.1 W (24 V DC / 20 mA) |

Input data

Signal: Current

| | |
|----------------------|--|
| Current input signal | 0 mA ... 20 mA (Function (short-circuit detection off)) |
| | 0.2 mA ... 20 mA (Function (short-circuit detection on)) |
| | 4 mA ... 20 mA (Safety) |
| | 0 mA ... 24 mA (Underload/overload range) |
| Input current | ≤ 30 mA |
| Input impedance | > 1 MΩ (If there is a line fault) |
| Line fault detection | > 0.2 mA (Response threshold of input current) |
| Voltage drop | < 2.4 V (at 20 mA) |

Output data

Signal: Current

| | |
|-----------------------|--|
| Output description | intrinsically safe |
| Number of outputs | 1 |
| Current output signal | 0 mA ... 20 mA (Function (short-circuit detection off)) |
| | 0.2 mA ... 20 mA (Function (short-circuit detection on)) |
| | 4 mA ... 20 mA (Safety) |
| | 0 mA ... 24 mA (Underload/overload range) |
| Load | 100 Ω ... 700 Ω (20 mA (short-circuit detection on)) |
| | 100 Ω ... 650 Ω (20.5 mA (short-circuit detection on)) |
| | 100 Ω ... 500 Ω (24 mA (short-circuit detection on)) |
| | 0 Ω ... 700 Ω (20 mA (short-circuit detection off)) |
| | 0 Ω ... 650 Ω (20.5 mA (short-circuit detection off)) |
| | 0 Ω ... 500 Ω (24 mA (short-circuit detection off)) |
| Output ripple | < 20 mV _{rms} |
| Non-load voltage | ≤ 27 V |
| Line fault detection | > 10 kΩ (Line break) |
| | < 50 Ω (Short circuit) |

MACX MCR-EX-IDS-I-I - Output signal conditioner



2908060

<https://www.phoenixcontact.com/us/products/2908060>

Connection data

| | |
|----------------------------------|---|
| Connection method | Screw connection |
| Stripping length | 7 mm |
| Screw thread | M3 |
| Conductor cross section rigid | 0.2 mm ² ... 2.5 mm ² |
| Conductor cross section flexible | 0.2 mm ² ... 2.5 mm ² |
| Conductor cross section AWG | 24 ... 14 |
| Tightening torque | 0.5 Nm ... 0.6 Nm |

COMBICON connection

| | |
|---------------|------|
| Max. diameter | 2 mm |
|---------------|------|

Ex data

| | |
|-----------------------|--------|
| Ex installation (EPL) | Gc |
| | Div. 2 |
| Ex i circuits (EPL) | Ga |
| | Da |
| | Ma |
| | Div. 1 |

Safety data

| | |
|---|--|
| Max. internal inductance L_i | negligible |
| Max. internal capacitance C_i | negligible |
| Max. output voltage U_o | 25.2 V |
| Max. output current I_o | 93 mA |
| Max. output power P_o | 586 mW |
| Safety-related maximum voltage U_m | 253 V AC |
| | 125 V DC |
| IIA (simple circuit): Max. external inductivity L_o / Max. external capacitance C_o | 10 mH / 2.9 μ F |
| IIB (simple circuit): Max. external inductivity L_o / Max. external capacitance C_o | 4 mH / 817 nF |
| IIC (simple circuit): Max. external inductivity L_o / Max. external capacitance C_o | 2 mH / 104 nF |
| IIA (mixed circuit): Max. external inductivity L_o / Max. external capacitance C_o | 10 mH / 587 nF, 1 mH / 627 nF, 500 μ H / 717 nF, 200 μ H / 907 nF, 100 μ H / 1.1 μ F |
| IIB (mixed circuit): Max. external inductivity L_o / Max. external capacitance C_o | 4 mH / 367 nF, 1 mH / 427 nF, 500 μ H / 507 nF, 200 μ H / 657 nF, 100 μ H / 817 nF |
| IIC (mixed circuit): Max. external inductivity L_o / Max. external capacitance C_o | 2 mH / 46 nF, 1 mH / 60 nF, 500 μ H / 77 nF, 200 μ H / 104 nF |

Interfaces

Data communication (bypass)

| | |
|---------------------|------------------|
| HART function | Yes |
| Protocols supported | HART-transparent |

MACX MCR-EX-IDS-I-I - Output signal conditioner



2908060

<https://www.phoenixcontact.com/us/products/2908060>

Signaling

| | |
|----------------|----------------------------|
| Status display | Green LED (supply voltage) |
|----------------|----------------------------|

Dimensions

| | |
|---------------------|--|
| Dimensional drawing | |
| Width | 12.5 mm |
| Height | 112.5 mm |
| Depth | 113.7 mm |
| Depth NS 35/7,5 | 114.5 mm (Snapped onto DIN rail NS 35/7,5 in accordance with EN 60715) |

Material specifications

| | |
|--|--------------|
| Flammability rating according to UL 94 | V0 (Housing) |
| Housing material | PA 6.6-FR |

Environmental and real-life conditions

Ambient conditions

| | |
|---|--|
| Degree of protection | IP20 |
| Ambient temperature (operation) | -40 °C ... 70 °C (Any mounting position) |
| Ambient temperature (storage/transport) | -40 °C ... 85 °C |
| Permissible humidity (operation) | 5 % ... 95 % (non-condensing) |

Altitude range (≤ 2000 m (Ex))

| | |
|--------------------------------------|--|
| Description | Ex applications |
| Altitude | ≤ 2000 m (The technical data refers to altitudes ≤2000 m above mean sea level. For altitudes >2000 m above mean sea level, refer to the data sheet.) |
| Ambient temperature (operation) | -40 °C ... 70 °C |
| Safety-related maximum voltage U_m | 253 V AC 125 V DC |
| Rated insulation voltage | 320 V (Power supply, input / output) |

Altitude range (≤ 3000 m (Ex))

| | |
|--------------------------------------|--------------------------------------|
| Description | Ex applications |
| Height range | > 2000 m ... 3000 m |
| Ambient temperature (operation) | -40 °C ... 60 °C |
| Safety-related maximum voltage U_m | 190 V AC 110 V DC |
| Rated insulation voltage | 190 V (Power supply, input / output) |

MACX MCR-EX-IDS-I-I - Output signal conditioner



2908060

<https://www.phoenixcontact.com/us/products/2908060>

Altitude range (≤ 4000 m (Ex))

| Description | Ex applications |
|--------------------------------------|-------------------------------------|
| Height range | > 3000 m ... 4000 m |
| Ambient temperature (operation) | -40 °C ... 55 °C |
| Safety-related maximum voltage U_m | 60 V AC 60 V DC |
| Rated insulation voltage | 63 V (Power supply, input / output) |

Altitude range (≤ 5000 m (Ex))

| Description | Ex applications |
|--------------------------------------|-------------------------------------|
| Height range | > 4000 m ... 5000 m |
| Ambient temperature (operation) | -40 °C ... 45 °C |
| Safety-related maximum voltage U_m | 60 V AC 60 V DC |
| Rated insulation voltage | 63 V (Power supply, input / output) |

Altitude range (≤ 2000 m)

| Description | Non-Ex applications (EN 61010-1) |
|---------------------------------|--|
| Altitude | ≤ 2000 m (The technical data refers to altitudes ≤ 2000 m above mean sea level. For altitudes > 2000 m above mean sea level, refer to the data sheet.) |
| Ambient temperature (operation) | -40 °C ... 70 °C |
| Rated insulation voltage | 300 V (Power supply, input / output) |

Altitude range (≤ 3000 m)

| Description | Non-Ex applications (EN 61010-1) |
|---------------------------------|--------------------------------------|
| Height range | > 2000 m ... 3000 m |
| Ambient temperature (operation) | -40 °C ... 60 °C |
| Rated insulation voltage | 150 V (Power supply, input / output) |

Altitude range (≤ 4000 m)

| Description | Non-Ex applications (EN 61010-1) |
|---------------------------------|--------------------------------------|
| Height range | > 3000 m ... 4000 m |
| Ambient temperature (operation) | -40 °C ... 55 °C |
| Rated insulation voltage | 150 V (Power supply, input / output) |

Altitude range (≤ 5000 m)

| Description | Non-Ex applications (EN 61010-1) |
|---------------------------------|--------------------------------------|
| Height range | > 4000 m ... 5000 m |
| Ambient temperature (operation) | -40 °C ... 45 °C |
| Rated insulation voltage | 150 V (Power supply, input / output) |

Approvals

CE

| | |
|-------------|--------------|
| Certificate | CE-compliant |
| Note | and EN 61326 |

MACX MCR-EX-IDS-I-I - Output signal conditioner



2908060

<https://www.phoenixcontact.com/us/products/2908060>

ATEX

| | |
|----------------|-------------------------------------|
| Identification | ⊕ I (M1) [Ex ia Ma] I |
| | ⊕ II (1) G [Ex ia Ga] IIC |
| | ⊕ II (1) D [Ex ia Da] IIIC |
| | ⊕ II 3(1) G Ex ec [ia Ga] IIC T4 Gc |
| Certificate | BVS 20 ATEX E 004 X |

IECEX

| | |
|----------------|-------------------------|
| Identification | [Ex ia Ma] I |
| | [Ex ia Ga] IIC |
| | [Ex ia Da] IIIC |
| | Ex ec [ia Ga] IIC T4 Gc |
| Certificate | IECEX BVS 20.0003X |

CCC / China-Ex

| | |
|----------------|-------------------------|
| Identification | [Ex ia Ga] IIC |
| | [Ex ia Da] IIIC |
| | Ex ec [ia Ga] IIC T4 Gc |
| Certificate | 2021122316114080 |

UL, USA/Canada

| | |
|----------------|--|
| Identification | UL 61010 Listed |
| | Class I Div 2; IS for Class I, II, III Div 1 |
| Certificate | Ⓢ.Ⓢ. C.D.-No 83104549 |

Shipbuilding approval

| | |
|-------------|-------------------|
| Certificate | DNV GL TAA00000AG |
|-------------|-------------------|

Safety Integrity Level (SIL, IEC 61508)

| | |
|----------------|---|
| Identification | 2 |
|----------------|---|

Systematic Capability

| | |
|----------------|---|
| Identification | 3 |
|----------------|---|

INMETRO

| | |
|----------------|-------------------------|
| Identification | [Ex ia Ma] I |
| | [Ex ia Ga] IIC |
| | [Ex ia Da] IIIC |
| | Ex ec [ia Ga] IIC T4 Gc |
| Certificate | DNV 21.0092 X |

EAC

| | |
|----------------|---------------------------|
| Identification | [Ex ia Ga] IIC X |
| | 2Ex e [ia Ga] IIC T4 Gc X |
| Certificate | RU C-DE.HB49.B.00145/21 |

DNV GL data

MACX MCR-EX-IDS-I-I - Output signal conditioner



2908060

<https://www.phoenixcontact.com/us/products/2908060>

| | |
|-------------|---|
| Temperature | B |
| Humidity | B |
| Vibration | A |
| EMC | B |
| Enclosure | Required protection according to the Rules shall be provided upon installation on board |

EMC data

| | |
|-------------------------------|--|
| Noise immunity | EN 61000-6-2 |
| Note | When being exposed to interference, there may be minimal deviations. |
| Electromagnetic compatibility | Conformance with EMC directive |
| Noise emission | EN 61000-6-4 |

Standards and regulations

| | |
|----------------------|-----------------|
| Electrical isolation | 3-way isolation |
|----------------------|-----------------|

GB Standard

| | |
|-----------------------|-------------|
| Standards/regulations | GB/T 3836.1 |
| | GB/T 3836.3 |
| | GB/T 3836.4 |

Mounting

| | |
|---------------|-------------------|
| Mounting type | DIN rail mounting |
|---------------|-------------------|

MACX MCR-EX-IDS-I-I - Output signal conditioner

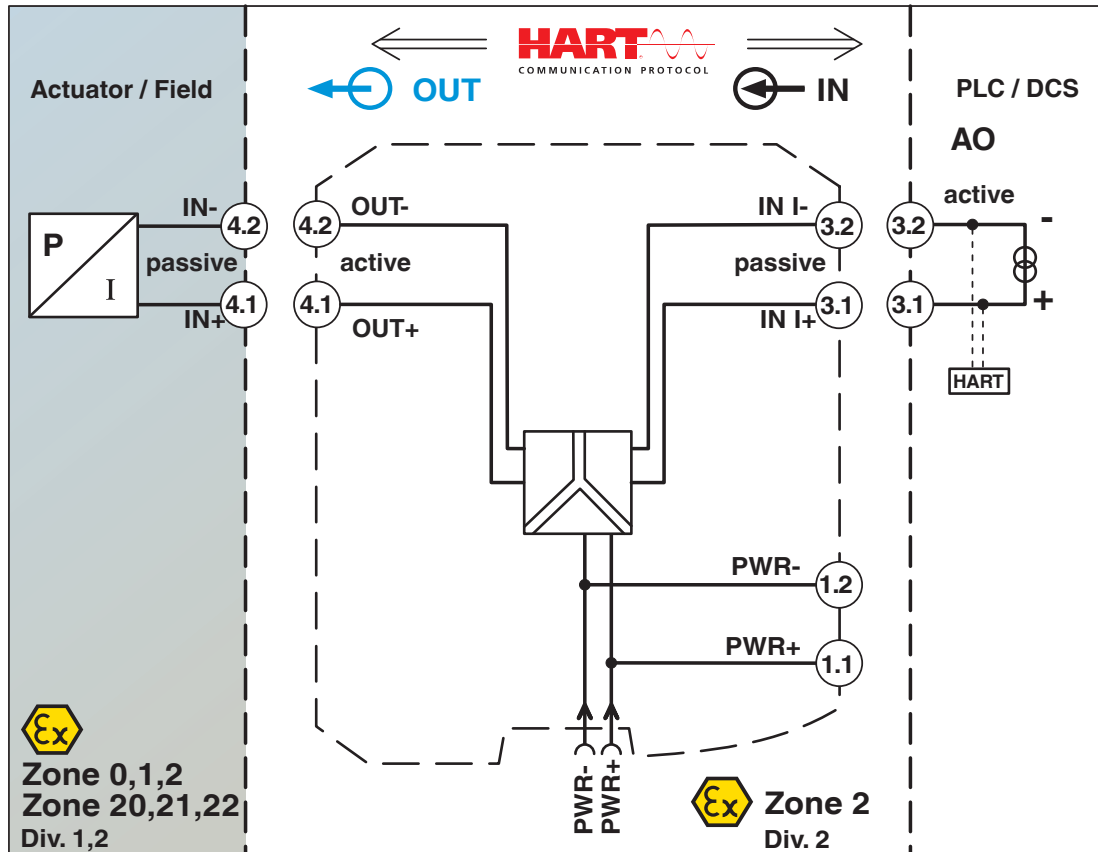


2908060

<https://www.phoenixcontact.com/us/products/2908060>

Drawings

Block diagram



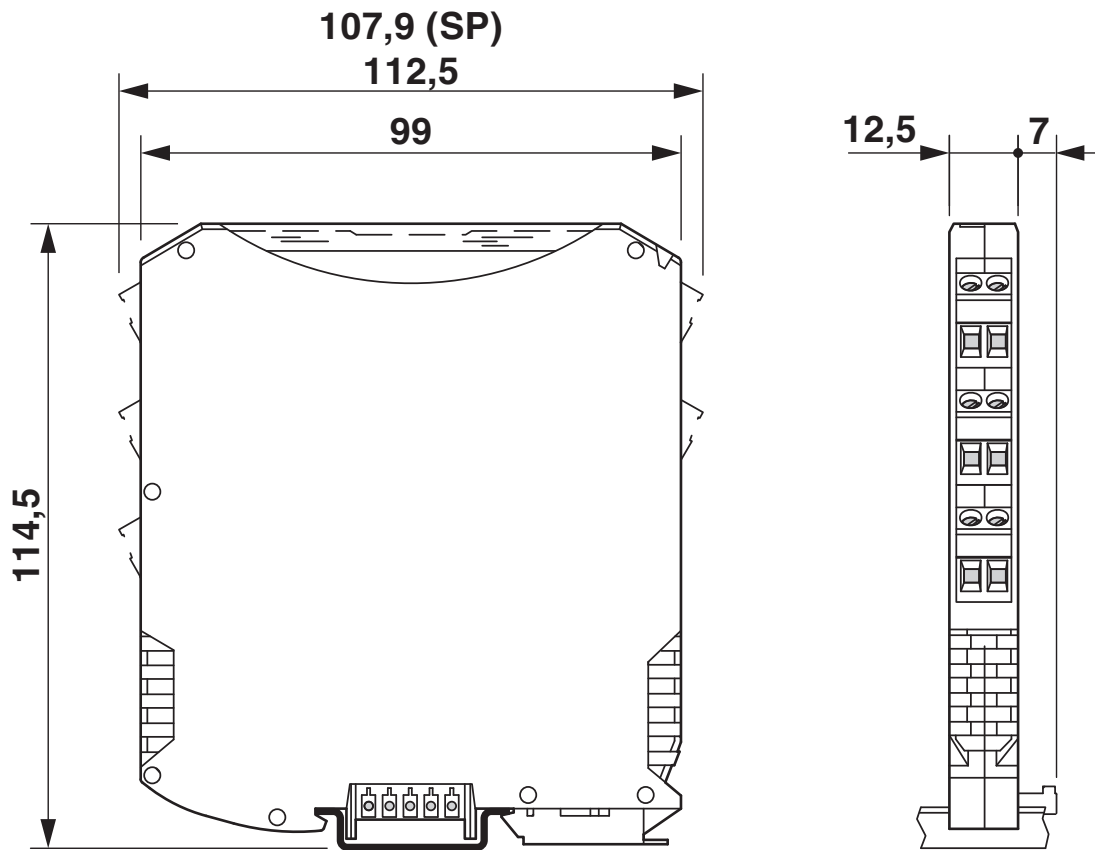
MACX MCR-EX-IDS-I-I - Output signal conditioner

2908060

<https://www.phoenixcontact.com/us/products/2908060>



Dimensional drawing



2908060

<https://www.phoenixcontact.com/us/products/2908060>

Approvals

To download certificates, visit the product detail page: <https://www.phoenixcontact.com/us/products/2908060>



DNV GL

Approval ID: TAA00000AG



UL Listed

Approval ID: FILE E 330267



CCC

Approval ID: 2021122316114080



cUL Listed

Approval ID: FILE E 330267



DNV GL

Approval ID: TAA00000AG

Functional Safety

Approval ID: ZP/C002/20



IECEx

Approval ID: IECEx BVS 20.0003X



cUL Listed

Approval ID: FILE E 199827



UL Listed

Approval ID: FILE E 199827



ATEX

Approval ID: BVS 20 ATEX E 004 X

INMETRO

Approval ID: DNV 21.0092 X

MACX MCR-EX-IDS-I-I - Output signal conditioner



2908060

<https://www.phoenixcontact.com/us/products/2908060>



EAC Ex

Approval ID: RU C-DE.HB49.B.00145

cULus Listed

cULus Listed

MACX MCR-EX-IDS-I-I - Output signal conditioner



2908060

<https://www.phoenixcontact.com/us/products/2908060>

Classifications

ECLASS

| | |
|-------------|----------|
| ECLASS-11.0 | 27210120 |
| ECLASS-12.0 | 27210120 |
| ECLASS-13.0 | 27210120 |

ETIM

| | |
|----------|----------|
| ETIM 8.0 | EC002653 |
|----------|----------|

UNSPSC

| | |
|-------------|----------|
| UNSPSC 21.0 | 39121000 |
|-------------|----------|

MACX MCR-EX-IDS-I-I - Output signal conditioner



2908060

<https://www.phoenixcontact.com/us/products/2908060>

Environmental product compliance

| | |
|------------|--|
| China RoHS | Environmentally Friendly Use Period = 50 years For information on hazardous substances, refer to the manufacturer's declaration available under "Downloads" |
|------------|--|

MACX MCR-EX-IDS-I-I - Output signal conditioner



2908060

<https://www.phoenixcontact.com/us/products/2908060>

Accessories

ME 6,2 TBUS-2 1,5/5-ST-3,81 GY - DIN rail bus connectors

2695439

<https://www.phoenixcontact.com/us/products/2695439>

DIN rail connector (TBUS), 5-pos., for bridging the supply voltage, can be snapped onto NS 35/... DIN rail in accordance with EN 60715



ME 6,2 TBUS-PR-ADAPTER - DIN rail bus connectors

1136500

<https://www.phoenixcontact.com/us/products/1136500>

Power rail adapter (ME 6,2 TBUS-PR-ADAPTER), 2-pos., enables MINI and MACX Analog modules to be adapted for supply via universal power rail UPR-03 and UPR-05.



MACX MCR-EX-IDS-I-I - Output signal conditioner

2908060

<https://www.phoenixcontact.com/us/products/2908060>



MCR-DP - Separating plate

1430594

<https://www.phoenixcontact.com/us/products/1430594>



The partition plate is used to maintain Ex i isolating distances when Ex i and non-Ex i devices are mounted side by side on a DIN rail.

TC-D37SUB-ADIO16-EX-P-UNI - Module carrier

2924854

<https://www.phoenixcontact.com/us/products/2924854>



Universal termination carrier for connecting 16 MACX Analog Ex i signal conditioners to digital or analog I/O cards, via D-SUB connector, 37-pos. (1:1 connection)

MACX MCR-EX-IDS-I-I - Output signal conditioner

2908060

<https://www.phoenixcontact.com/us/products/2908060>



TC-D37SUB-AIO16-EX-PS-UNI - Module carrier

2902932

<https://www.phoenixcontact.com/us/products/2902932>



Universal termination carrier for connecting 16 MACX Analog Ex i signal conditioners to digital or analog I/O cards, via D-SUB connector, 37-pos. (1:1 connection), with HART multiplexer connection

EA-MSTB 2,5/ 5 - Accessories

1831016

<https://www.phoenixcontact.com/us/products/1831016>



Cover for screw shafts of the MSTB connector ranges with a pitch of 5.0 mm and 5.08 mm. These can be aligned and shortened for use with different numbers of positions.

MACX MCR-EX-IDS-I-I - Output signal conditioner

2908060

<https://www.phoenixcontact.com/us/products/2908060>



MACX MCR-PTB - Power and error message module

2865625

<https://www.phoenixcontact.com/us/products/2865625>



Power and fault signaling module with screw connection, including corresponding ME 17,5 TBUS 1,5/ 5-ST-3,81 GY DIN rail connector

MACX MCR-PTB-SP - Power and error message module

2924184

<https://www.phoenixcontact.com/us/products/2924184>



Power and fault signaling module with Push-in connection, including corresponding ME 17,5 TBUS 1,5/ 5-ST-3,81 GY DIN rail connector

MACX MCR-EX-IDS-I-I - Output signal conditioner

2908060

<https://www.phoenixcontact.com/us/products/2908060>



QUINT4-SYS-PS/1AC/24DC/2.5/SC - Power supply unit

2904614

<https://www.phoenixcontact.com/us/products/2904614>



Primary-switched power supply, QUINT POWER, screw connection, DIN rail mounting, supply of devices possible via the TBUS DIN rail connector, protective coating, input: single-phase, output: 24 V DC/2.5 A

MPS-IH WH - Insulating sleeve

0201663

<https://www.phoenixcontact.com/us/products/0201663>

Insulating sleeve, color: white



MACX MCR-EX-IDS-I-I - Output signal conditioner



2908060

<https://www.phoenixcontact.com/us/products/2908060>

MPS-IH RD - Insulating sleeve

0201676

<https://www.phoenixcontact.com/us/products/0201676>

Insulating sleeve, color: red

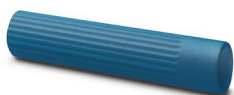


MPS-IH BU - Insulating sleeve

0201689

<https://www.phoenixcontact.com/us/products/0201689>

Insulating sleeve, color: blue



MACX MCR-EX-IDS-I-I - Output signal conditioner



2908060

<https://www.phoenixcontact.com/us/products/2908060>

MPS-IH YE - Insulating sleeve

0201692

<https://www.phoenixcontact.com/us/products/0201692>

Insulating sleeve, color: yellow



MPS-IH GN - Insulating sleeve

0201702

<https://www.phoenixcontact.com/us/products/0201702>

Insulating sleeve, color: green



MACX MCR-EX-IDS-I-I - Output signal conditioner

2908060

<https://www.phoenixcontact.com/us/products/2908060>



MPS-IH GY - Insulating sleeve

0201728

<https://www.phoenixcontact.com/us/products/0201728>

Insulating sleeve, color: gray



MPS-IH BK - Insulating sleeve

0201731

<https://www.phoenixcontact.com/us/products/0201731>

Insulating sleeve, color: black



MACX MCR-EX-IDS-I-I - Output signal conditioner



2908060

<https://www.phoenixcontact.com/us/products/2908060>

MPS-MT - Test plug

0201744

<https://www.phoenixcontact.com/us/products/0201744>



Test plug, with solder connection up to 1 mm² conductor cross section, number of positions: 1, color: gray

UC-EMLP (11X9) - Plastic label

0819291

<https://www.phoenixcontact.com/us/products/0819291>



Plastic label, Sheet, white, unlabeled, can be labeled with: BLUEMARK ID COLOR, BLUEMARK ID, BLUEMARK CLED, PLOTMARK, CMS-P1-PLOTTER, mounting type: adhesive, lettering field size: 11 x 9 mm, Number of individual labels: 10

MACX MCR-EX-IDS-I-I - Output signal conditioner



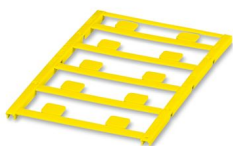
2908060

<https://www.phoenixcontact.com/us/products/2908060>

UC-EMLP (11X9) YE - Plastic label

0822602

<https://www.phoenixcontact.com/us/products/0822602>



Plastic label, Sheet, yellow, unlabeled, can be labeled with: BLUEMARK ID COLOR, BLUEMARK ID, BLUEMARK CLED, PLOTMARK, CMS-P1-PLOTTER, mounting type: adhesive, lettering field size: 11 x 9 mm, Number of individual labels: 10

UC-EMLP (11X9) CUS - Plastic label

0824547

<https://www.phoenixcontact.com/us/products/0824547>



Plastic label, can be ordered: by sheet, white, labeled according to customer specifications, mounting type: adhesive, lettering field size: 11 x 9 mm

MACX MCR-EX-IDS-I-I - Output signal conditioner



2908060

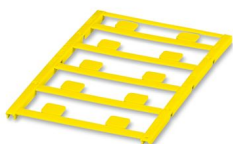
<https://www.phoenixcontact.com/us/products/2908060>

UC-EMLP (11X9) YE CUS - Plastic label

0824548

<https://www.phoenixcontact.com/us/products/0824548>

Plastic label, can be ordered: by sheet, yellow, labeled according to customer specifications, mounting type: adhesive, lettering field size: 11 x 9 mm



UC-EMLP (11X9) SR - Plastic label

0828094

<https://www.phoenixcontact.com/us/products/0828094>

Plastic label, Sheet, silver, unlabeled, can be labeled with: BLUEMARK ID COLOR, BLUEMARK ID, BLUEMARK CLED, PLOTMARK, CMS-P1-PLOTTER, mounting type: adhesive, lettering field size: 11 x 9 mm, Number of individual labels: 10



MACX MCR-EX-IDS-I-I - Output signal conditioner



2908060

<https://www.phoenixcontact.com/us/products/2908060>

UC-EMLP (11X9) SR CUS - Plastic label

0828098

<https://www.phoenixcontact.com/us/products/0828098>



Plastic label, can be ordered: by sheet, silver, labeled according to customer specifications, mounting type: adhesive, lettering field size: 11 x 9 mm, Number of individual labels: 10

US-EMLP (11X9) - Plastic label

0828789

<https://www.phoenixcontact.com/us/products/0828789>



Plastic label, Card, white, unlabeled, can be labeled with: BLUEMARK ID COLOR, BLUEMARK ID, THERMOMARK PRIME, THERMOMARK CARD 2.0, THERMOMARK CARD, mounting type: adhesive, lettering field size: 11 x 9 mm, Number of individual labels: 135

MACX MCR-EX-IDS-I-I - Output signal conditioner



2908060

<https://www.phoenixcontact.com/us/products/2908060>

US-EMLP (11X9) YE - Plastic label

0828871

<https://www.phoenixcontact.com/us/products/0828871>



Plastic label, Card, yellow, unlabeled, can be labeled with: BLUEMARK ID COLOR, BLUEMARK ID, THERMOMARK PRIME, THERMOMARK CARD 2.0, THERMOMARK CARD, mounting type: adhesive, lettering field size: 11 x 9 mm, Number of individual labels: 135

US-EMLP (11X9) SR - Plastic label

0828872

<https://www.phoenixcontact.com/us/products/0828872>



Plastic label, Card, silver, unlabeled, can be labeled with: BLUEMARK ID COLOR, BLUEMARK ID, THERMOMARK PRIME, THERMOMARK CARD 2.0, THERMOMARK CARD, mounting type: adhesive, lettering field size: 11 x 9 mm, Number of individual labels: 135

MACX MCR-EX-IDS-I-I - Output signal conditioner



2908060

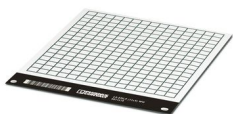
<https://www.phoenixcontact.com/us/products/2908060>

LS-EMLP (11X9) WH - Device marker

0831678

<https://www.phoenixcontact.com/us/products/0831678>

Device marker, Sheet, white, unlabeled, can be labeled with: TOPMARK NEO, TOPMARK LASER, mounting type: adhesive, lettering field size: 11 x 9 mm, Number of individual labels: 255



LS-EMLP (11X9) SR - Device marker

0831705

<https://www.phoenixcontact.com/us/products/0831705>

Device marker, Sheet, silver, unlabeled, can be labeled with: TOPMARK NEO, TOPMARK LASER, mounting type: adhesive, lettering field size: 11 x 9 mm, Number of individual labels: 255



MACX MCR-EX-IDS-I-I - Output signal conditioner



2908060

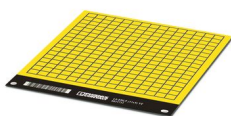
<https://www.phoenixcontact.com/us/products/2908060>

LS-EMLP (11X9) YE - Device marker

0831732

<https://www.phoenixcontact.com/us/products/0831732>

Device marker, Sheet, yellow, unlabeled, can be labeled with: TOPMARK NEO, TOPMARK LASER, mounting type: adhesive, lettering field size: 11 x 9 mm, Number of individual labels: 255



SZS 0,6X3,5 - Screwdriver

1205053

<https://www.phoenixcontact.com/us/products/1205053>

Actuation tool, for ST terminal blocks, insulated, also suitable for use as a bladed screwdriver, size: 0.6 x 3.5 x 100 mm, 2-component grip, with non-slip grip



MACX MCR-EX-IDS-I-I - Output signal conditioner

2908060

<https://www.phoenixcontact.com/us/products/2908060>

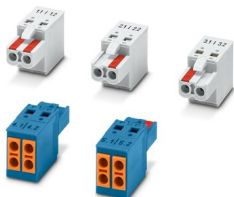


MACX EX-SET-TVFKC 2-POLE - Connector set

1584378

<https://www.phoenixcontact.com/us/products/1584378>

TVFKC plug set for MACX Ex i devices with 2-pos. plugs



Phoenix Contact 2023 © - all rights reserved

<https://www.phoenixcontact.com>

Phoenix Contact USA
586 Fulling Mill Road
Middletown, PA 17057, United States
(+717) 944-1300
info@phoenixcon.com