

OCS POLEFIX 1210 - Mounting material



1476926

<https://www.phoenixcontact.com/us/products/1476926>

Please be informed that the data shown in this PDF document is generated from our online catalog. Please find the complete data in the user documentation. Our general terms of use for downloads are valid.

Mount for mast Ø of 60 mm ... 140 mm, complete set for a housing of 12" x 10", material: steel



Your advantages

- Internationally certified housing system
- Special plastic ensures safe continuous operation
- Provides protection against the ingress of jet water
- Withstands even heavy mechanical strain

Commercial data

Item number	1476926
Packing unit	1 pc
Minimum order quantity	1 pc
Sales key	AC04
Product key	ACFDBZ
GTIN	4063151897307
Weight per piece (including packing)	904.9 g
Weight per piece (excluding packing)	0.836 g
Customs tariff number	73269098
Country of origin	EE

OCS POLEFIX 1210 - Mounting material



1476926

<https://www.phoenixcontact.com/us/products/1476926>

Technical data

Product properties

Product type	Mounting material
Housing type	Outdoor housing
Housing series	OCS

Dimensions

Width	247 mm
Height	376 mm

Material specifications

Color	Silver
Housing material	Steel

Mounting

Mounting type	Mast mounting or wall mounting
---------------	--------------------------------

OCS POLEFIX 1210 - Mounting material



1476926

<https://www.phoenixcontact.com/us/products/1476926>

Classifications

ECLASS

ECLASS-11.0	27182702
ECLASS-13.0	27190605

ETIM

ETIM 9.0	EC001031
----------	----------

OCS POLEFIX 1210 - Mounting material



1476926

<https://www.phoenixcontact.com/us/products/1476926>

Mandatory accessories

OCS HP 121006 GY7035 - Electronic housing

1471775

<https://www.phoenixcontact.com/us/products/1471775>

Outdoor housing, color: light gray, dimensions: 12" x 10" x 6", incl. corner inlays, cover plugs, screws, cover: light gray, plastic latch, material: PC UV-stabilized

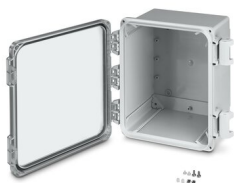


OCS HP 121006 TRANS - Electronic housing

1471776

<https://www.phoenixcontact.com/us/products/1471776>

Outdoor housing, color: light gray, dimensions: 12" x 10" x 6", incl. corner inlays, cover plugs, screws, cover: transparent, plastic latch, material: PC UV-stabilized



Accessories

OCS POLEFIX 1210 - Mounting material



1476926

<https://www.phoenixcontact.com/us/products/1476926>

SF-SLIC 1,6X10-175 - Screwdriver

1212555

<https://www.phoenixcontact.com/us/products/1212555>



Screwdriver, slot-headed, with impact cap, with hexagon wrench aid for open-end wrench and ring wrench, size: 1.6 x 10 x 175 mm, 2-component grip

SF-SLIC 1,2X7,0-125 - Screwdriver

1212554

<https://www.phoenixcontact.com/us/products/1212554>



Screwdriver, slot-headed, with impact cap, with hexagon wrench aid for open-end wrench and ring wrench, size: 1.2 x 7.0 x 125 mm, 2-component grip, with non-slip grip

OCS POLEFIX 1210 - Mounting material



1476926

<https://www.phoenixcontact.com/us/products/1476926>

SF-SOCKET SET 47 - Tool set

1200292

<https://www.phoenixcontact.com/us/products/1200292>



1/4" socket set, 47-piece, 1/4" reversible ratchet, 48 teeth with fast locking system, 50 mm and 100 mm 1/4" extensions, 1/4" screwdriver handle, 150 mm 1/4" flexible extension, 1/4" Cardan joint, 1/4" T-handle
2 x 1/4" bit adapter, 13 knurled 1/4" sockets, wrench size: 4 / 4.5 / 5 / 5.5 / 6 / 7 / 8 / 9 / 10 / 11 / 12 / 13 / 14 mm, 21 knurled socket bits: 6 x Torx[®] T10, T15, T20, T25, T30, T40, 6 x Hex 3, 4, 5, 6, 7, 8 mm, 3 x Phillips recess[®] PH1, PH2, PH3, 3 x Pozidriv[®] PZ1, PZ2, PZ3, 3 x slotted 4, 5.5, 7 mm, Allen wrench Hex 1.27, 1.5, 2, 2.5 mm, breakage and impact-resistant plastic case with metal fastening

Phoenix Contact 2023 © - all rights reserved

<https://www.phoenixcontact.com>

Phoenix Contact USA
586 Fulling Mill Road
Middletown, PA 17057, United States
(+717) 944-1300
info@phoenixcon.com