

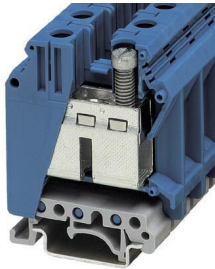
UK 35 BU - Feed-through terminal block



3008025

<https://www.phoenixcontact.com/us/products/3008025>

Please be informed that the data shown in this PDF document is generated from our online catalog. Please find the complete data in the user documentation. Our general terms of use for downloads are valid.



Feed-through terminal block, nom. voltage: 1000 V, nominal current: 125 A, number of connections: 2, connection method: Screw connection, cross section: 0.75 mm² - 50 mm², mounting type: NS 35/7,5, NS 35/15, NS 32, color: blue

Your advantages

- The large wiring space enables the connection of solid and stranded conductors without ferrules, even above the nominal cross section
- As well as saving space, the compact design enables user-friendly wiring in a small amount of space
- Optimum screwdriver guidance through closed screw shafts

Commercial data

Item number	3008025
Packing unit	1 pc
Minimum order quantity	1 pc
Sales key	BE12
Product key	BE1211
Catalog page	Page 213 (CL-2005)
GTIN	4017918091569
Weight per piece (including packing)	57.78 g
Weight per piece (excluding packing)	55.836 g
Customs tariff number	85369010
Country of origin	DE

UK 35 BU - Feed-through terminal block



3008025

<https://www.phoenixcontact.com/us/products/3008025>

Technical data

Product properties

Product type	Feed-through terminal block
Number of connections	2
Number of rows	1
Potentials	1

Insulation characteristics

Overvoltage category	III
Degree of pollution	3

Electrical properties

Rated surge voltage	8 kV
Maximum power dissipation for nominal condition	4.06 W

Connection data

Number of connections per level	2
Nominal cross section	35 mm ²
Rated cross section AWG	2

Level 1 above 1 below 1

Screw thread	M6
Tightening torque	3.2 ... 3.7 Nm
Stripping length	16 mm
Internal cylindrical gage	B9
Connection in acc. with standard	IEC 60947-7-1
Conductor cross section rigid	0.75 mm ² ... 50 mm ²
Cross section AWG	18 ... 2 (converted acc. to IEC)
Conductor cross section flexible	0.75 mm ² ... 35 mm ²
Conductor cross section, flexible [AWG]	18 ... 2 (converted acc. to IEC)
Conductor cross-section flexible (ferrule without plastic sleeve)	0.75 mm ² ... 35 mm ²
Flexible conductor cross section (ferrule with plastic sleeve)	0.75 mm ² ... 35 mm ²
2 conductors with same cross section, solid	0.75 mm ² ... 16 mm ²
2 conductors with same cross section, flexible	0.75 mm ² ... 10 mm ²
2 conductors with same cross section, flexible, with ferrule without plastic sleeve	0.75 mm ² ... 10 mm ²
2 conductors with the same cross section, flexible, with TWIN ferrule with plastic sleeve	0.75 mm ² ... 6 mm ²
Nominal current	125 A
Maximum load current	150 A (with 50 mm ² conductor cross section)
Nominal voltage	1000 V

Ex data

UK 35 BU - Feed-through terminal block



3008025

<https://www.phoenixcontact.com/us/products/3008025>

Rated data (ATEX/IECEX)

Identification	⊕ II 2 GD Ex eb IIC Gb
Operating temperature range	-60 °C ... 110 °C
Ex-certified accessories	3008096 TP-UK 35
	1205079 SZS 1,0X6,5 VDE
	1201442 E/UK
List of bridges	Fixed bridge / FBI 2-15 / 0201333
	Fixed bridge / FBI 3-15 / 0201278
Bridge data	118.5 A / 35 mm ²
List of bridges	Insertion bridge / EB 2-15 K/UK 35 / 0205119
	Insertion bridge / EB 10-15 / 0205135
Bridge data	105.5 A / 35 mm ²
List of bridges	Chain bridge / KBI- 15 / 0205203
Bridge data	116 A / 35 mm ²
Ex temperature increase	40 K (130.5 A / 35 mm ²)
Rated voltage	690 V
at bridging with insertion bridge	690 V
for bridging with bridge	690 V
Rated insulation voltage	630 V
output	(Permanent)

Ex level General

Rated current	118.5 A
Maximum load current	147 A
Contact resistance	0.08 mΩ

Ex connection data General

Torque range	3.2 Nm ... 3.7 Nm
Nominal cross section	35 mm ²
Rated cross section AWG	2
Connection capacity rigid	0.75 mm ² ... 50 mm ²
Connection capacity AWG	18 ... 1/0
Connection capacity flexible	0.75 mm ² ... 35 mm ²
Connection capacity AWG	18 ... 2
2 conductors with same cross section, solid	0.75 mm ² ... 16 mm ²
2 conductors with the same cross-section AWG rigid	18 ... 6
2 conductors with same cross section, stranded	0.75 mm ² ... 10 mm ²
2 conductors with the same cross-section AWG flexible	18 ... 8

Dimensions

Width	15.1 mm
Height	50 mm
Depth on NS 32	67 mm
Depth on NS 35/7,5	62 mm

UK 35 BU - Feed-through terminal block



3008025

<https://www.phoenixcontact.com/us/products/3008025>

Depth on NS 35/15	69.5 mm
-------------------	---------

Material specifications

Color	blue
Flammability rating according to UL 94	V0
Insulating material group	I
Insulating material	PA
Static insulating material application in cold	-60 °C
Temperature index of insulation material (DIN EN 60216-1 (VDE 0304-21))	125 °C
Relative insulation material temperature index (Elec., UL 746 B)	130 °C
Fire protection for rail vehicles (DIN EN 45545-2) R22	HL 1 - HL 3
Fire protection for rail vehicles (DIN EN 45545-2) R23	HL 1 - HL 3
Fire protection for rail vehicles (DIN EN 45545-2) R24	HL 1 - HL 3
Fire protection for rail vehicles (DIN EN 45545-2) R26	HL 1 - HL 3
Calorimetric heat release NFPA 130 (ASTM E 1354)	27,5 MJ/kg
Surface flammability NFPA 130 (ASTM E 162)	passed
Specific optical density of smoke NFPA 130 (ASTM E 662)	passed
Smoke gas toxicity NFPA 130 (SMP 800C)	passed

Mechanical properties

Mechanical data

Open side panel	No
-----------------	----

Environmental and real-life conditions

Ambient conditions

Ambient temperature (storage/transport)	-25 °C ... 60 °C (for a short time, not exceeding 24 h, -60 °C to +70 °C)
Ambient temperature (assembly)	-5 °C ... 70 °C
Ambient temperature (actuation)	-5 °C ... 70 °C
Permissible humidity (storage/transport)	30 % ... 70 %

Standards and regulations

Connection in acc. with standard	IEC 60947-7-1
----------------------------------	---------------

Mounting

Mounting type	NS 35/7,5
	NS 35/15
	NS 32

UK 35 BU - Feed-through terminal block



3008025

<https://www.phoenixcontact.com/us/products/3008025>

Approvals

To download certificates, visit the product detail page: <https://www.phoenixcontact.com/us/products/3008025>

DNV				
Approval ID: TAE00001CT				

CSA				
Approval ID: 13631				
	Nominal voltage U_N	Nominal current I_N	Cross section AWG	Cross section mm^2
Use group B	600 V	150 A	18 - 1/0	-
Use group C	600 V	150 A	18 - 1/0	-
With ATP	1000 V	150 A	18 - 1/0	-

IECEE CB Scheme				
Approval ID: NL-26111				
	Nominal voltage U_N	Nominal current I_N	Cross section AWG	Cross section mm^2
	1000 V	-	-	- 35

cULus Recognized				
Approval ID: E60425				
	Nominal voltage U_N	Nominal current I_N	Cross section AWG	Cross section mm^2
Use group B	600 V	150 A	18 - 1/0	-
Use group C	600 V	150 A	18 - 1/0	-
Use group F	1000 V	150 A	18 - 1/0	-

KEMA-KEUR				
Approval ID: 71-119836				
	Nominal voltage U_N	Nominal current I_N	Cross section AWG	Cross section mm^2
	1000 V	-	-	0.75 - 35

KR				
Approval ID: HMB17372-EL001				

ClassNK NK				
-------------------	--	--	--	--

UK 35 BU - Feed-through terminal block



3008025

<https://www.phoenixcontact.com/us/products/3008025>

Approval ID: 09 ME 141



RS

Approval ID: 22.44.01.00083.250



ATEX

Approval ID: KEMA98ATEX1786U



cUL Recognized

Approval ID: E192998

	Nominal voltage U_N	Nominal current I_N	Cross section AWG	Cross section mm^2
	600 V	150 A	18 - 1/0	-



EAC Ex

Approval ID: RU C-DE.HA91.B.00066



GL

Approval ID: 98876-96 HH

	Nominal voltage U_N	Nominal current I_N	Cross section AWG	Cross section mm^2
EEx e II part certificate	690 V	118.5 A	-	- 35



IECEx

Approval ID: IECEx KEM 06.0029U



UL Recognized

Approval ID: E192998

	Nominal voltage U_N	Nominal current I_N	Cross section AWG	Cross section mm^2
	600 V	150 A	18 - 1/0	-



CCC

Approval ID: 2020322313000623



DNV GL-EX

Approval ID: TAE00003K6

	Nominal voltage U_N	Nominal current I_N	Cross section AWG	Cross section mm^2
EEx e II part certificate	440 V	32 A	-	- 2.5

UK 35 BU - Feed-through terminal block

3008025

<https://www.phoenixcontact.com/us/products/3008025>



cULus Recognized

UK 35 BU - Feed-through terminal block



3008025

<https://www.phoenixcontact.com/us/products/3008025>

Classifications

ECLASS

ECLASS-11.0	27141120
ECLASS-13.0	27250101

ETIM

ETIM 8.0	EC000897
----------	----------

UNSPSC

UNSPSC 21.0	39121400
-------------	----------

UK 35 BU - Feed-through terminal block



3008025

<https://www.phoenixcontact.com/us/products/3008025>

Environmental product compliance

China RoHS	Environmentally friendly use period: unlimited = EFUP-e
	No hazardous substances above threshold values

UK 35 BU - Feed-through terminal block

3008025

<https://www.phoenixcontact.com/us/products/3008025>

Accessories

 Note: Applying some accessories below might limit this product.


FBI 2-15 - Fixed bridge

0201333

<https://www.phoenixcontact.com/us/products/0201333>



Fixed bridge, pitch: 15 mm, number of positions: 2, color: silver

 Max. current carrying capacity: 125 A

FBI 3-15 - Fixed bridge

0201278

<https://www.phoenixcontact.com/us/products/0201278>



Fixed bridge, pitch: 15 mm, number of positions: 3, color: silver

 Max. current carrying capacity: 125 A

UK 35 BU - Feed-through terminal block

3008025

<https://www.phoenixcontact.com/us/products/3008025>




FBI 5-15 - Fixed bridge

0711302

<https://www.phoenixcontact.com/us/products/0711302>



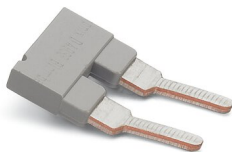
Fixed bridge, pitch: 15 mm, number of positions: 5, color: silver

 Max. current carrying capacity: 125 A


EB 2-15 - Insertion bridge

0203166

<https://www.phoenixcontact.com/us/products/0203166>



Insertion bridge, pitch: 15.25 mm, number of positions: 2, color: gray

 Max. current carrying capacity: 76 A

UK 35 BU - Feed-through terminal block

3008025

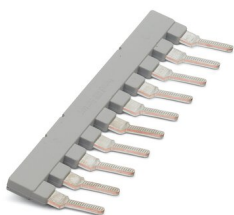
<https://www.phoenixcontact.com/us/products/3008025>




EB 10-15 - Insertion bridge

0205135

<https://www.phoenixcontact.com/us/products/0205135>



Insertion bridge, pitch: 15.25 mm, number of positions: 10, color: gray

 Max. current carrying capacity: 76 A


EB 2-15 K/UK 35 - Insertion bridge

0205119

<https://www.phoenixcontact.com/us/products/0205119>



Insertion bridge, pitch: 15 mm, number of positions: 2, color: gray

 Max. current carrying capacity: 76 A

UK 35 BU - Feed-through terminal block

3008025

<https://www.phoenixcontact.com/us/products/3008025>




EB 3-15 K/UK 35 - Insertion bridge

0205106

<https://www.phoenixcontact.com/us/products/0205106>

Insertion bridge, pitch: 15 mm, number of positions: 3, color: gray



 Max. current carrying capacity: 76 A


EB 10-15 K/UK 35 - Insertion bridge

0205096

<https://www.phoenixcontact.com/us/products/0205096>

Insertion bridge, pitch: 15 mm, number of positions: 10, color: gray



 Max. current carrying capacity: 76 A

UK 35 BU - Feed-through terminal block

3008025

<https://www.phoenixcontact.com/us/products/3008025>




SBH 2-15 - Switching jumper

0205232

<https://www.phoenixcontact.com/us/products/0205232>



Switching jumper, pitch: 15 mm, number of positions: 2, color: silver

 Max. current carrying capacity: 120 A

WS 5-15 - Warning label

1004445

<https://www.phoenixcontact.com/us/products/1004445>

Warning label, Plate, orange, labeled: Lightning flash and warning in English, mounting type: plug in, for terminal block width: 15 mm, diameter: 0 mm



UK 35 BU - Feed-through terminal block

3008025

<https://www.phoenixcontact.com/us/products/3008025>



WS 4-15 - Warning label

1004241

<https://www.phoenixcontact.com/us/products/1004241>

Warning label, Plate, orange, labeled: Lightning flash and warning in English, mounting type: plug in, for terminal block width: 15 mm, diameter: 0 mm



STL 35/10 - Step bracket

0204084

<https://www.phoenixcontact.com/us/products/0204084>

Step bracket, number of positions: 2, color: silver



UK 35 BU - Feed-through terminal block

3008025

<https://www.phoenixcontact.com/us/products/3008025>



STL 35/ 5 - Step bracket

0204107

<https://www.phoenixcontact.com/us/products/0204107>



Step bracket, pitch: 5 mm, number of positions: 2, color: silver

STL 35/16 - Step bracket

0204097

<https://www.phoenixcontact.com/us/products/0204097>



Step bracket, number of positions: 2, color: silver

UK 35 BU - Feed-through terminal block

3008025

<https://www.phoenixcontact.com/us/products/3008025>



TS-K - Separating plate

1302215

<https://www.phoenixcontact.com/us/products/1302215>



Separating plate, width: 0.5 mm, height: 22 mm, color: gray

TP-UK 35 - Separating plate

3008096

<https://www.phoenixcontact.com/us/products/3008096>



Separating plate, width: 7.5 mm, height: 50 mm, color: gray

UK 35 BU - Feed-through terminal block

3008025

<https://www.phoenixcontact.com/us/products/3008025>



NS 32 PERF 2000MM-VPE 10 - DIN rail perforated

1201002

<https://www.phoenixcontact.com/us/products/1201002>



DIN rail perforated, Pack of 10 (20 m), acc. to EN 60715, material: Steel, galvanized, passivated with a thick layer, G profile, color: silver

NS 32 UNPERF 2000MM-VPE 10 - DIN rail, unperforated

1201015

<https://www.phoenixcontact.com/us/products/1201015>



DIN rail, unperforated, Pack of 10 (20 m), acc. to EN 60715, material: Steel, galvanized, passivated with a thick layer, G profile, color: silver

UK 35 BU - Feed-through terminal block

3008025

<https://www.phoenixcontact.com/us/products/3008025>



NS 35/ 7,5 PERF 2000MM - DIN rail perforated

0801733

<https://www.phoenixcontact.com/us/products/0801733>



DIN rail perforated, Pack of 25 (50 m), acc. to EN 60715, material: Steel, galvanized, passivated with a thick layer, Standard profile, color: silver

NS 35/ 7,5 UNPERF 2000MM - DIN rail, unperforated

0801681

<https://www.phoenixcontact.com/us/products/0801681>



DIN rail, unperforated, Pack of 25 (50 m), acc. to EN 60715, material: Steel, galvanized, passivated with a thick layer, Standard profile, color: silver

UK 35 BU - Feed-through terminal block



3008025

<https://www.phoenixcontact.com/us/products/3008025>

NS 35/ 7,5 WH PERF 2000MM - DIN rail perforated

1204119

<https://www.phoenixcontact.com/us/products/1204119>



DIN rail perforated, Pack of 25 (50 m), acc. to EN 60715, material: Steel, Galvanized, white passivated, Standard profile, color: silver

NS 35/ 7,5 WH UNPERF 2000MM-VPE 10 - DIN rail, unperforated

1204122

<https://www.phoenixcontact.com/us/products/1204122>



DIN rail, unperforated, Pack of 10 (20 m), acc. to EN 60715, material: Steel, Galvanized, white passivated, Standard profile, color: silver

UK 35 BU - Feed-through terminal block

3008025

<https://www.phoenixcontact.com/us/products/3008025>



NS 35/ 7,5 AL UNPERF 2000MM - DIN rail, unperforated

0801704

<https://www.phoenixcontact.com/us/products/0801704>



DIN rail, unperforated, Pack of 25 (50 m), acc. to EN 60715, material: Aluminum, uncoated, Standard profile, color: silver

NS 35/ 7,5 ZN PERF 2000MM - DIN rail perforated

1206421

<https://www.phoenixcontact.com/us/products/1206421>



DIN rail perforated, Pack of 25 (50 m), acc. to EN 60715, material: Steel, galvanized, Standard profile, color: silver

UK 35 BU - Feed-through terminal block

3008025

<https://www.phoenixcontact.com/us/products/3008025>



NS 35/ 7,5 ZN UNPERF 2000MM - DIN rail, unperforated

1206434

<https://www.phoenixcontact.com/us/products/1206434>



DIN rail, unperforated, Pack of 25 (50 m), acc. to EN 60715, material: Steel, galvanized, Standard profile, color: silver

NS 35/ 7,5 CU UNPERF 2000MM-VPE 10 - DIN rail, unperforated

0801762

<https://www.phoenixcontact.com/us/products/0801762>



DIN rail, unperforated, Pack of 10 (20 m), acc. to EN 60715, material: Copper, uncoated, Standard profile, color: copper-colored

UK 35 BU - Feed-through terminal block

3008025

<https://www.phoenixcontact.com/us/products/3008025>



NS 35/ 7,5 CAP - End cap

1206560

<https://www.phoenixcontact.com/us/products/1206560>

DIN rail end piece, for DIN rail NS 35/7.5



NS 35/15 PERF 2000MM - DIN rail perforated

1201730

<https://www.phoenixcontact.com/us/products/1201730>



DIN rail perforated, Pack of 25 (50 m), similar to EN 60715, material: Steel, galvanized, passivated with a thick layer, Standard profile, color: silver

UK 35 BU - Feed-through terminal block

3008025

<https://www.phoenixcontact.com/us/products/3008025>



NS 35/15 UNPERF 2000MM - DIN rail, unperforated

1201714

<https://www.phoenixcontact.com/us/products/1201714>



DIN rail, unperforated, Pack of 25 (50 m), similar to EN 60715, material: Steel, galvanized, passivated with a thick layer, Standard profile, color: silver

NS 35/15 WH PERF 2000MM - DIN rail perforated

0806602

<https://www.phoenixcontact.com/us/products/0806602>



DIN rail perforated, Pack of 25 (50 m), similar to EN 60715, material: Steel, Galvanized, white passivated, Standard profile, color: white

UK 35 BU - Feed-through terminal block

3008025

<https://www.phoenixcontact.com/us/products/3008025>



NS 35/15 WH UNPERF 2000MM-VPE 10 - DIN rail, unperforated

1204135

<https://www.phoenixcontact.com/us/products/1204135>



DIN rail, unperforated, Pack of 10 (20 m), similar to EN 60715, material: Steel, Galvanized, white passivated, Standard profile, color: silver

NS 35/15 AL UNPERF 2000MM - DIN rail, unperforated

1201756

<https://www.phoenixcontact.com/us/products/1201756>



DIN rail, unperforated, similar to EN 60715, material: Aluminum, uncoated, Standard profile, color: silver

UK 35 BU - Feed-through terminal block

3008025

<https://www.phoenixcontact.com/us/products/3008025>



NS 35/15 ZN PERF 2000MM - DIN rail perforated

1206599

<https://www.phoenixcontact.com/us/products/1206599>



DIN rail perforated, Pack of 25 (50 m), similar to EN 60715, material: Steel, galvanized, Standard profile, color: silver

NS 35/15 ZN UNPERF 2000MM - DIN rail, unperforated

1206586

<https://www.phoenixcontact.com/us/products/1206586>



DIN rail, unperforated, Pack of 25 (50 m), similar to EN 60715, material: Steel, galvanized, Standard profile, color: silver

UK 35 BU - Feed-through terminal block

3008025

<https://www.phoenixcontact.com/us/products/3008025>



NS 35/15 CU UNPERF 2000MM-VPE 10 - DIN rail, unperforated

1201895

<https://www.phoenixcontact.com/us/products/1201895>



DIN rail, unperforated, Pack of 10 (20 m), similar to EN 60715, material: Copper, uncoated, Standard profile, color: copper-colored

NS 35/15 CAP - End cap

1206573

<https://www.phoenixcontact.com/us/products/1206573>

DIN rail end piece, for DIN rail NS 35/15



UK 35 BU - Feed-through terminal block

3008025

<https://www.phoenixcontact.com/us/products/3008025>



NS 35/15-2,3 UNPERF 2000MM-VPE 10 - DIN rail, unperforated

1201798

<https://www.phoenixcontact.com/us/products/1201798>

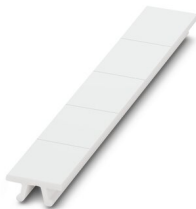


DIN rail, unperforated, Pack of 10 (20 m), acc. to EN 60715, material: Steel, galvanized, passivated with a thick layer, Standard profile 2.3 mm, color: silver

ZB 15:UNBEDRUCKT - Zack marker strip

0811972

<https://www.phoenixcontact.com/us/products/0811972>



Zack marker strip, Strip, white, unlabeled, can be labeled with: PLOTMARK, CMS-P1-PLOTTER, mounting type: snapped, for terminal block width: 15.2 mm, lettering field size: 10.5 x 15.1 mm, Number of individual labels: 5

UK 35 BU - Feed-through terminal block



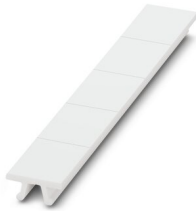
3008025

<https://www.phoenixcontact.com/us/products/3008025>

ZB 15 CUS - Zack marker strip

0824945

<https://www.phoenixcontact.com/us/products/0824945>

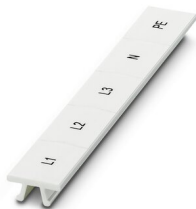


Zack marker strip, can be ordered: Strip, white, labeled according to customer specifications, mounting type: snap into tall marker groove, for terminal block width: 15.2 mm, lettering field size: 10.5 x 15.1 mm, Number of individual labels: 5

ZB 15,LGS:L1-N,PE - Zack marker strip

0811998

<https://www.phoenixcontact.com/us/products/0811998>



Zack marker strip, Strip, white, labeled, printed horizontally: L1, L2, L3, N, PE, mounting type: snapped, for terminal block width: 15.2 mm, lettering field size: 10.5 x 15.1 mm, Number of individual labels: 5

UK 35 BU - Feed-through terminal block

3008025

<https://www.phoenixcontact.com/us/products/3008025>



PS-MT - Test plug

0311647

<https://www.phoenixcontact.com/us/products/0311647>



Test plug, number of positions: 1, color: silver

PS-IH WH - Insulating sleeve

0311566

<https://www.phoenixcontact.com/us/products/0311566>



Insulating sleeve, number of positions: 1, color: white

UK 35 BU - Feed-through terminal block



3008025

<https://www.phoenixcontact.com/us/products/3008025>

PS-IH RD - Insulating sleeve

0311579

<https://www.phoenixcontact.com/us/products/0311579>



Insulating sleeve, number of positions: 1, color: red

PS-IH BU - Insulating sleeve

0311582

<https://www.phoenixcontact.com/us/products/0311582>



Insulating sleeve, number of positions: 1, color: blue

UK 35 BU - Feed-through terminal block

3008025

<https://www.phoenixcontact.com/us/products/3008025>



PS-IH YE - Insulating sleeve

0311595

<https://www.phoenixcontact.com/us/products/0311595>



Insulating sleeve, number of positions: 1, color: yellow

PS-IH GN - Insulating sleeve

0311605

<https://www.phoenixcontact.com/us/products/0311605>



Insulating sleeve, number of positions: 1, color: green

UK 35 BU - Feed-through terminal block

3008025

<https://www.phoenixcontact.com/us/products/3008025>



PS-IH GY - Insulating sleeve

0311621

<https://www.phoenixcontact.com/us/products/0311621>



Insulating sleeve, number of positions: 1, color: gray

PS-IH BK - Insulating sleeve

0311634

<https://www.phoenixcontact.com/us/products/0311634>



Insulating sleeve, number of positions: 1, color: black

UK 35 BU - Feed-through terminal block

3008025

<https://www.phoenixcontact.com/us/products/3008025>



PS-IH VT - Insulating sleeve

0311618

<https://www.phoenixcontact.com/us/products/0311618>



Insulating sleeve, number of positions: 1, color: violet

CLIPFIX 35 - End bracket

3022218

<https://www.phoenixcontact.com/us/products/3022218>



Quick mounting end clamp for NS 35/7,5 DIN rail or NS 35/15 DIN rail, with marking option, width: 9.5 mm, color: gray

UK 35 BU - Feed-through terminal block

3008025

<https://www.phoenixcontact.com/us/products/3008025>



CLIPFIX 35-5 - End bracket

3022276

<https://www.phoenixcontact.com/us/products/3022276>

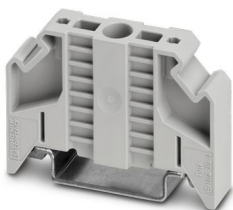


Quick mounting end clamp for NS 35/7,5 DIN rail or NS 35/15 DIN rail, with marking option, with parking option for FBS...5, FBS...6, KSS 5, KSS 6, width: 5.15 mm, color: gray

E/NS 35 N - End bracket

0800886

<https://www.phoenixcontact.com/us/products/0800886>



End clamp, width: 9.5 mm, color: gray

UK 35 BU - Feed-through terminal block

3008025

<https://www.phoenixcontact.com/us/products/3008025>

E/UK - End bracket

1201442

<https://www.phoenixcontact.com/us/products/1201442>

End bracket, Mounting on a DIN rail NS 32 or NS 35, material: PA, color: gray



E/UK 1 - End bracket

1201413

<https://www.phoenixcontact.com/us/products/1201413>

End clamps, for supporting the ends of double-level and three-level terminal blocks, width: 10 mm, color: gray



UK 35 BU - Feed-through terminal block

3008025

<https://www.phoenixcontact.com/us/products/3008025>



PSB 6/5/6 - Female test connector

0205290

<https://www.phoenixcontact.com/us/products/0205290>

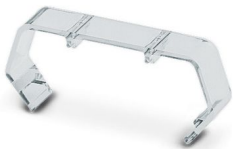


Female test connector, number of positions: 1, color: silver

EA 11 - Cover

1024263

<https://www.phoenixcontact.com/us/products/1024263>



Single cover, for covering one terminal block, snap fit, cannot be labeled, color: transparent

UK 35 BU - Feed-through terminal block

3008025

<https://www.phoenixcontact.com/us/products/3008025>



SZS 1,0X6,5 VDE - Screwdriver

1205079

<https://www.phoenixcontact.com/us/products/1205079>



Screwdriver, slot-headed, VDE insulated, size: 1.0 x 6.5 x 150 mm, 2-component grip, with non-slip grip

Phoenix Contact 2023 © - all rights reserved

<https://www.phoenixcontact.com>

Phoenix Contact USA
586 Fulling Mill Road
Middletown, PA 17057, United States
(+717) 944-1300
info@phoenixcon.com