

UK 1,5 N BU - Feed-through terminal block



3005840

<https://www.phoenixcontact.com/us/products/3005840>

Please be informed that the data shown in this PDF document is generated from our online catalog. Please find the complete data in the user documentation. Our general terms of use for downloads are valid.



Feed-through terminal block, nom. voltage: 500 V, nominal current: 17.5 A, number of connections: 2, connection method: Screw connection, Rated cross section: 1.5 mm², cross section: 0.14 mm² - 1.5 mm², mounting type: NS 35/7,5, NS 35/15, NS 32, color: blue

Your advantages

- Universal foot which can be used on NS 35... and NS 32... DIN rails
- The UK universal screw terminal block series has the typical features which are decisive for practical applications
- Potential distribution via fixed bridges in the terminal center or insertion bridges in the clamping space

Commercial data

| | |
|--------------------------------------|---------------------|
| Item number | 3005840 |
| Packing unit | 1 pc |
| Minimum order quantity | 1 pc |
| Sales key | BE12 |
| Product key | BE1211 |
| Catalog page | Page 458 (C-1-2019) |
| GTIN | 4017918138936 |
| Weight per piece (including packing) | 5.103 g |
| Weight per piece (excluding packing) | 4.72 g |
| Customs tariff number | 85369010 |
| Country of origin | CN |

UK 1,5 N BU - Feed-through terminal block



3005840

<https://www.phoenixcontact.com/us/products/3005840>

Technical data

Product properties

| | |
|-----------------------|-----------------------------|
| Product type | Feed-through terminal block |
| Number of connections | 2 |
| Number of rows | 1 |
| Potentials | 1 |

Insulation characteristics

| | |
|----------------------|-----|
| Overvoltage category | III |
| Degree of pollution | 3 |

Electrical properties

| | |
|---|--------|
| Rated surge voltage | 6 kV |
| Maximum power dissipation for nominal condition | 0.56 W |

Connection data

| | |
|---------------------------------|---------------------|
| Number of connections per level | 2 |
| Nominal cross section | 1.5 mm ² |

Level 1 above 1 below 1

| | |
|---|---|
| Screw thread | M2 |
| Tightening torque | 0.22 ... 0.25 Nm |
| Stripping length | 7 mm |
| Internal cylindrical gage | A1 |
| Connection in acc. with standard | IEC 60947-7-1 |
| Conductor cross section rigid | 0.14 mm ² ... 1.5 mm ² |
| Cross section AWG | 26 ... 16 (converted acc. to IEC) |
| Conductor cross section flexible | 0.14 mm ² ... 1.5 mm ² |
| Conductor cross section, flexible [AWG] | 26 ... 16 (converted acc. to IEC) |
| Conductor cross-section flexible (ferrule without plastic sleeve) | 0.25 mm ² ... 0.75 mm ² |
| Flexible conductor cross section (ferrule with plastic sleeve) | 0.25 mm ² ... 0.75 mm ² |
| 2 conductors with same cross section, solid | 0.14 mm ² ... 0.75 mm ² |
| 2 conductors with same cross section, flexible | 0.14 mm ² ... 0.75 mm ² |
| 2 conductors with same cross section, flexible, with ferrule without plastic sleeve | 0.25 mm ² ... 0.34 mm ² |
| 2 conductors with the same cross section, flexible, with TWIN ferrule with plastic sleeve | 0.5 mm ² ... 0.5 mm ² |
| Nominal current | 17.5 A |
| Maximum load current | 17.5 A (with 1.5 mm ² conductor cross section) |
| Nominal voltage | 500 V |
| Nominal cross section | 1.5 mm ² |

Ex data

UK 1,5 N BU - Feed-through terminal block



3005840

<https://www.phoenixcontact.com/us/products/3005840>

Rated data (ATEX/IECEX)

| | |
|--|--|
| Identification | ⊕ II 2 GD Ex eb IIC Gb |
| Operating temperature range | -60 °C ... 110 °C |
| Ex-certified accessories | 3001022 D-UK 2,5 1205037 SZS 0,4X2,5 VDE 1201442 E/UK |
| List of bridges | Fixed bridge / FBRN 10-4 N / 3001624 Fixed bridge / FBRN 20-4 N / 3001637 |
| Bridge data | 15.5 A / 1.5 mm ² |
| Ex temperature increase | 40 K (17.5 A / 1.5 mm ²) |
| Rated voltage | 352 V |
| for bridging with bridge | 352 V |
| - At bridging between non-adjacent terminal blocks | 69 V |
| Rated insulation voltage | 320 V |
| output | (Permanent) |

Ex level General

| | |
|----------------------|---------|
| Rated current | 15.5 A |
| Maximum load current | 15.5 A |
| Contact resistance | 0.45 mΩ |

Ex connection data General

| | |
|---|---|
| Torque range | 0.22 Nm ... 0.25 Nm |
| Nominal cross section | 1.5 mm ² |
| Rated cross section AWG | 16 |
| Connection capacity rigid | 0.14 mm ² ... 1.5 mm ² |
| Connection capacity AWG | 26 ... 16 |
| Connection capacity flexible | 0.14 mm ² ... 1.5 mm ² |
| Connection capacity AWG | 26 ... 16 |
| 2 conductors with same cross section, solid | 0.14 mm ² ... 0.75 mm ² |
| 2 conductors with the same cross-section AWG rigid | 26 ... 18 |
| 2 conductors with same cross section, stranded | 0.14 mm ² ... 0.75 mm ² |
| 2 conductors with the same cross-section AWG flexible | 26 ... 18 |

Dimensions

| | |
|-----------------|--------|
| Width | 4.2 mm |
| End cover width | 1.5 mm |

Material specifications

| | |
|---|--------|
| Color | blue |
| Flammability rating according to UL 94 | V0 |
| Insulating material group | I |
| Insulating material | PA |
| Static insulating material application in cold | -60 °C |
| Temperature index of insulation material (DIN EN 60216-1 (VDE | 130 °C |

UK 1,5 N BU - Feed-through terminal block



3005840

<https://www.phoenixcontact.com/us/products/3005840>

| | |
|--|-------------|
| 0304-21)) | |
| Relative insulation material temperature index (Elec., UL 746 B) | 130 °C |
| Fire protection for rail vehicles (DIN EN 45545-2) R22 | HL 1 - HL 3 |
| Fire protection for rail vehicles (DIN EN 45545-2) R23 | HL 1 - HL 3 |
| Fire protection for rail vehicles (DIN EN 45545-2) R24 | HL 1 - HL 3 |
| Fire protection for rail vehicles (DIN EN 45545-2) R26 | HL 1 - HL 3 |
| Calorimetric heat release NFPA 130 (ASTM E 1354) | 28 MJ/kg |
| Surface flammability NFPA 130 (ASTM E 162) | passed |
| Specific optical density of smoke NFPA 130 (ASTM E 662) | passed |
| Smoke gas toxicity NFPA 130 (SMP 800C) | passed |

Electrical tests

Surge voltage test

| | |
|-----------------------|-------------|
| Test voltage setpoint | 7.3 kV |
| Result | Test passed |

Temperature-rise test

| | |
|--|-------------------------------------|
| Requirement temperature-rise test | Increase in temperature \leq 45 K |
| Result | Test passed |
| Short-time withstand current 1.5 mm ² | 0.18 kA |
| Result | Test passed |

Power-frequency withstand voltage

| | |
|-----------------------|-------------|
| Test voltage setpoint | 1.89 kV |
| Result | Test passed |

Mechanical properties

Mechanical data

| | |
|-----------------|-----|
| Open side panel | Yes |
|-----------------|-----|

Mechanical tests

Mechanical strength

| | |
|--------|-------------|
| Result | Test passed |
|--------|-------------|

Attachment on the carrier

| | |
|-------------------------|-------------|
| DIN rail/fixing support | NS 32/NS 35 |
| Test force setpoint | 1 N |
| Result | Test passed |

Test for conductor damage and slackening

| | |
|--------------------------------|-------------------------------|
| Rotation speed | 10 rpm |
| Revolutions | 135 |
| Conductor cross section/weight | 0.14 mm ² / 0.2 kg |
| | 1.5 mm ² / 0.4 kg |
| Result | Test passed |

UK 1,5 N BU - Feed-through terminal block



3005840

<https://www.phoenixcontact.com/us/products/3005840>

Environmental and real-life conditions

Needle-flame test

| | |
|------------------|-------------|
| Time of exposure | 30 s |
| Result | Test passed |

Ambient conditions

| | |
|--|---|
| Ambient temperature (storage/transport) | -25 °C ... 60 °C (for a short time, not exceeding 24 h, -60 °C to +70 °C) |
| Ambient temperature (assembly) | -5 °C ... 70 °C |
| Ambient temperature (actuation) | -5 °C ... 70 °C |
| Permissible humidity (storage/transport) | 30 % ... 70 % |

Standards and regulations

| | |
|----------------------------------|---------------|
| Connection in acc. with standard | IEC 60947-7-1 |
|----------------------------------|---------------|

Mounting

| | |
|---------------|-----------|
| Mounting type | NS 35/7,5 |
| | NS 35/15 |
| | NS 32 |

UK 1,5 N BU - Feed-through terminal block

3005840

<https://www.phoenixcontact.com/us/products/3005840>



Drawings

Circuit diagram



UK 1,5 N BU - Feed-through terminal block



3005840

<https://www.phoenixcontact.com/us/products/3005840>

Approvals

To download certificates, visit the product detail page: <https://www.phoenixcontact.com/us/products/3005840>

DNV

Approval ID: TAE00001CT



EAC

Approval ID: RU C-DE.A*30.B.01742



cULus Recognized

Approval ID: E60425

| | Nominal voltage U_N | Nominal current I_N | Cross section AWG | Cross section mm^2 |
|-------------|-----------------------|-----------------------|-------------------|-----------------------------|
| Use group B | 300 V | 15 A | 30 - 14 | - |
| Use group C | 300 V | 15 A | 30 - 14 | - |
| Use group F | 500 V | 15 A | 30 - 14 | - |
| Use group D | 600 V | 5 A | 30 - 14 | - |



KR

Approval ID: HMB17372-EL001



BV

Approval ID: 07774/E0 BV



ATEX

Approval ID: KEMA98ATEX1651U

| | Nominal voltage U_N | Nominal current I_N | Cross section AWG | Cross section mm^2 |
|------------------------------|-----------------------|-----------------------|-------------------|-----------------------------|
| Type examination certificate | 352 V | 17 A | - | 0.14 - 1.5 |



EAC Ex

Approval ID: RU C-DE.HA91.B.00066



IECEX

Approval ID: IECEX KEM 06.0034U

| | Nominal voltage U_N | Nominal current I_N | Cross section AWG | Cross section mm^2 |
|--|-----------------------|-----------------------|-------------------|-----------------------------|
|--|-----------------------|-----------------------|-------------------|-----------------------------|

UK 1,5 N BU - Feed-through terminal block



3005840

<https://www.phoenixcontact.com/us/products/3005840>

| | | | | |
|--|-------|------|---|------------|
| | 352 V | 17 A | - | 0.14 - 1.5 |
|--|-------|------|---|------------|



CCC

Approval ID: 2020322313000623

UK 1,5 N BU - Feed-through terminal block



3005840

<https://www.phoenixcontact.com/us/products/3005840>

Classifications

ECLASS

| | |
|-------------|----------|
| ECLASS-11.0 | 27141120 |
| ECLASS-13.0 | 27250101 |

ETIM

| | |
|----------|----------|
| ETIM 9.0 | EC000897 |
|----------|----------|

UNSPSC

| | |
|-------------|----------|
| UNSPSC 21.0 | 39121400 |
|-------------|----------|

UK 1,5 N BU - Feed-through terminal block



3005840

<https://www.phoenixcontact.com/us/products/3005840>

Environmental product compliance

| | |
|------------|---|
| China RoHS | Environmentally friendly use period: unlimited = EFUP-e |
| | No hazardous substances above threshold values |

UK 1,5 N BU - Feed-through terminal block

3005840

<https://www.phoenixcontact.com/us/products/3005840>

Accessories

 Note: Applying some accessories below might limit this product.

FBRN 8-4 N - Fixed bridge

3001608

<https://www.phoenixcontact.com/us/products/3001608>



Fixed bridge, pitch: 4 mm, number of positions: 8, color: silver

FBRN 7-4 N - Fixed bridge

3001598

<https://www.phoenixcontact.com/us/products/3001598>



Fixed bridge, number of positions: 7, color: silver

UK 1,5 N BU - Feed-through terminal block

3005840

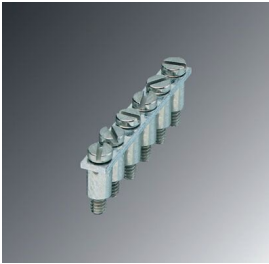
<https://www.phoenixcontact.com/us/products/3005840>



FBRN 6-4 N - Fixed bridge

3001585

<https://www.phoenixcontact.com/us/products/3001585>

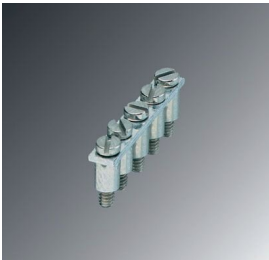


Fixed bridge, number of positions: 6, color: silver

FBRN 5-4 N - Fixed bridge

3001572

<https://www.phoenixcontact.com/us/products/3001572>



Fixed bridge, number of positions: 5, color: silver

UK 1,5 N BU - Feed-through terminal block

3005840

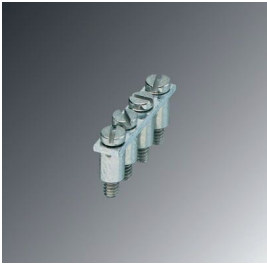
<https://www.phoenixcontact.com/us/products/3005840>



FBRN 4-4 N - Fixed bridge

3001569

<https://www.phoenixcontact.com/us/products/3001569>

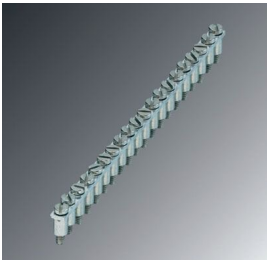


Fixed bridge, pitch: 4 mm, number of positions: 4, color: silver

FBRN 20-4 N - Fixed bridge

3001637

<https://www.phoenixcontact.com/us/products/3001637>



Fixed bridge, number of positions: 20, color: silver

UK 1,5 N BU - Feed-through terminal block

3005840

<https://www.phoenixcontact.com/us/products/3005840>




FBRN 10-4 N - Fixed bridge

3001624

<https://www.phoenixcontact.com/us/products/3001624>



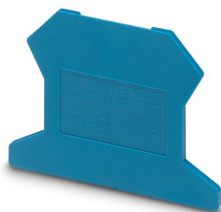
Fixed bridge, pitch: 4.2 mm, number of positions: 10, color: silver

 Max. current carrying capacity: 12 A

D-UK 2,5 BU - End cover

3001103

<https://www.phoenixcontact.com/us/products/3001103>



End cover, width: 1.5 mm, height: 42.5 mm, color: blue

UK 1,5 N BU - Feed-through terminal block

3005840

<https://www.phoenixcontact.com/us/products/3005840>

D-UK 2,5 - End cover

3001022

<https://www.phoenixcontact.com/us/products/3001022>

End cover, width: 1.5 mm, height: 42.5 mm, color: gray



ATP-UK - Partition plate

3003224

<https://www.phoenixcontact.com/us/products/3003224>

Partition plate, width: 1.5 mm, height: 56 mm, color: gray



UK 1,5 N BU - Feed-through terminal block

3005840

<https://www.phoenixcontact.com/us/products/3005840>



SZS 0,4X2,5 VDE - Screwdriver

1205037

<https://www.phoenixcontact.com/us/products/1205037>



Screwdriver, slot-headed, VDE insulated, size: 0.4 x 2.5 x 80 mm, 2-component grip, with non-slip grip

NS 32 PERF 2000MM-VPE 10 - DIN rail perforated

1201002

<https://www.phoenixcontact.com/us/products/1201002>



DIN rail perforated, Pack of 10 (20 m), acc. to EN 60715, material: Steel, galvanized, passivated with a thick layer, G profile, color: silver

UK 1,5 N BU - Feed-through terminal block

3005840

<https://www.phoenixcontact.com/us/products/3005840>



NS 32 UNPERF 2000MM-VPE 10 - DIN rail, unperforated

1201015

<https://www.phoenixcontact.com/us/products/1201015>



DIN rail, unperforated, Pack of 10 (20 m), acc. to EN 60715, material: Steel, galvanized, passivated with a thick layer, G profile, color: silver

NS 35/ 7,5 PERF 2000MM - DIN rail perforated

0801733

<https://www.phoenixcontact.com/us/products/0801733>



DIN rail perforated, Pack of 25 (50 m), acc. to EN 60715, material: Steel, galvanized, passivated with a thick layer, Standard profile, color: silver

UK 1,5 N BU - Feed-through terminal block

3005840

<https://www.phoenixcontact.com/us/products/3005840>



NS 35/ 7,5 UNPERF 2000MM - DIN rail, unperforated

0801681

<https://www.phoenixcontact.com/us/products/0801681>



DIN rail, unperforated, Pack of 25 (50 m), acc. to EN 60715, material: Steel, galvanized, passivated with a thick layer, Standard profile, color: silver

NS 35/ 7,5 WH PERF 2000MM - DIN rail perforated

1204119

<https://www.phoenixcontact.com/us/products/1204119>



DIN rail perforated, Pack of 25 (50 m), acc. to EN 60715, material: Steel, Galvanized, white passivated, Standard profile, color: silver

UK 1,5 N BU - Feed-through terminal block

3005840

<https://www.phoenixcontact.com/us/products/3005840>



NS 35/ 7,5 WH UNPERF 2000MM-VPE 10 - DIN rail, unperforated

1204122

<https://www.phoenixcontact.com/us/products/1204122>



DIN rail, unperforated, Pack of 10 (20 m), acc. to EN 60715, material: Steel, Galvanized, white passivated, Standard profile, color: silver

NS 35/ 7,5 AL UNPERF 2000MM - DIN rail, unperforated

0801704

<https://www.phoenixcontact.com/us/products/0801704>



DIN rail, unperforated, Pack of 25 (50 m), acc. to EN 60715, material: Aluminum, uncoated, Standard profile, color: silver

UK 1,5 N BU - Feed-through terminal block

3005840

<https://www.phoenixcontact.com/us/products/3005840>



NS 35/ 7,5 ZN PERF 2000MM - DIN rail perforated

1206421

<https://www.phoenixcontact.com/us/products/1206421>



DIN rail perforated, Pack of 25 (50 m), acc. to EN 60715, material: Steel, galvanized, Standard profile, color: silver

NS 35/ 7,5 ZN UNPERF 2000MM - DIN rail, unperforated

1206434

<https://www.phoenixcontact.com/us/products/1206434>



DIN rail, unperforated, Pack of 25 (50 m), acc. to EN 60715, material: Steel, galvanized, Standard profile, color: silver

UK 1,5 N BU - Feed-through terminal block

3005840

<https://www.phoenixcontact.com/us/products/3005840>



NS 35/ 7,5 CU UNPERF 2000MM-VPE 10 - DIN rail, unperforated

0801762

<https://www.phoenixcontact.com/us/products/0801762>



DIN rail, unperforated, Pack of 10 (20 m), acc. to EN 60715, material: Copper, uncoated, Standard profile, color: copper-colored

NS 35/ 7,5 CAP - End cap

1206560

<https://www.phoenixcontact.com/us/products/1206560>

DIN rail end piece, for DIN rail NS 35/7.5



UK 1,5 N BU - Feed-through terminal block

3005840

<https://www.phoenixcontact.com/us/products/3005840>

NS 35/15 PERF 2000MM - DIN rail perforated

1201730

<https://www.phoenixcontact.com/us/products/1201730>



DIN rail perforated, Pack of 25 (50 m), similar to EN 60715, material: Steel, galvanized, passivated with a thick layer, Standard profile, color: silver

NS 35/15 UNPERF 2000MM - DIN rail, unperforated

1201714

<https://www.phoenixcontact.com/us/products/1201714>



DIN rail, unperforated, Pack of 25 (50 m), similar to EN 60715, material: Steel, galvanized, passivated with a thick layer, Standard profile, color: silver

UK 1,5 N BU - Feed-through terminal block

3005840

<https://www.phoenixcontact.com/us/products/3005840>



NS 35/15 WH PERF 2000MM - DIN rail perforated

0806602

<https://www.phoenixcontact.com/us/products/0806602>



DIN rail perforated, Pack of 25 (50 m), similar to EN 60715, material: Steel, Galvanized, white passivated, Standard profile, color: white

NS 35/15 WH UNPERF 2000MM-VPE 10 - DIN rail, unperforated

1204135

<https://www.phoenixcontact.com/us/products/1204135>



DIN rail, unperforated, Pack of 10 (20 m), similar to EN 60715, material: Steel, Galvanized, white passivated, Standard profile, color: silver

UK 1,5 N BU - Feed-through terminal block

3005840

<https://www.phoenixcontact.com/us/products/3005840>



NS 35/15 AL UNPERF 2000MM - DIN rail, unperforated

1201756

<https://www.phoenixcontact.com/us/products/1201756>



DIN rail, unperforated, similar to EN 60715, material: Aluminum, uncoated, Standard profile, color: silver

NS 35/15 ZN PERF 2000MM - DIN rail perforated

1206599

<https://www.phoenixcontact.com/us/products/1206599>



DIN rail perforated, Pack of 25 (50 m), similar to EN 60715, material: Steel, galvanized, Standard profile, color: silver

UK 1,5 N BU - Feed-through terminal block

3005840

<https://www.phoenixcontact.com/us/products/3005840>



NS 35/15 ZN UNPERF 2000MM - DIN rail, unperforated

1206586

<https://www.phoenixcontact.com/us/products/1206586>



DIN rail, unperforated, Pack of 25 (50 m), similar to EN 60715, material: Steel, galvanized, Standard profile, color: silver

NS 35/15 CU UNPERF 2000MM-VPE 10 - DIN rail, unperforated

1201895

<https://www.phoenixcontact.com/us/products/1201895>



DIN rail, unperforated, Pack of 10 (20 m), similar to EN 60715, material: Copper, uncoated, Standard profile, color: copper-colored

UK 1,5 N BU - Feed-through terminal block

3005840

<https://www.phoenixcontact.com/us/products/3005840>



NS 35/15 CAP - End cap

1206573

<https://www.phoenixcontact.com/us/products/1206573>

DIN rail end piece, for DIN rail NS 35/15



NS 35/15-2,3 UNPERF 2000MM-VPE 10 - DIN rail, unperforated

1201798

<https://www.phoenixcontact.com/us/products/1201798>



DIN rail, unperforated, Pack of 10 (20 m), acc. to EN 60715, material: Steel, galvanized, passivated with a thick layer, Standard profile 2.3 mm, color: silver

UK 1,5 N BU - Feed-through terminal block

3005840

<https://www.phoenixcontact.com/us/products/3005840>

ZB 4 :UNBEDRUCKT - Zack marker strip

0805001

<https://www.phoenixcontact.com/us/products/0805001>



Zack marker strip, Strip, white, unlabeled, can be labeled with: PLOTMARK, CMS-P1-PLOTTER, mounting type: snapped, for terminal block width: 4.2 mm, lettering field size: 4.2 x 10.5 mm, Number of individual labels: 10

ZB 4 CUS - Zack marker strip

0824951

<https://www.phoenixcontact.com/us/products/0824951>



Zack marker strip, can be ordered: Strip, white, labeled according to customer specifications, mounting type: snap into tall marker groove, for terminal block width: 4.2 mm, lettering field size: 4.2 x 10.5 mm, Number of individual labels: 10

UK 1,5 N BU - Feed-through terminal block

3005840

<https://www.phoenixcontact.com/us/products/3005840>

ZB 4,LGS:FORTL.ZAHLEN - Zack marker strip

0805739

<https://www.phoenixcontact.com/us/products/0805739>

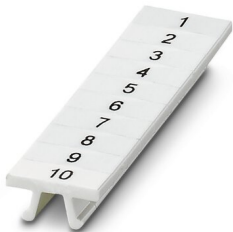


Zack marker strip, Strip, white, labeled, printed horizontally: consecutive numbers 1 ... 10, 11 ... 20, etc. up to 91 ... 100, mounting type: snapped, for terminal block width: 4.2 mm, lettering field size: 4.2 x 10.5 mm, Number of individual labels: 10

ZB 4,QR:FORTL.ZAHLEN - Zack marker strip

0805807

<https://www.phoenixcontact.com/us/products/0805807>



Zack marker strip, Strip, white, labeled, Printed vertically: consecutive numbers 1 ... 10, 11 ... 20, etc. up to 91 ... 100, mounting type: snapped, for terminal block width: 4.2 mm, lettering field size: 4.2 x 10.5 mm, Number of individual labels: 10

UK 1,5 N BU - Feed-through terminal block

3005840

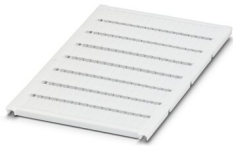
<https://www.phoenixcontact.com/us/products/3005840>



UC-TM 4 - Marker for terminal blocks

0818111

<https://www.phoenixcontact.com/us/products/0818111>



Marker for terminal blocks, Sheet, white, unlabeled, can be labeled with: BLUEMARK ID COLOR, BLUEMARK ID, BLUEMARK CLED, PLOTMARK, CMS-P1-PLOTTER, mounting type: snapped, for terminal block width: 4.2 mm, lettering field size: 3.6 x 10.5 mm, Number of individual labels: 120

UC-TM 4 CUS - Marker for terminal blocks

0824573

<https://www.phoenixcontact.com/us/products/0824573>



Marker for terminal blocks, can be ordered: by sheet, white, labeled according to customer specifications, mounting type: snap into tall marker groove, for terminal block width: 4.2 mm, lettering field size: 3.6 x 10.5 mm, Number of individual labels: 120

UK 1,5 N BU - Feed-through terminal block

3005840

<https://www.phoenixcontact.com/us/products/3005840>



UCT-TM 4 - Marker for terminal blocks

0828732

<https://www.phoenixcontact.com/us/products/0828732>



Marker for terminal blocks, Sheet, white, unlabeled, can be labeled with: TOPMARK NEO, TOPMARK LASER, BLUEMARK ID COLOR, BLUEMARK ID, BLUEMARK CLED, THERMOMARK PRIME, THERMOMARK CARD 2.0, THERMOMARK CARD, mounting type: snapped, for terminal block width: 4.2 mm, lettering field size: 3.6 x 10.5 mm, Number of individual labels: 84

UCT-TM 4 CUS - Marker for terminal blocks

0829588

<https://www.phoenixcontact.com/us/products/0829588>



Marker for terminal blocks, can be ordered: by sheet, white, labeled according to customer specifications, mounting type: snap into tall marker groove, for terminal block width: 4.2 mm, lettering field size: 3.6 x 10.5 mm, Number of individual labels: 84

UK 1,5 N BU - Feed-through terminal block



3005840

<https://www.phoenixcontact.com/us/products/3005840>

STP 4-2-ZB - Marker carriers

3038613

<https://www.phoenixcontact.com/us/products/3038613>



Marker carriers, snaps into ST 1,5... spring-cage terminal blocks, can be marked with UC-TM 4, UC-TMF 4, UCT-TM 4, UCT-TMF 4, ZB 4, or ZBF 4, gray, unlabeled, mounting type: snapped, lettering field size: 4 x 10.5 mm

CLIPFIX 35 - End bracket

3022218

<https://www.phoenixcontact.com/us/products/3022218>



Quick mounting end clamp for NS 35/7,5 DIN rail or NS 35/15 DIN rail, with marking option, width: 9.5 mm, color: gray

UK 1,5 N BU - Feed-through terminal block

3005840

<https://www.phoenixcontact.com/us/products/3005840>



CLIPFIX 35-5 - End bracket

3022276

<https://www.phoenixcontact.com/us/products/3022276>

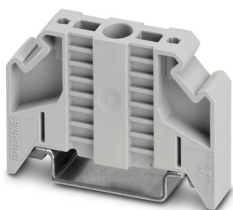


Quick mounting end clamp for NS 35/7,5 DIN rail or NS 35/15 DIN rail, with marking option, with parking option for FBS...5, FBS...6, KSS 5, KSS 6, width: 5.15 mm, color: gray

E/NS 35 N - End bracket

0800886

<https://www.phoenixcontact.com/us/products/0800886>



End clamp, width: 9.5 mm, color: gray

UK 1,5 N BU - Feed-through terminal block

3005840

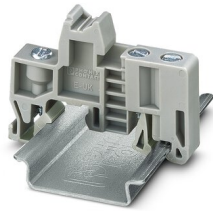
<https://www.phoenixcontact.com/us/products/3005840>

E/UK - End bracket

1201442

<https://www.phoenixcontact.com/us/products/1201442>

End bracket, Mounting on a DIN rail NS 32 or NS 35, material: PA, color: gray



E/UK 1 - End bracket

1201413

<https://www.phoenixcontact.com/us/products/1201413>

End clamps, for supporting the ends of double-level and three-level terminal blocks, width: 10 mm, color: gray



UK 1,5 N BU - Feed-through terminal block

3005840

<https://www.phoenixcontact.com/us/products/3005840>



PAI-4 - Test adapter

3030925

<https://www.phoenixcontact.com/us/products/3030925>



Test adapter, Touch proof against unintentional direct contact according to DIN EN 50274 when plugged in, for 4 mm test plug and terminal blocks with 8.2 mm pitch, number of positions: 1, color: gray

Phoenix Contact 2023 © - all rights reserved

<https://www.phoenixcontact.com>

Phoenix Contact USA

586 Fulling Mill Road

Middletown, PA 17057, United States

(+717) 944-1300

info@phoenixcon.com