

AXC F XT SPLC 1000 - PLC extension module



1159811

<https://www.phoenixcontact.com/us/products/1159811>

Please be informed that the data shown in this PDF document is generated from our online catalog. Please find the complete data in the user documentation. Our general terms of use for downloads are valid.



The AXC F XT SPLC 1000 is a left-alignable, safety-oriented controller for operating PROFIsafe devices. The SPLC 1000 is connected to the AXC F 2152 or AXC F 3152 modular controllers from the PLCnext Control series.

Your advantages

- Implementation of safety-related applications up to SIL 3/PL e
- PROFIsafe F-Host for up to 32 PROFIsafe F-Devices in PROFINET or Axioline
- PROFIsafe F-Device for communication with a higher-level PROFIsafe F-Host SPLC
- 2 x diverse SCPUs with Cortex M4-based architecture
- Full integration into the PLCnext Technology ecosystem

Commercial data

Item number	1159811
Packing unit	1 pc
Minimum order quantity	1 pc
Sales key	DR09
Product key	DRADAG
GTIN	4063151166663
Weight per piece (including packing)	317 g
Weight per piece (excluding packing)	142 g
Customs tariff number	85371091
Country of origin	DE

AXC F XT SPLC 1000 - PLC extension module

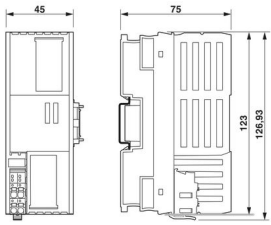


1159811

<https://www.phoenixcontact.com/us/products/1159811>

Technical data

Dimensions

Dimensional drawing	
Width	45 mm
Height	126.93 mm
Depth	75 mm
Note on dimensions	The depth applies when a TH 35-7.5 DIN rail is used (in accordance with EN 60715).

External dimensions

Width / Height / Depth	45 mm / 126.93 mm / 75 mm (The depth applies when a TH 35-7.5 DIN rail is used (in accordance with EN 60715).)
------------------------	--

Notes

General	If the SPLC-1000 is operated with AXC F 2152, the AXC BS L 2 bus base module must be used.
---------	--

Interfaces

Web server	No
------------	----

System properties

Processor	Arm® Cortex®-M4, 180 MHz (CPU1) Arm® Cortex®-M4, 100 MHz (CPU2)
-----------	--

Function

Diagnostics display	No
Controller redundancy	No
Safety function	yes

System requirements

Engineering tool	PLCnext Engineer
------------------	------------------

Product properties

Type	modular
Product type	I/O component
Product family	PLCnext Control Extension

Insulation characteristics

Protection class	III (IEC 61140, EN 61140, VDE 0140-1)
------------------	---------------------------------------

AXC F XT SPLC 1000 - PLC extension module



1159811

<https://www.phoenixcontact.com/us/products/1159811>

Display

Diagnostics display	No
---------------------	----

Electrical properties

Supply

Supply voltage	24 V DC
Supply voltage range	19.2 V DC ... 30 V DC (including all tolerances, including ripple)
Max. current consumption	100 mA
Typical current consumption	80 mA

Potentials: Supply of the logic voltage U_L

Supply voltage	24 V DC
Supply voltage range	19.2 V DC ... 30 V DC (including all tolerances, including ripple)
Current draw	max. 100 mA typ. 80 mA
Protective circuit	Reverse polarity protection; Polarity protection diode Transient protection; Suppressor diode

Connection data

Connection technology

Connection name	Axioline F connector
-----------------	----------------------

Conductor connection

Connection method	Push-in connection
Conductor cross section rigid	0.2 mm ² ... 1.5 mm ²
Conductor cross section flexible	0.2 mm ² ... 1.5 mm ²
Conductor cross section AWG	24 ... 16
Stripping length	8 mm

Axioline F connector

Connection method	Push-in connection
Conductor cross section, rigid	0.2 mm ² ... 1.5 mm ²
Conductor cross section, flexible	0.2 mm ² ... 1.5 mm ²
Conductor cross section AWG	24 ... 16
Stripping length	8 mm

Environmental and real-life conditions

Ambient conditions

Degree of protection	IP20
Ambient temperature (operation)	-25 °C ... 60 °C up to 2000 m above mean sea level -25 °C ... 55 °C up to 3000 m above mean sea level -25 °C ... 50 °C up to 4000 m above mean sea level
Ambient temperature (storage/transport)	-40 °C ... 85 °C
Permissible humidity (operation)	5 % ... 95 % (according to DIN EN 61131-2)

AXC F XT SPLC 1000 - PLC extension module



1159811

<https://www.phoenixcontact.com/us/products/1159811>

Permissible humidity (storage/transport)	5 % ... 95 % (according to DIN EN 61131-2)
Shock (operation)	30g (in accordance with EN 60068-2-27/IEC 60068-2-27)
Shock (storage/transport)	30g (in accordance with EN 60068-2-27/IEC 60068-2-27)
Vibration (operation)	5g (in accordance with EN 60068-2-6/IEC 60068-2-6)
Vibration (storage/transport)	5g (in accordance with EN 60068-2-6/IEC 60068-2-6)
Air pressure (operation)	70 kPa ... 106 kPa (up to 3000 m above sea level)
Air pressure (storage/transport)	58 kPa ... 106 kPa (up to 4500 m above mean sea level)
Resistance to gases that may endanger the functions, in acc. with DIN 40046-36, DIN 40046-37	Use of the device in these ambient conditions is prohibited.

Approvals

ATEX

Identification	Ⓔ II 3 G Ex ec IIC T4 Gc
Certificate	UL 21 ATEX 2651X

IECEX

Identification	Ex ec IIC T4 Gc
Certificate	IECEX ULD 21.0029X

UL Ex, USA / Canada

Identification	Class I, Zone 2, AEx ec IIC T4, Ex ec IIC T4 Gc X Class I, Div. 2 Groups A, B, C, D T4
Certificate	E366272

UL, USA/Canada

Identification	cULus
Certificate	E238705

Industrial Cyber Security

Identification	Industrial IT Security, IACS Component
Certificate	IITS2 029429 0027
Note	Configuration: Security Profile active

Mounting

Mounting type	DIN rail mounting
Connection method	Push-in connection

AXC F XT SPLC 1000 - PLC extension module

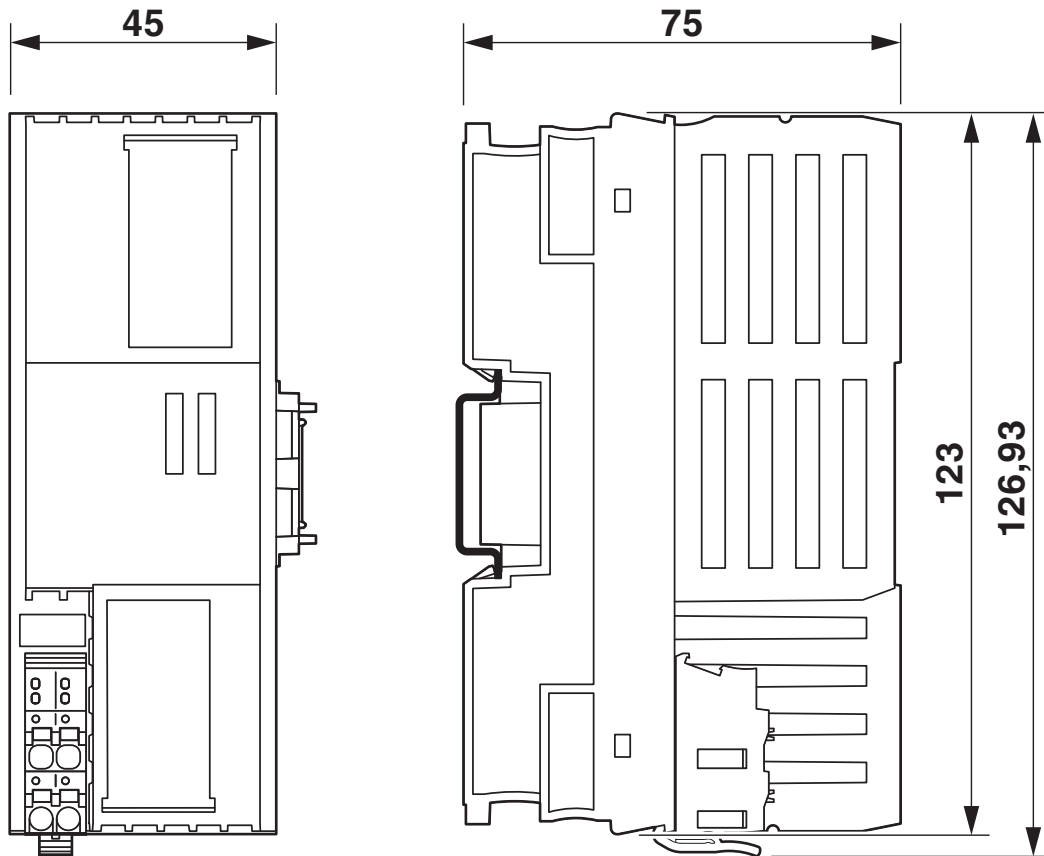


1159811

<https://www.phoenixcontact.com/us/products/1159811>

Drawings

Dimensional drawing



AXC F XT SPLC 1000 - PLC extension module



1159811

<https://www.phoenixcontact.com/us/products/1159811>

Approvals

🔗 To download certificates, visit the product detail page: <https://www.phoenixcontact.com/us/products/1159811>



Functional Safety

Approval ID: 01/205/5864.00/21



Functional Safety

Approval ID: 01/205/5864.00/21

PROFIsafe

Approval ID: Z20301

PROFIsafe

Approval ID: Z20301



DNV GL

Approval ID: TAA00000DF



DNV GL

Approval ID: TAA00000DF



Functional Safety

Approval ID: 968/FSP 2367.00/21



Functional Safety

Approval ID: 968/FSP 2367.00/21



Functional Safety

Approval ID: 01/205U/5864.00/23

PROFIsafe

Approval ID: Z20299

PROFIsafe

Approval ID: Z20299

AXC F XT SPLC 1000 - PLC extension module



1159811

<https://www.phoenixcontact.com/us/products/1159811>



TÜV SÜD Type tested

Approval ID: IITS2 029429 0027



cULus Listed

Approval ID: E238705



cULus Listed

Approval ID: E238705

AXC F XT SPLC 1000 - PLC extension module



1159811

<https://www.phoenixcontact.com/us/products/1159811>

Classifications

ECLASS

ECLASS-11.0	27242207
ECLASS-12.0	27242207
ECLASS-13.0	27242207

ETIM

ETIM 9.0	EC000236
----------	----------

UNSPSC

UNSPSC 21.0	32151700
-------------	----------

AXC F XT SPLC 1000 - PLC extension module



1159811

<https://www.phoenixcontact.com/us/products/1159811>

Environmental product compliance

REACH SVHC

Lead 7439-92-1

AXC F XT SPLC 1000 - PLC extension module



1159811

<https://www.phoenixcontact.com/us/products/1159811>

Mandatory accessories

AXC F 2152 - Controller

2404267

<https://www.phoenixcontact.com/us/products/2404267>



PLCnext Control for the direct control of Axioline F I/Os. With two Ethernet interfaces. Complete with connector and bus base module.

AXC F 3152 - Controller

1069208

<https://www.phoenixcontact.com/us/products/1069208>



PLCnext Control for the direct control of Axioline F I/Os. With three independent Ethernet interfaces. Complete with connector and bus base module.

AXC F XT SPLC 1000 - PLC extension module

1159811

<https://www.phoenixcontact.com/us/products/1159811>



AXC BS L 2 - Bus connector

1064312

<https://www.phoenixcontact.com/us/products/1064312>



Bus base module for the left alignment of AXC F XT... type extension modules to AXC F 2152 type controllers (item no. 2404267).

Accessories

AXL F BK PN TPS - Bus coupler

2403869

<https://www.phoenixcontact.com/us/products/2403869>



Axiline F, Bus coupler, PROFINET, RJ45 jack, transmission speed in the local bus: 100 Mbps, degree of protection: IP20, including bus base module and Axiline F connector

AXC F XT SPLC 1000 - PLC extension module

1159811

<https://www.phoenixcontact.com/us/products/1159811>



AXL SE PSDI8/3 - Safety module

1079241

<https://www.phoenixcontact.com/us/products/1079241>



Axiline Smart Elements, Digital input module, Functional safety, PROFIsafe, only for connection to Phoenix Contact or Siemens controller, Safe digital inputs: 4 (2-channel assignment), 8 (1-channel assignment), 24 V DC, connection technology: 3-conductor, degree of protection: IP20

AXL SE PSDO4/2 2A - Safety module

1079231

<https://www.phoenixcontact.com/us/products/1079231>



Axiline Smart Elements, Digital output module, Functional safety, PROFIsafe, only for connection to Phoenix Contact or Siemens controller, Safe digital outputs: 2 (2-channel assignment), 4 (1-channel assignment), 24 V DC, 2 A, connection technology: 2-conductor, degree of protection: IP20

AXC F XT SPLC 1000 - PLC extension module

1159811

<https://www.phoenixcontact.com/us/products/1159811>



AXL SE SC-A - Cover

1088134

<https://www.phoenixcontact.com/us/products/1088134>



Axioline Smart Elements, Slot cover, Diagnostic function, degree of protection: IP20

AXL F BP SE4 - Module carrier

1088135

<https://www.phoenixcontact.com/us/products/1088135>



Axioline F, Backplane, 4 slots for Axioline Smart Elements, transmission speed in the local bus: 100 Mbps, degree of protection: IP20

AXC F XT SPLC 1000 - PLC extension module

1159811

<https://www.phoenixcontact.com/us/products/1159811>



AXL F PSDO8/3 1F - Safety module

2701560

<https://www.phoenixcontact.com/us/products/2701560>



Axioline F, Digital output module, Functional safety, PROFIsafe, only for connection to Phoenix Contact or Siemens controller, Digital outputs: 4 (for 2-channel assignment), 8 (for 1-channel assignment), 2 A, connection technology: 2-, 3-conductor, degree of protection: IP20

AXL F DI16/1 HS 1H - Digital module

2701722

<https://www.phoenixcontact.com/us/products/2701722>



Axioline F, Digital input module, Digital inputs: 16, 24 V DC, connection technology: 1-conductor, Input filter time <math>< 5 \mu\text{s}</math>, transmission speed in the local bus: 100 Mbps, degree of protection: IP20, including bus base module and Axioline F connectors

AXC F XT SPLC 1000 - PLC extension module



1159811

<https://www.phoenixcontact.com/us/products/1159811>

QUINT4-PS/1AC/24DC/20/+ - Power supply unit

2904617

<https://www.phoenixcontact.com/us/products/2904617>



Primary-switched QUINT POWER supply for DIN rail mounting, with selectable output characteristic curve and SFB Technology (selective fuse breaking), protective coating and integrated decoupling MOSFET, input: 1-phase, output: 24 V DC / 20 A

QUINT4-PS/1AC/24DC/10 - Power supply unit

2904601

<https://www.phoenixcontact.com/us/products/2904601>



Primary-switched QUINT POWER power supply with free choice of output characteristic curve, SFB (selective fuse breaking) technology, and NFC interface, input: 1-phase, output: 24 V DC/10 A

AXC F XT SPLC 1000 - PLC extension module

1159811

<https://www.phoenixcontact.com/us/products/1159811>



QUINT4-PS/1AC/24DC/5 - Power supply unit

2904600

<https://www.phoenixcontact.com/us/products/2904600>



Primary-switched QUINT POWER power supply with free choice of output characteristic curve, SFB (selective fuse breaking) technology, and NFC interface, input: 1-phase, output: 24 V DC/5 A

SD FLASH 8GB PLCNEXT MEMORY - Program / configuration memory

1061701

<https://www.phoenixcontact.com/us/products/1061701>



Program and configuration memory for storing the application programs and other files in the file system of the PLC, plug-in, 8 GB.

AXC F XT SPLC 1000 - PLC extension module



1159811

<https://www.phoenixcontact.com/us/products/1159811>

SD FLASH 2GB PLCNEXT MEMORY - Program / configuration memory

1043501

<https://www.phoenixcontact.com/us/products/1043501>

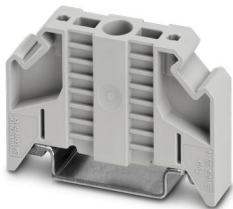


Program and configuration memory for storing the application programs and other files in the file system of the PLC, plug-in, 2 GB.

E/NS 35 N - End bracket

0800886

<https://www.phoenixcontact.com/us/products/0800886>



End clamp, width: 9.5 mm, color: gray

AXC F XT SPLC 1000 - PLC extension module



1159811

<https://www.phoenixcontact.com/us/products/1159811>

E/AL-NS 35 - End bracket

1201662

<https://www.phoenixcontact.com/us/products/1201662>



End clamp, for end support of UKH 50 to UKH 240, is pushed onto DIN rail NS 35 and fixed with 2 screws, width: 10 mm, color: aluminum

CLIPFIX 35 - End bracket

3022218

<https://www.phoenixcontact.com/us/products/3022218>



Quick mounting end clamp for NS 35/7,5 DIN rail or NS 35/15 DIN rail, with marking option, width: 9.5 mm, color: gray

AXC F XT SPLC 1000 - PLC extension module



1159811

<https://www.phoenixcontact.com/us/products/1159811>

CLIPFIX 35-5 - End bracket

3022276

<https://www.phoenixcontact.com/us/products/3022276>



Quick mounting end clamp for NS 35/7,5 DIN rail or NS 35/15 DIN rail, with marking option, with parking option for FBS...5, FBS...6, KSS 5, KSS 6, width: 5.15 mm, color: gray

E/UK - End bracket

1201442

<https://www.phoenixcontact.com/us/products/1201442>



End bracket, Mounting on a DIN rail NS 32 or NS 35, material: PA, color: gray

AXC F XT SPLC 1000 - PLC extension module



1159811

<https://www.phoenixcontact.com/us/products/1159811>

PLCNEXT ENGINEER - Programming software

1046008

<https://www.phoenixcontact.com/us/products/1046008>



Engineering software platform for Phoenix Contact automation controllers. PLCnext Engineer is IEC 61131-3-compliant and is available free of charge under Downloads. Its functionality can be extended using paid add-ins. To do this, open the license configurator via the "Configure" button.

AXL F PSDOR4/2 1F - Safety module

2702858

<https://www.phoenixcontact.com/us/products/2702858>



Axioline F, Relay module, Functional safety, PROFIsafe, only for connection to Phoenix Contact or Siemens controller, Signal inputs: 2, Outputs OUT24V_0 and OUT24V_1: 2, Safe relay outputs: 4 (floating), N/O contact, degree of protection: IP20

AXC F XT SPLC 1000 - PLC extension module

1159811

<https://www.phoenixcontact.com/us/products/1159811>



AXL F PSDI8/4 1F - Safety module

2701559

<https://www.phoenixcontact.com/us/products/2701559>



Axioline F, Digital input module, Functional safety, PROFIsafe, only for connection to Phoenix Contact or Siemens controller, Digital inputs: 4 (for 2-channel assignment), 8 (for 1-channel assignment), 24 V DC, connection technology: 2-, 3-, 4-conductor, degree of protection: IP20

AXL F PSAI8 I 1F - Safety module

1061424

<https://www.phoenixcontact.com/us/products/1061424>



Axioline F, Analog input module, Functional safety, PROFIsafe, Only for connection to Phoenix Contact or Siemens controllers in PROFINET systems, Safe analog inputs: 8 (1-channel assignment), 4 (2-channel assignment), 4 mA .. . 20 mA, connection technology: 2-conductor (shielded, twisted pair), degree of protection: IP20

Phoenix Contact 2023 © - all rights reserved
<https://www.phoenixcontact.com>

Phoenix Contact USA
586 Fulling Mill Road
Middletown, PA 17057, United States
(+717) 944-1300
info@phoenixcon.com