

OCS HP 121006 GY7035 - Electronic housing



1471775

<https://www.phoenixcontact.com/us/products/1471775>

Please be informed that the data shown in this PDF document is generated from our online catalog. Please find the complete data in the user documentation. Our general terms of use for downloads are valid.

Outdoor housing, color: light gray, dimensions: 12" x 10" x 6", incl. corner inlays, cover plugs, screws, cover: light gray, plastic latch, material: PC UV-stabilized



Your advantages

- Internationally certified housing system
- Special plastic ensures safe continuous operation
- Provides protection against the ingress of jet water
- Withstands even heavy mechanical strain

Commercial data

Item number	1471775
Packing unit	1 pc
Minimum order quantity	1 pc
Sales key	AC04
Product key	ACFDBA
GTIN	4063151880521
Weight per piece (including packing)	2.242 kg
Weight per piece (excluding packing)	2.242 kg
Customs tariff number	84879090
Country of origin	EE

Technical data

Notes

General	Only use the screws provided to screw the components onto the corner inlays, the mounting pillars, and the housing.
General	To maintain the degree of protection, you must install suitable components with at least the same IP degree of protection in all openings.
General	Further information and detailed dimensions are available in the download area.
General	Mounting feet, mounting plates, mounting panels, and the mount for mast mounting are available as accessories, but are not supplied as standard.

Product properties

Product type	Complete housing
Type	Opaque complete housing including mounting material
Housing type	Outdoor housing
Ventilation openings present	no
Housing series	OCS
Battery compartment	no

Dimensions

Width	308 mm
Height	326 mm
Depth	185 mm
Hole diameter	10 mm (Can be secured mechanically with the latch)

Material specifications

Flammability rating according to UL 94	V2
Seal material	PUR
Insulating material	PC
Surface characteristics	untreated
Impact strength	IK10 (at -35°C ... +40°C)
Housing material	PC UV-stabilized

Environmental and real-life conditions

Glow-wire test

Specification	IEC 60695-2-11:2014-02
Temperature	850 °C
Time of exposure	30 s

Degree of protection (IP code)

Specification	IEC 60529:2001-02
---------------	-------------------

Ambient conditions

OCS HP 121006 GY7035 - Electronic housing



1471775

<https://www.phoenixcontact.com/us/products/1471775>

Max. IP code to attain	IP69
Max. NEMA code to attain	6P
Impact strength	IK10 (at -35°C ... +40°C)
Ambient temperature (operation)	-40 °C ... 80 °C

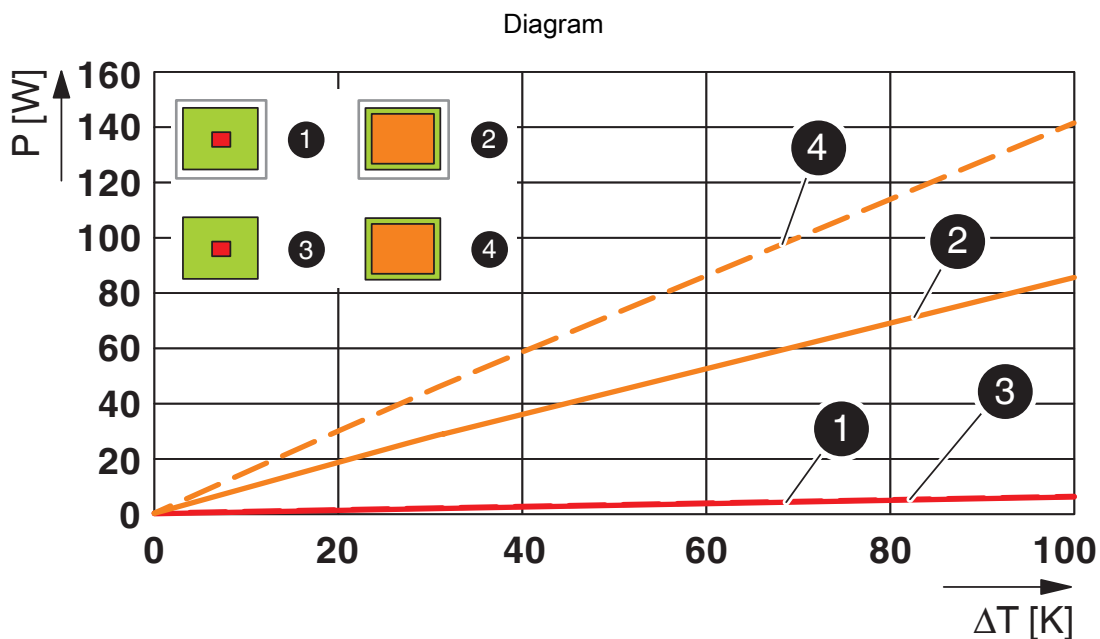
Mounting

Mounting type	Mast mounting or wall mounting
Mounting position	any

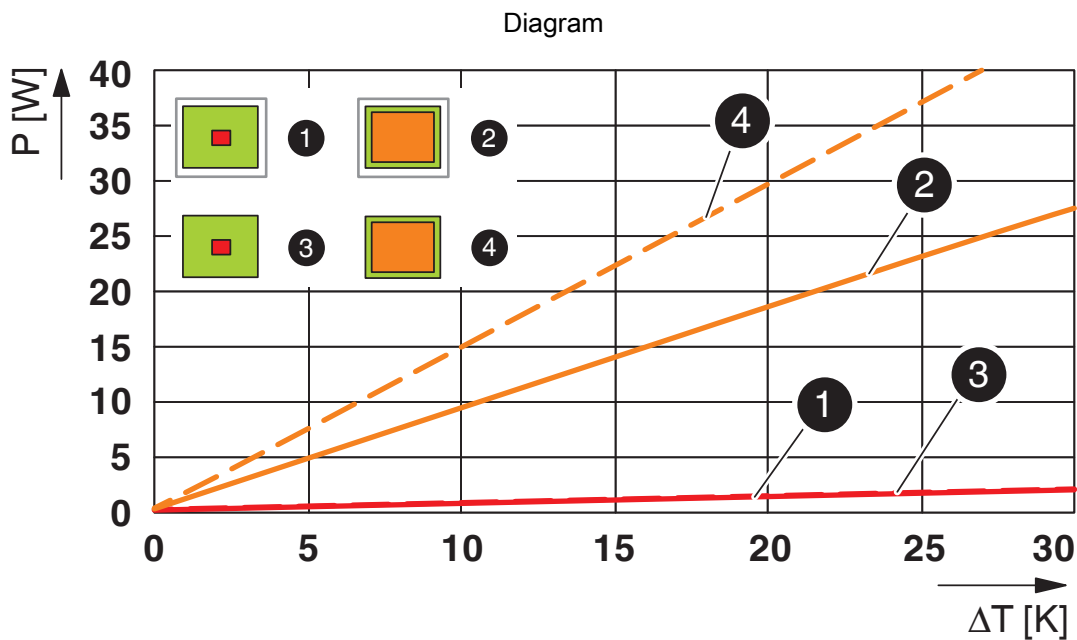
Packaging specifications

Type of packaging	Box packaging
-------------------	---------------

Drawings



Power dissipation diagram for 0 K ... 100 K



Power dissipation diagram for 0 K ... 30 K

OCS HP 121006 GY7035 - Electronic housing



1471775

<https://www.phoenixcontact.com/us/products/1471775>

Approvals

To download certificates, visit the product detail page: <https://www.phoenixcontact.com/us/products/1471775>



cULus Listed

Approval ID: E255026-20221017

OCS HP 121006 GY7035 - Electronic housing



1471775

<https://www.phoenixcontact.com/us/products/1471775>

Classifications

ECLASS

ECLASS-11.0	27182702
ECLASS-13.0	27190103

ETIM

ETIM 9.0	EC001031
----------	----------

OCS HP 121006 GY7035 - Electronic housing



1471775

<https://www.phoenixcontact.com/us/products/1471775>

Environmental product compliance

REACH SVHC

Lead 7439-92-1

OCS HP 121006 GY7035 - Electronic housing



1471775

<https://www.phoenixcontact.com/us/products/1471775>

Mandatory accessories

OCS CORNER SET - Corner attachment

1471789

<https://www.phoenixcontact.com/us/products/1471789>

Corner mount, set of 4 pieces incl. screws for all housing sizes, material: PC-ABS, color: light gray



OCS FOOT SET - Wall bracket

1471777

<https://www.phoenixcontact.com/us/products/1471777>

Mounting foot, set of 4 pieces incl. screws for all housing sizes, material: polycarbonate, color: light gray



OCS HP 121006 GY7035 - Electronic housing



1471775

<https://www.phoenixcontact.com/us/products/1471775>

OCS MOUNT 1210 SET - Wall bracket

1471782

<https://www.phoenixcontact.com/us/products/1471782>

Mounting plate, set of 2 pieces incl. screws for housing size of 12" x 10", material: polycarbonate, color: light gray



OCS PANEL 1210 PC - Mounting panel

1471786

<https://www.phoenixcontact.com/us/products/1471786>

Mounting panel for housing size of 12" x 10", material: polycarbonate, color: white



OCS HP 121006 GY7035 - Electronic housing

1471775

<https://www.phoenixcontact.com/us/products/1471775>



OCS POLEFIX 1210 - Mounting material

1476926

<https://www.phoenixcontact.com/us/products/1476926>

Mount for mast \varnothing of 60 mm ... 140 mm, complete set for a housing of 12" x 10",
material: steel



Accessories

OCS CORNER SCREW SET - Screw set

1521845

<https://www.phoenixcontact.com/us/products/1521845>

Mounting screw, set of 4 pcs., for securing mounting panel or PCB to corner
inlay, flat-head PH1 slot, UNF 10-32 fine thread, length: 10 mm, material:
stainless steel



OCS HP 121006 GY7035 - Electronic housing



1471775

<https://www.phoenixcontact.com/us/products/1471775>

SF-PHSL 2-100 S-VDE - Screwdriver

1212698

<https://www.phoenixcontact.com/us/products/1212698>



Screwdriver, positive/negative PH slot, VDE insulated, size: PH 2 x 100, 2-component grip, with non-slip grip

SF-PH 2-100 - Screwdriver

1212560

<https://www.phoenixcontact.com/us/products/1212560>



Screwdriver, PH crosshead (lasered), uninsulated, size: PH 2 x 100, 2-component grip, with non-slip grip

OCS HP 121006 GY7035 - Electronic housing



1471775

<https://www.phoenixcontact.com/us/products/1471775>

A-INB-M12-69KN-P-LG - Pressure compensation element

1415222

<https://www.phoenixcontact.com/us/products/1415222>



Pressure compensation element, material for screw connection: PA, connecting thread: M12 x 1.5, color: light grey, with O-ring

A-INL-M12-P-LG - Counter nut

1417659

<https://www.phoenixcontact.com/us/products/1417659>



Counter nut, for threads M12 x 1.5, color: light grey

OCS HP 121006 GY7035 - Electronic housing



1471775

<https://www.phoenixcontact.com/us/products/1471775>

WT-STEEL SH 4,6X150 - Cable tie

3240820

<https://www.phoenixcontact.com/us/products/3240820>



Cable binders, made from rust-free stainless steel (AISI 316), suitable for the harshest of ambient conditions (for example, salt water), with ball lock, for quick and secure bundling and fastening

G-INS-M25-L68N-PNES-LG - Cable gland

1424472

<https://www.phoenixcontact.com/us/products/1424472>



Cable gland, material for screw connection: PA, external cable diameter 13 mm .
.. 18 mm, shielding: no, connecting thread: M25 x 1.5, color: lightgrey RAL 7035

OCS HP 121006 GY7035 - Electronic housing



1471775

<https://www.phoenixcontact.com/us/products/1471775>

G-INS-M25-M68L-PEPDS-LG - Cable gland

1424516

<https://www.phoenixcontact.com/us/products/1424516>



Cable gland, material for screw connection: PA, external cable diameter 9 mm ...
17 mm, shielding: no, connecting thread: M25 x 1.5, color: lightgrey RAL 7035

A-INL-M25-P-LG - Counter nut

1417661

<https://www.phoenixcontact.com/us/products/1417661>



Counter nut, for threads M25 x 1.5, color: light grey

OCS HP 121006 GY7035 - Electronic housing

1471775

<https://www.phoenixcontact.com/us/products/1471775>

A-INSP-M25-68N-P-LG - Screw plug

1424520

<https://www.phoenixcontact.com/us/products/1424520>

Screw plug, material for screw connection: PA, connecting thread: M25 x 1.5, color: lightgrey RAL 7035, with O-ring



G-INS-M40-M68N-PNES-LG - Cable gland

1417656

<https://www.phoenixcontact.com/us/products/1417656>

Cable gland, material for screw connection: PA, external cable diameter 19 mm .. 28 mm, shielding: no, connecting thread: M40 x 1.5, color: lightgrey RAL 7035



OCS HP 121006 GY7035 - Electronic housing



1471775

<https://www.phoenixcontact.com/us/products/1471775>

G-INB-M40-M68N-NEPDS-S - Cable gland

1415185

<https://www.phoenixcontact.com/us/products/1415185>



Cable gland, material for screw connection: Brass, nickel-plated, external cable diameter 16 mm ... 28 mm, shielding: no, connecting thread: M40 x 1.5, color: silver, with bend protection sleeve, with O-ring

A-INL-M40-P-LG - Counter nut

1417664

<https://www.phoenixcontact.com/us/products/1417664>

Counter nut, for threads M40 x 1.5, color: light grey



OCS HP 121006 GY7035 - Electronic housing



1471775

<https://www.phoenixcontact.com/us/products/1471775>

A-INSP-M40-68N-P-LG - Screw plug

1424522

<https://www.phoenixcontact.com/us/products/1424522>

Screw plug, material for screw connection: PA, connecting thread: M40 x 1.5, color: lightgrey RAL 7035



VS-08-A-RJ45/LP-1-IP67 - Panel mounting frames

1689446

<https://www.phoenixcontact.com/us/products/1689446>

RJ45 panel mounting frame, IP67, for PCB connection, for square panel cutout, with grommet, without mounting screws, color: gray



OCS HP 121006 GY7035 - Electronic housing



1471775

<https://www.phoenixcontact.com/us/products/1471775>

VS-08-SD-F-BK - Protective cover

1658066

<https://www.phoenixcontact.com/us/products/1658066>

Protective cover, IP67, flat design, to cover the contact insert in the panel mounting frame, color: black

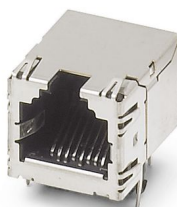


VS-08-BU-RJ45-6/LH-1 - RJ45 PCB connectors

1653087

<https://www.phoenixcontact.com/us/products/1653087>

RJ45 PCB connectors, design: RJ45, degree of protection: IP20, number of positions: 8, 1 Gbps, CAT5 (IEC 11801:2002), material: Metal, connection method: THT wave, cable outlet: straight



OCS HP 121006 GY7035 - Electronic housing



1471775

<https://www.phoenixcontact.com/us/products/1471775>

CUC-V06-C1PGY-S/R4CE8:1 - RJ45 connector

1414383

<https://www.phoenixcontact.com/us/products/1414383>

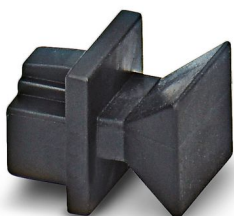


RJ45 connector, design: RJ45, degree of protection: IP67, number of positions: 8, 1 Gbps, CAT6, material: Plastic, connection method: Crimp connection, connection cross section: AWG 27- 24, cable outlet: straight, color: gray, Ethernet/PROFINET

FL RJ45 PROTECT CAP - Dust protection

2832991

<https://www.phoenixcontact.com/us/products/2832991>



Dust protection caps for RJ45 socket

OCS HP 121006 GY7035 - Electronic housing



1471775

<https://www.phoenixcontact.com/us/products/1471775>

PRC 5-FT25-MC6-150 - Device connector, rear mounting

1409213

<https://www.phoenixcontact.com/us/products/1409213>



Device connector, rear mounting, Range of articles: PRC 35, housing material: PPE, color: black, number of positions: 5, max. conductor cross section: 6 mm², rated voltage: 690 V AC, rated current: 35 A, Connection method: Crimp connection, Contact connection type: Pin, cable length: 150. This item is also available with other cable lengths. For your specific requirements, please contact your local PHOENIX CONTACT subsidiary.

PRC COVER M - Protective cap

1409237

<https://www.phoenixcontact.com/us/products/1409237>



Protective cap, Range of articles: PRC 35, housing material: PPE, color: black, rated voltage: 1000. Suitable for connectors (MS)

OCS HP 121006 GY7035 - Electronic housing



1471775

<https://www.phoenixcontact.com/us/products/1471775>

PRC 5-FC-FS6 8-21 HR - Coupler connector

1017632

<https://www.phoenixcontact.com/us/products/1017632>



Coupler connector, Range of articles: PRC 35, design: Release with tool or by hand (see accessories), housing material: PPE, color: black, number of positions: 5, min. conductor cross section: 1.5 mm², max. conductor cross section: 6 mm², rated voltage: 690 V AC, rated current: 35 A, Connection method: Screw connection, Contact connection type: Socket, min. cable diameter: 8 mm, max. cable diameter: 21 mm. Variant for manual release

FT NUT M25 GY - Nut

1049832

<https://www.phoenixcontact.com/us/products/1049832>



Nut, Range of articles: PRC 35, color: gray. NOTE: For indoor use only

OCS HP 121006 GY7035 - Electronic housing

1471775

<https://www.phoenixcontact.com/us/products/1471775>

PRC COVER F - Protective cap

1409236

<https://www.phoenixcontact.com/us/products/1409236>



Protective cap, Range of articles: PRC 35, housing material: PPE, color: black, rated voltage: 1000. Suitable for couplings (FS)

SPT 5/ 5-H-7,5-ZB - PCB terminal block

1719228

<https://www.phoenixcontact.com/us/products/1719228>



PCB terminal block, nominal current: 41 A, rated voltage (III/2): 1000 V, nominal cross section: 6 mm², number of potentials: 5, number of rows: 1, number of positions per row: 5, product range: SPT 5/..-H, pitch: 7.5 mm, connection method: Push-in spring connection, mounting: Wave soldering, conductor/PCB connection direction: 0 °, color: green, Pin layout: Zigzag pinning W, Solder pin [P]: 4.6 mm, number of solder pins per potential: 2, type of packaging: packed in cardboard

OCS HP 121006 GY7035 - Electronic housing



1471775

<https://www.phoenixcontact.com/us/products/1471775>

PV-FT-C4M-C-6-130-RD-00 - Device connector front mounting

1158451

<https://www.phoenixcontact.com/us/products/1158451>



Device connector front mounting, Range of articles: Sunclix, housing material: PPE, color: black, number of positions: 1, rated voltage: 1500 V DC, Connection method: Crimp, Contact connection type: Pin

PV-FT-C4F-C-6-130-BU-00 - Device connector front mounting

1158448

<https://www.phoenixcontact.com/us/products/1158448>



Device connector front mounting, Range of articles: Sunclix, housing material: PPE, color: black, number of positions: 1, rated voltage: 1500 V DC, Connection method: Crimp, Contact connection type: Socket

OCS HP 121006 GY7035 - Electronic housing



1471775

<https://www.phoenixcontact.com/us/products/1471775>

SPT 5/ 1-H-7,5 - PCB terminal block

1719189

<https://www.phoenixcontact.com/us/products/1719189>



PCB terminal block, nominal current: 41 A, rated voltage (III/2): 630 V, nominal cross section: 6 mm², number of potentials: 1, number of rows: 1, number of positions per row: 1, product range: SPT 5/..-H, pitch: 7.5 mm, connection method: Push-in spring connection, mounting: Wave soldering, conductor/PCB connection direction: 0 °, color: green, Pin layout: Linear pinning, Solder pin [P]: 4.6 mm, number of solder pins per potential: 2, type of packaging: packed in cardboard

PV-C PROTECTION CAP - Protective cap

1785430

<https://www.phoenixcontact.com/us/products/1785430>

Protective cap, Range of articles: Sunclix, color: black. self-sealing, without interlock, set consisting of: 1 protective cap for connector side and 1 protective cap for coupling side



OCS HP 121006 GY7035 - Electronic housing

1471775

<https://www.phoenixcontact.com/us/products/1471775>



PV-FT-C COLLAR NUT BK - Screw connection

1083475

<https://www.phoenixcontact.com/us/products/1083475>



Screw connection, Range of articles: Sunclix

TOOL-KIT SOLAR - Tool set

1212071

<https://www.phoenixcontact.com/us/products/1212071>



Tool case, equipped with: crimping pliers, pressing dies for MC3, MC4 and SOLARLOK connectors, stripping tool for commercially available solar cables, stripping tool for SUNCLIX, VDE cable cutter, VDE screwdriver: PH1, PH2, 0.6x3.5 and 0.8x4.0 slots.

Phoenix Contact 2023 © - all rights reserved
<https://www.phoenixcontact.com>

Phoenix Contact USA
586 Fulling Mill Road
Middletown, PA 17057, United States
(+717) 944-1300
info@phoenixcon.com