

# OCS HP 080604 GY7035 - Electronic housing



1471770

<https://www.phoenixcontact.com/us/products/1471770>

Please be informed that the data shown in this PDF document is generated from our online catalog. Please find the complete data in the user documentation. Our general terms of use for downloads are valid.



Outdoor housing, color: light gray, dimensions: 8" x 6" x 4", incl. corner inlays, cover plugs, screws, cover: light gray, plastic latch, material: PC UV-stabilized

## Your advantages

- Internationally certified housing system
- Special plastic ensures safe continuous operation
- Provides protection against the ingress of jet water
- Withstands even heavy mechanical strain

## Commercial data

Item number	1471770
Packing unit	1 pc
Minimum order quantity	1 pc
Sales key	AC04
Product key	ACFDBA
GTIN	4063151880842
Weight per piece (including packing)	1.167 kg
Weight per piece (excluding packing)	1.114 kg
Customs tariff number	84879090
Country of origin	EE

## Technical data

### Notes

General	Only use the screws provided to screw the components onto the corner inlays, the mounting pillars, and the housing.
General	To maintain the degree of protection, you must install suitable components with at least the same IP degree of protection in all openings.
General	Further information and detailed dimensions are available in the download area.
General	Mounting feet, mounting plates, and the mount for mast mounting are available as accessories, but are not supplied as standard.

### Product properties

Product type	Complete housing
Type	Opaque complete housing including mounting material
Housing type	outdoor housings
Ventilation openings present	no
Housing series	OCS
Battery compartment	no

### Dimensions

Width	204 mm
Height	223 mm
Depth	134 mm
Hole diameter	10 mm (Can be secured mechanically with the latch)

### Material specifications

Flammability rating according to UL 94	V2
Seal material	PUR
Insulating material	PC
Surface characteristics	untreated
Impact strength	IK10 (at -35°C ... +40°C)
Housing material	PC UV-stabilized

### Environmental and real-life conditions

#### Glow-wire test

Specification	IEC 60695-2-11:2014-02
Temperature	850 °C
Time of exposure	30 s

#### Degree of protection (IP code)

Specification	IEC 60529:2001-02
---------------	-------------------

#### Ambient conditions

Max. IP code to attain	IP69
------------------------	------

# OCS HP 080604 GY7035 - Electronic housing



1471770

<https://www.phoenixcontact.com/us/products/1471770>

Max. NEMA code to attain	6P
Impact strength	IK10 (at -35°C ... +40°C)
Ambient temperature (operation)	-40 °C ... 80 °C

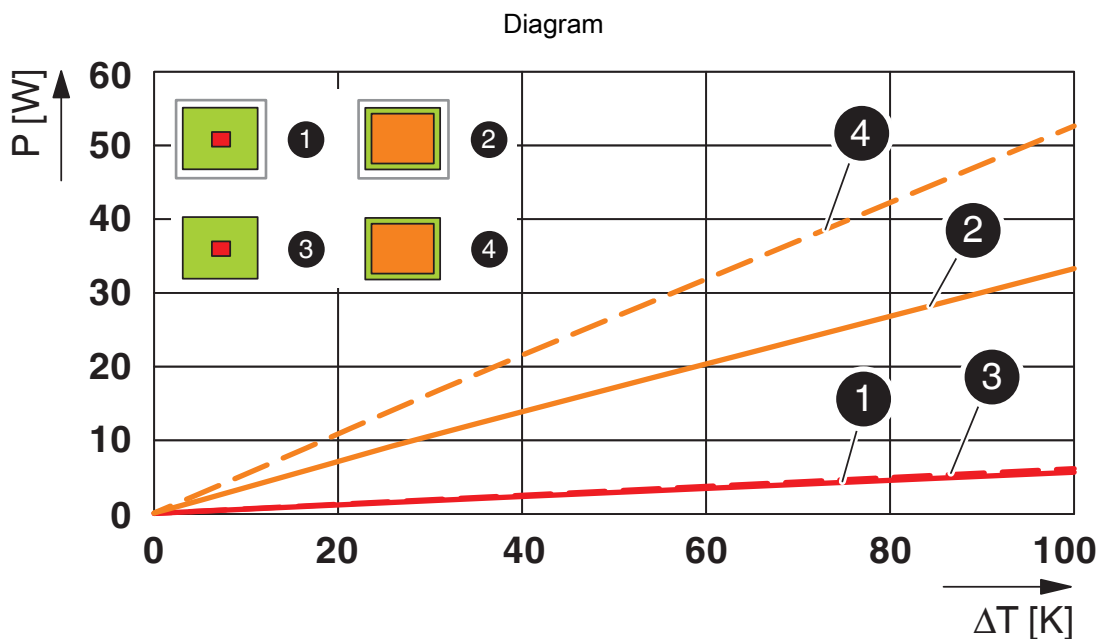
## Mounting

Mounting type	Mast mounting or wall mounting
Mounting position	any

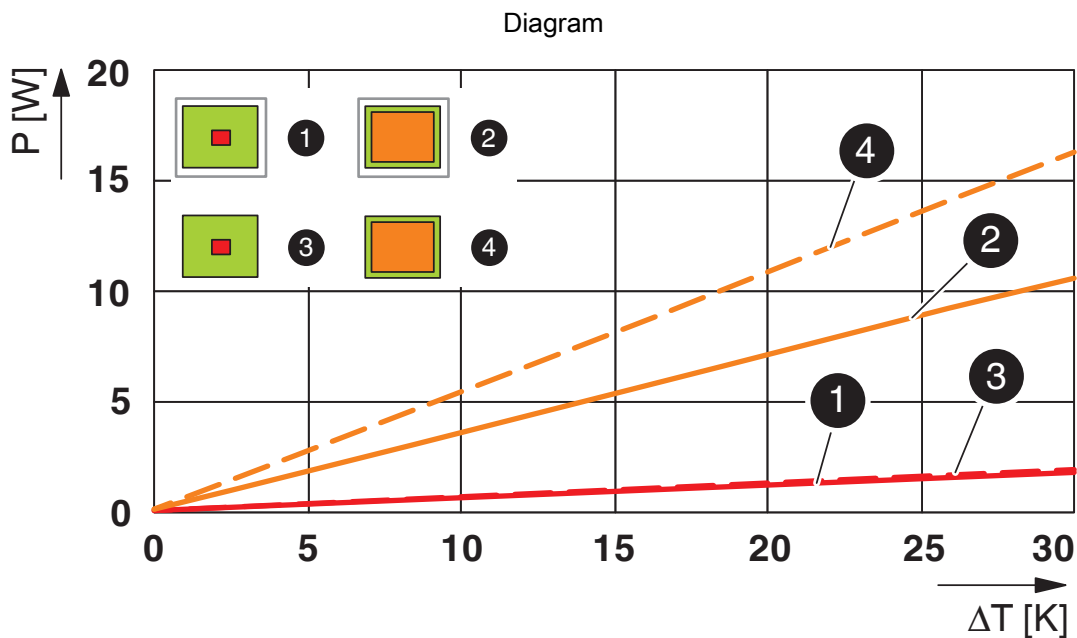
## Packaging specifications

Type of packaging	Box packaging
-------------------	---------------

Drawings



Power dissipation diagram for 0 K ... 100 K



Power dissipation diagram for 0 K ... 30 K

# OCS HP 080604 GY7035 - Electronic housing



1471770

<https://www.phoenixcontact.com/us/products/1471770>

## Approvals

To download certificates, visit the product detail page: <https://www.phoenixcontact.com/us/products/1471770>



**cULus Listed**

Approval ID: E255026-20221017

1471770

<https://www.phoenixcontact.com/us/products/1471770>

## Classifications

### ECLASS

ECLASS-11.0	27182702
ECLASS-13.0	27190103

### ETIM

ETIM 9.0	EC001031
----------	----------

# OCS HP 080604 GY7035 - Electronic housing



1471770

<https://www.phoenixcontact.com/us/products/1471770>

## Environmental product compliance

REACH SVHC

Lead 7439-92-1

# OCS HP 080604 GY7035 - Electronic housing



1471770

<https://www.phoenixcontact.com/us/products/1471770>

## Mandatory accessories

### OCS CORNER SET - Corner attachment

1471789

<https://www.phoenixcontact.com/us/products/1471789>

Corner mount, set of 4 pieces incl. screws for all housing sizes, material: PC-ABS, color: light gray



---

### OCS FOOT SET - Wall bracket

1471777

<https://www.phoenixcontact.com/us/products/1471777>

Mounting foot, set of 4 pieces incl. screws for all housing sizes, material: polycarbonate, color: light gray





# OCS HP 080604 GY7035 - Electronic housing



1471770

<https://www.phoenixcontact.com/us/products/1471770>

## OCS MOUNT 0806 SET - Wall bracket

1471778

<https://www.phoenixcontact.com/us/products/1471778>

Mounting plate, set of 2 pieces incl. screws for housing size of 8" x 6", material: polycarbonate, color: light gray



---

## OCS PANEL 0806 PC - Mounting panel

1471783

<https://www.phoenixcontact.com/us/products/1471783>

Mounting panel for housing size of 8" x 6", material: polycarbonate, color: white



# OCS HP 080604 GY7035 - Electronic housing



1471770

<https://www.phoenixcontact.com/us/products/1471770>

## OCS POLEFIX 0806 - Mounting material

1476923

<https://www.phoenixcontact.com/us/products/1476923>

Mount for mast  $\varnothing$  of 60 mm ... 140 mm, complete set for a housing of 8" x 6",  
material: steel



---

## Accessories

### OCS CORNER SCREW SET - Screw set

1521845

<https://www.phoenixcontact.com/us/products/1521845>

Mounting screw, set of 4 pcs., for securing mounting panel or PCB to corner  
inlay, flat-head PH1 slot, UNF 10-32 fine thread, length: 10 mm, material:  
stainless steel



# OCS HP 080604 GY7035 - Electronic housing



1471770

<https://www.phoenixcontact.com/us/products/1471770>

## SF-PHSL 2-100 S-VDE - Screwdriver

1212698

<https://www.phoenixcontact.com/us/products/1212698>



Screwdriver, positive/negative PH slot, VDE insulated, size: PH 2 x 100, 2-component grip, with non-slip grip

---

## SF-PH 2-100 - Screwdriver

1212560

<https://www.phoenixcontact.com/us/products/1212560>



Screwdriver, PH crosshead (lasered), uninsulated, size: PH 2 x 100, 2-component grip, with non-slip grip

# OCS HP 080604 GY7035 - Electronic housing



1471770

<https://www.phoenixcontact.com/us/products/1471770>

## A-INB-M12-69KN-P-LG - Pressure compensation element

1415222

<https://www.phoenixcontact.com/us/products/1415222>



Pressure compensation element, material for screw connection: PA, connecting thread: M12 x 1.5, color: light grey, with O-ring

---

## A-INL-M12-P-LG - Counter nut

1417659

<https://www.phoenixcontact.com/us/products/1417659>



Counter nut, for threads M12 x 1.5, color: light grey

# OCS HP 080604 GY7035 - Electronic housing



1471770

<https://www.phoenixcontact.com/us/products/1471770>

## WT-STEEL SH 4,6X150 - Cable tie

3240820

<https://www.phoenixcontact.com/us/products/3240820>



Cable binders, made from rust-free stainless steel (AISI 316), suitable for the harshest of ambient conditions (for example, salt water), with ball lock, for quick and secure bundling and fastening

---

## G-INS-M25-L68N-PNES-LG - Cable gland

1424472

<https://www.phoenixcontact.com/us/products/1424472>



Cable gland, material for screw connection: PA, external cable diameter 13 mm .  
.. 18 mm, shielding: no, connecting thread: M25 x 1.5, color: lightgrey RAL 7035

# OCS HP 080604 GY7035 - Electronic housing



1471770

<https://www.phoenixcontact.com/us/products/1471770>

## G-INS-M25-M68L-PEPDS-LG - Cable gland

1424516

<https://www.phoenixcontact.com/us/products/1424516>



Cable gland, material for screw connection: PA, external cable diameter 9 mm ...  
17 mm, shielding: no, connecting thread: M25 x 1.5, color: lightgrey RAL 7035

---

## A-INL-M25-P-LG - Counter nut

1417661

<https://www.phoenixcontact.com/us/products/1417661>



Counter nut, for threads M25 x 1.5, color: light grey

# OCS HP 080604 GY7035 - Electronic housing

1471770

<https://www.phoenixcontact.com/us/products/1471770>

## A-INSP-M25-68N-P-LG - Screw plug

1424520

<https://www.phoenixcontact.com/us/products/1424520>

Screw plug, material for screw connection: PA, connecting thread: M25 x 1.5, color: lightgrey RAL 7035, with O-ring



---

## G-INS-M40-M68N-PNES-LG - Cable gland

1417656

<https://www.phoenixcontact.com/us/products/1417656>

Cable gland, material for screw connection: PA, external cable diameter 19 mm .. 28 mm, shielding: no, connecting thread: M40 x 1.5, color: lightgrey RAL 7035



# OCS HP 080604 GY7035 - Electronic housing



1471770

<https://www.phoenixcontact.com/us/products/1471770>

## G-INB-M40-M68N-NEPDS-S - Cable gland

1415185

<https://www.phoenixcontact.com/us/products/1415185>



Cable gland, material for screw connection: Brass, nickel-plated, external cable diameter 16 mm ... 28 mm, shielding: no, connecting thread: M40 x 1.5, color: silver, with bend protection sleeve, with O-ring

---

## A-INL-M40-P-LG - Counter nut

1417664

<https://www.phoenixcontact.com/us/products/1417664>

Counter nut, for threads M40 x 1.5, color: light grey





# OCS HP 080604 GY7035 - Electronic housing



1471770

<https://www.phoenixcontact.com/us/products/1471770>

## A-INSP-M40-68N-P-LG - Screw plug

1424522

<https://www.phoenixcontact.com/us/products/1424522>

Screw plug, material for screw connection: PA, connecting thread: M40 x 1.5, color: lightgrey RAL 7035



---

## VS-08-A-RJ45/LP-1-IP67 - Panel mounting frames

1689446

<https://www.phoenixcontact.com/us/products/1689446>

RJ45 panel mounting frame, IP67, for PCB connection, for square panel cutout, with grommet, without mounting screws, color: gray



# OCS HP 080604 GY7035 - Electronic housing



1471770

<https://www.phoenixcontact.com/us/products/1471770>

## VS-08-SD-F-BK - Protective cover

1658066

<https://www.phoenixcontact.com/us/products/1658066>

Protective cover, IP67, flat design, to cover the contact insert in the panel mounting frame, color: black



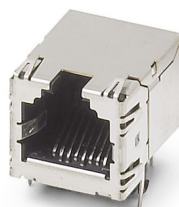
---

## VS-08-BU-RJ45-6/LH-1 - RJ45 PCB connectors

1653087

<https://www.phoenixcontact.com/us/products/1653087>

RJ45 PCB connectors, design: RJ45, degree of protection: IP20, number of positions: 8, 1 Gbps, CAT5 (IEC 11801:2002), material: Metal, connection method: THT wave, cable outlet: straight



# OCS HP 080604 GY7035 - Electronic housing

1471770

<https://www.phoenixcontact.com/us/products/1471770>

## CUC-V06-C1PGY-S/R4CE8:1 - RJ45 connector

1414383

<https://www.phoenixcontact.com/us/products/1414383>



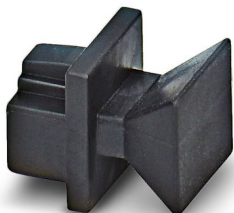
RJ45 connector, design: RJ45, degree of protection: IP67, number of positions: 8, 1 Gbps, CAT6, material: Plastic, connection method: Crimp connection, connection cross section: AWG 27- 24, cable outlet: straight, color: gray, Ethernet/PROFINET

---

## FL RJ45 PROTECT CAP - Dust protection

2832991

<https://www.phoenixcontact.com/us/products/2832991>



Dust protection caps for RJ45 socket

# OCS HP 080604 GY7035 - Electronic housing



1471770

<https://www.phoenixcontact.com/us/products/1471770>

## PRC 5-FT25-MC6-150 - Device connector, rear mounting

1409213

<https://www.phoenixcontact.com/us/products/1409213>



Device connector, rear mounting, Range of articles: PRC 35, housing material: PPE, color: black, number of positions: 5, max. conductor cross section: 6 mm<sup>2</sup>, rated voltage: 690 V AC, rated current: 35 A, Connection method: Crimp connection, Contact connection type: Pin, cable length: 150. This item is also available with other cable lengths. For your specific requirements, please contact your local PHOENIX CONTACT subsidiary.

---

## PRC COVER M - Protective cap

1409237

<https://www.phoenixcontact.com/us/products/1409237>



Protective cap, Range of articles: PRC 35, housing material: PPE, color: black, rated voltage: 1000. Suitable for connectors (MS)

# OCS HP 080604 GY7035 - Electronic housing



1471770

<https://www.phoenixcontact.com/us/products/1471770>

## PRC 5-FC-FS6 8-21 HR - Coupler connector

1017632

<https://www.phoenixcontact.com/us/products/1017632>



Coupler connector, Range of articles: PRC 35, design: Release with tool or by hand (see accessories), housing material: PPE, color: black, number of positions: 5, min. conductor cross section: 1.5 mm<sup>2</sup>, max. conductor cross section: 6 mm<sup>2</sup>, rated voltage: 690 V AC, rated current: 35 A, Connection method: Screw connection, Contact connection type: Socket, min. cable diameter: 8 mm, max. cable diameter: 21 mm. Variant for manual release

---

## FT NUT M25 GY - Nut

1049832

<https://www.phoenixcontact.com/us/products/1049832>



Nut, Range of articles: PRC 35, color: gray. NOTE: For indoor use only

# OCS HP 080604 GY7035 - Electronic housing

1471770

<https://www.phoenixcontact.com/us/products/1471770>

## PRC COVER F - Protective cap

1409236

<https://www.phoenixcontact.com/us/products/1409236>



Protective cap, Range of articles: PRC 35, housing material: PPE, color: black, rated voltage: 1000. Suitable for couplings (FS)

---

## SPT 5/ 5-H-7,5-ZB - PCB terminal block

1719228

<https://www.phoenixcontact.com/us/products/1719228>



PCB terminal block, nominal current: 41 A, rated voltage (III/2): 1000 V, nominal cross section: 6 mm<sup>2</sup>, number of potentials: 5, number of rows: 1, number of positions per row: 5, product range: SPT 5/..-H, pitch: 7.5 mm, connection method: Push-in spring connection, mounting: Wave soldering, conductor/PCB connection direction: 0 °, color: green, Pin layout: Zigzag pinning W, Solder pin [P]: 4.6 mm, number of solder pins per potential: 2, type of packaging: packed in cardboard

# OCS HP 080604 GY7035 - Electronic housing



1471770

<https://www.phoenixcontact.com/us/products/1471770>

## PV-FT-C4M-C-6-130-RD-00 - Device connector front mounting

1158451

<https://www.phoenixcontact.com/us/products/1158451>



Device connector front mounting, Range of articles: Sunclix, housing material: PPE, color: black, number of positions: 1, rated voltage: 1500 V DC, Connection method: Crimp, Contact connection type: Pin

---

## PV-FT-C4F-C-6-130-BU-00 - Device connector front mounting

1158448

<https://www.phoenixcontact.com/us/products/1158448>



Device connector front mounting, Range of articles: Sunclix, housing material: PPE, color: black, number of positions: 1, rated voltage: 1500 V DC, Connection method: Crimp, Contact connection type: Socket

# OCS HP 080604 GY7035 - Electronic housing

1471770

<https://www.phoenixcontact.com/us/products/1471770>

## SPT 5/ 1-H-7,5 - PCB terminal block

1719189

<https://www.phoenixcontact.com/us/products/1719189>



PCB terminal block, nominal current: 41 A, rated voltage (III/2): 630 V, nominal cross section: 6 mm<sup>2</sup>, number of potentials: 1, number of rows: 1, number of positions per row: 1, product range: SPT 5/..-H, pitch: 7.5 mm, connection method: Push-in spring connection, mounting: Wave soldering, conductor/PCB connection direction: 0 °, color: green, Pin layout: Linear pinning, Solder pin [P]: 4.6 mm, number of solder pins per potential: 2, type of packaging: packed in cardboard

---

## PV-C PROTECTION CAP - Protective cap

1785430

<https://www.phoenixcontact.com/us/products/1785430>



Protective cap, Range of articles: Sunclix, color: black. self-sealing, without interlock, set consisting of: 1 protective cap for connector side and 1 protective cap for coupling side



# OCS HP 080604 GY7035 - Electronic housing

1471770

<https://www.phoenixcontact.com/us/products/1471770>



## PV-FT-C COLLAR NUT BK - Screw connection

1083475

<https://www.phoenixcontact.com/us/products/1083475>



Screw connection, Range of articles: Sunclix

---

## TOOL-KIT SOLAR - Tool set

1212071

<https://www.phoenixcontact.com/us/products/1212071>



**Tool case**, equipped with: crimping pliers, pressing dies for MC3, MC4 and SOLARLOK connectors, stripping tool for commercially available solar cables, stripping tool for SUNCLIX, VDE cable cutter, VDE screwdriver: PH1, PH2, 0.6x3.5 and 0.8x4.0 slots.

---

Phoenix Contact 2023 © - all rights reserved  
<https://www.phoenixcontact.com>

Phoenix Contact USA  
586 Fulling Mill Road  
Middletown, PA 17057, United States  
(+717) 944-1300  
[info@phoenixcon.com](mailto:info@phoenixcon.com)