

# SAC-4P-MINMS FF-TR VA Male Terminator

Mini 7/8-in. Male Terminator for Foundation Fieldbus and PROFIBUS PA Networks



## PLUSCON

Data Sheet  
2567\_en\_A



© PHOENIX CONTACT - 05/2008

### 1 Description

The SAC-4P-MINMS FF-TR VA terminator provides the correct termination resistance and capacitance at the end of each trunk segment in a Foundation Fieldbus or PROFIBUS PA network.

Using a stainless steel 7/8"-16UNF connector, the terminator attaches to the end of each segment along the trunk. The stainless steel coupling nut provides corrosion resistance and, along with the PUR housing, an IP67 rating.

### 2 Features

- Meets Foundation Fieldbus and PROFIBUS PA cable requirements so there is no drop-off in signal quality at the connectors
- Heavy-duty molded construction and stainless steel connector nut provides corrosion resistance
- IP67 rating for use in harsh, industrial environments
- Sunlight resistant for external use
- RoHS-compliant



Make sure you always use the latest documentation.  
It can be downloaded at [www.download.phoenixcontact.com](http://www.download.phoenixcontact.com).  
A conversion table is available on the Internet at  
[www.download.phoenixcontact.com/general/7000\\_en\\_00.pdf](http://www.download.phoenixcontact.com/general/7000_en_00.pdf).



This data sheet is valid for all products listed on the following page:

### 3 Ordering Data

#### Products

Description	Type	Order No.	Pcs./Pkt
Terminator, 4-pos. 7/8-in. connector, for use in Foundation Fieldbus or PROFIBUS PA	SAC-4P-MINMS FF-TR VA	1430023	1

### 4 Technical Data

#### Electrical Data

Rated current	5.2 A
Rated voltage	50 V
Overvoltage category	II according to DIN VDE 0110
Contact resistance	< 5 mΩ
Number of poles	4

#### General Data

Housing material	TPU
Overmold material	PUR
Overmold color	Black
Coupling nut material	Stainless steel
Coupling nut thread size	7/8"-16UNF
Contact material	Gold plated over brass
Operating temperature	-40 to 80°C

#### Approvals/Conformance

RoHS-compliant	Yes
Environmental	IP67 NEMA 1, 3, 4, 6P

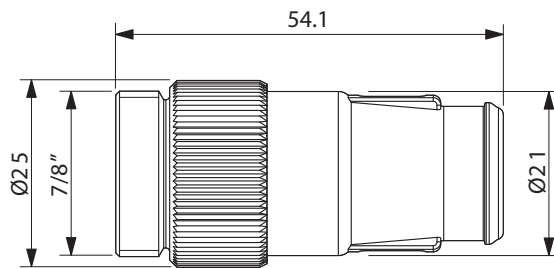


Figure 1 Dimensions

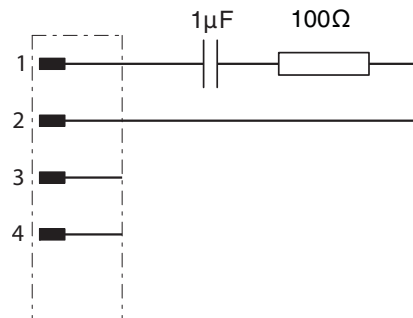


Figure 2 Function diagram